



BUILDER	Oceanco
LOA	85.47m / 280'5"
BEAM	13.80m / 45'3"
DRAFT	3.95m / 12'12"
YEAR	2010 / 2018
SPEED	15 knots cruising
ACCOM	12 guests in 9 cabins (MCA) 22 guests in 9 cabins (Private Operation)
CREW	up to 30
GT	2,867
PRICE	€ 129,000,000

SUN RAYS

SUNRAYS



SUNRAYS



SUNRAYS



SUNRAYS



SUNRAYS



SUNRAYS



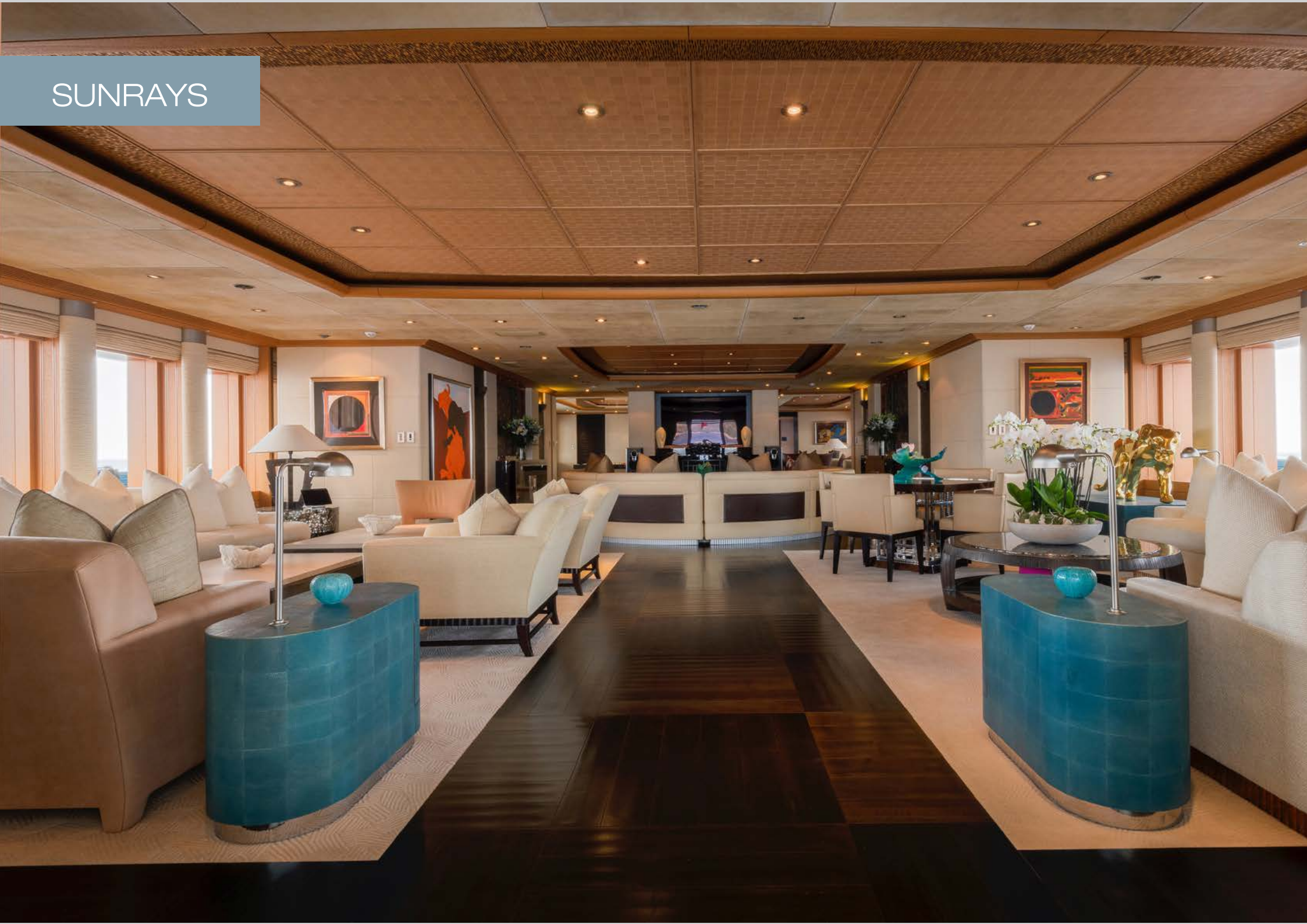
SUNRAYS



SUNRAYS



SUNRAYS



SUNRAYS



SUNRAYS



SUNRAYS



SUNRAYS



SUNRAYS



SUN RAYS



SUNRAYS



SUNRAYS



SUNRAYS



SUNRAYS



SUNRAYS



SUNRAYS



SUNRAYS



SUNRAYS



SUNRAYS



SUNRAYS



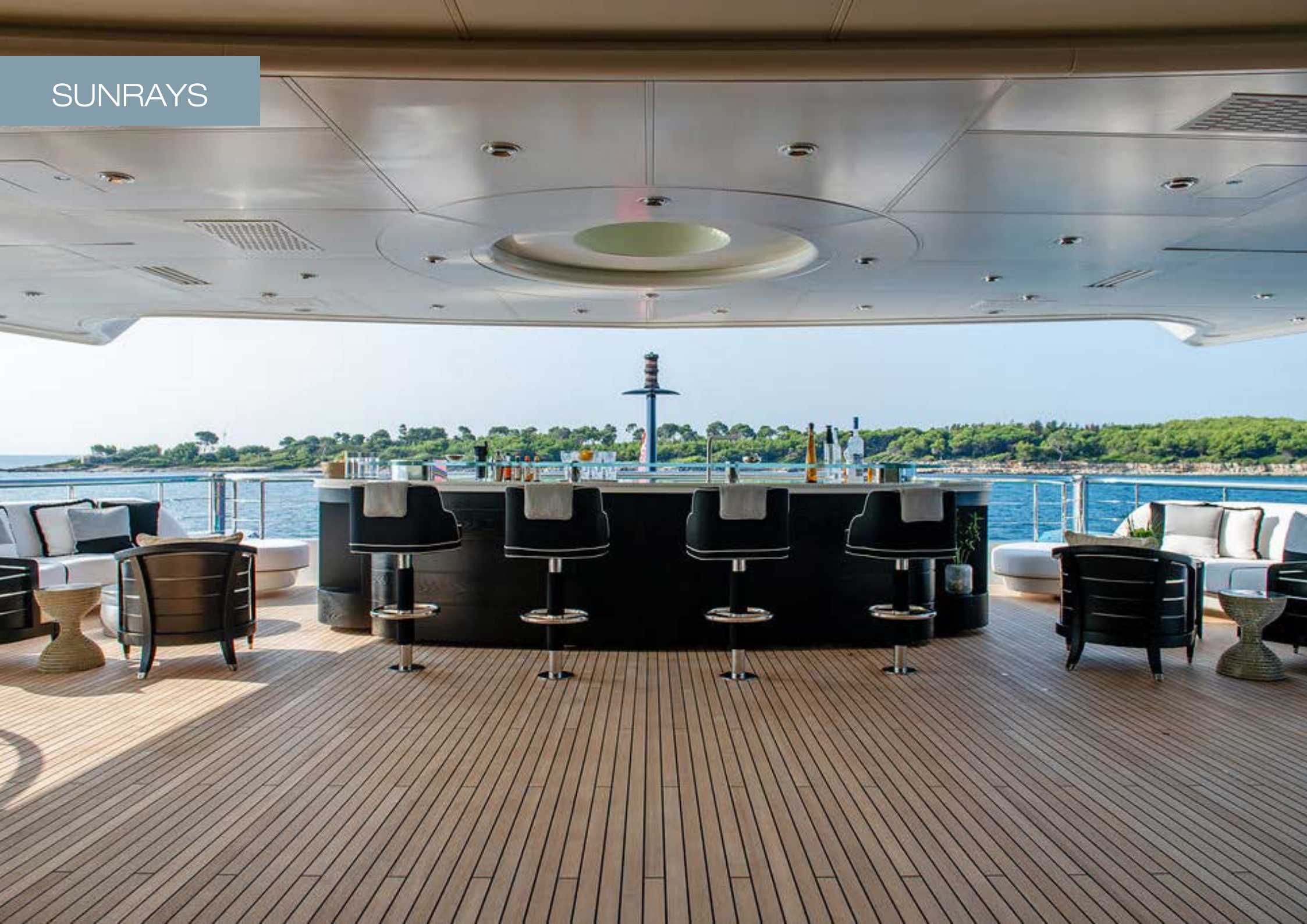
SUNRAYS



SUNRAYS



SUN RAYS



SUNRAYS



SUNRAYS



SUNRAYS



SUNRAYS



SUNRAYS



SUNRAYS



SUNRAYS



SUNRAYS



SUNRAYS



SUNRAYS



SUNRAYS



SUNRAYS



SUNRAYS



SUNRAYS



SUNRAYS



SUNRAYS



SUNRAYS



SUNRAYS



SUNRAYS



SUNRAYS



SUNRAYS



SUNRAYS



SUNRAYS



SUNRAYS



SUNRAYS



SUNRAYS



SUNRAYS



SUNRAYS



SUNRAYS



SUNRAYS



SUNRAYS



SUNRAYS



SUNRAYS



SUNRAYS



SUNRAYS



SUNRAYS



SUNRAYS



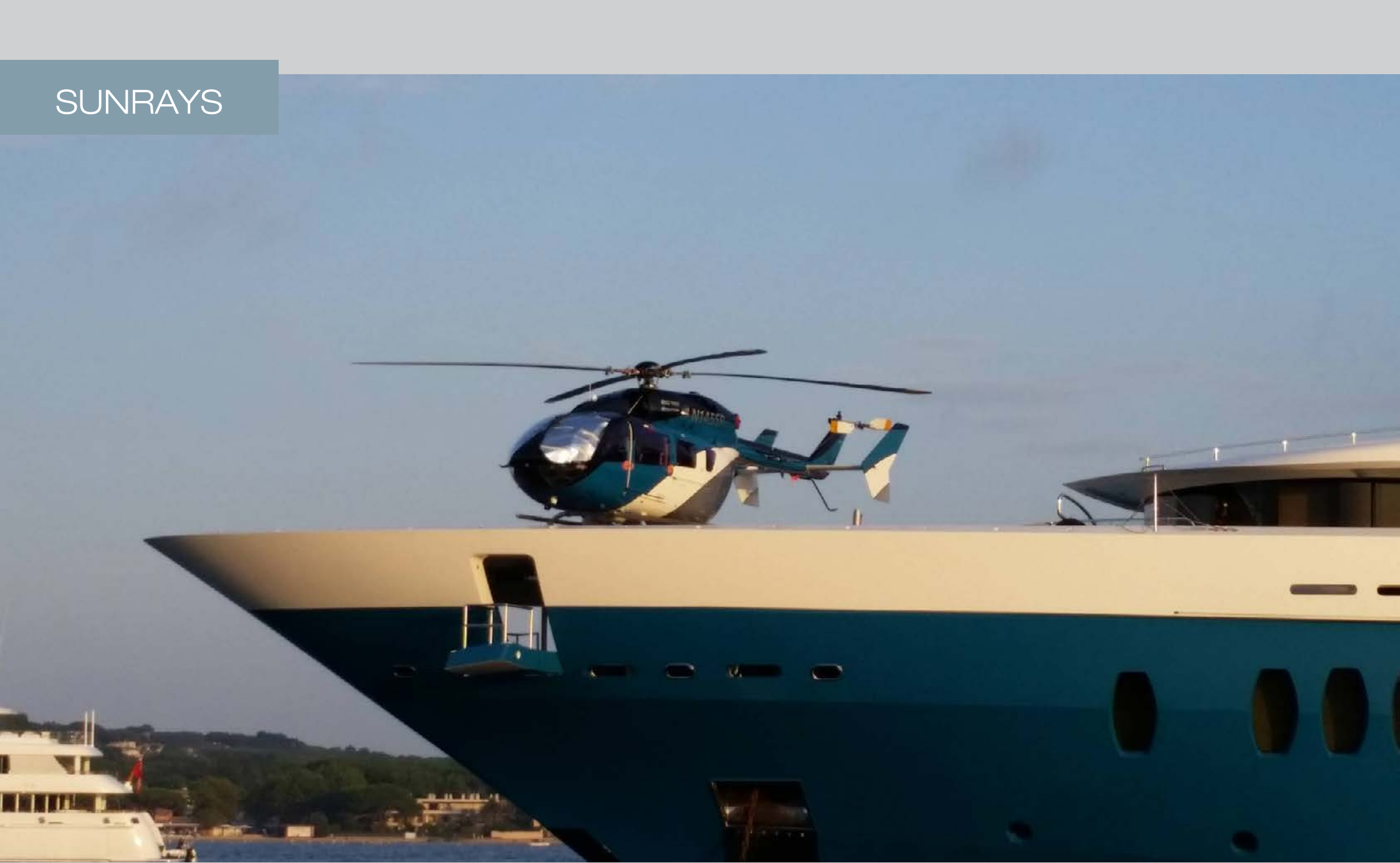
SUNRAYS



SUNRAYS



SUNRAYS



SUNRAYS



SUNRAYS



SUNRAYS



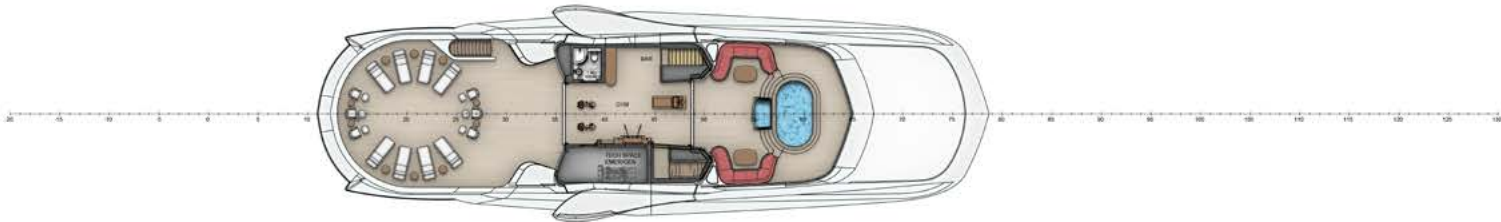
SUNRAYS



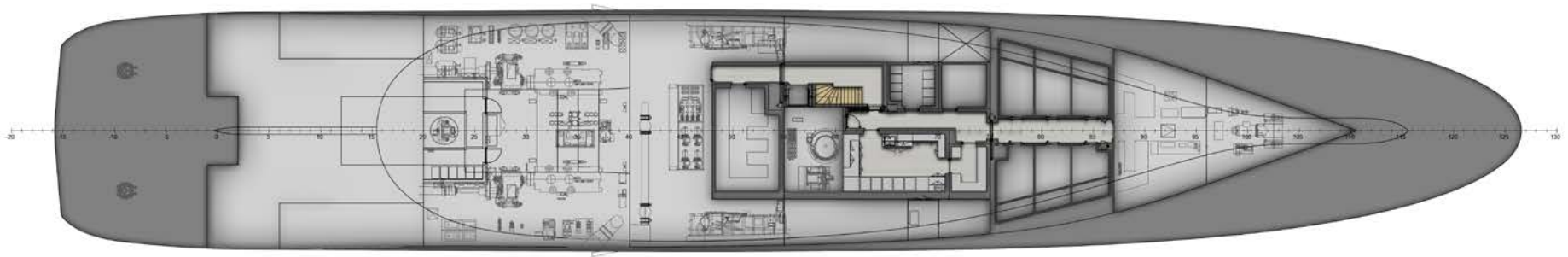
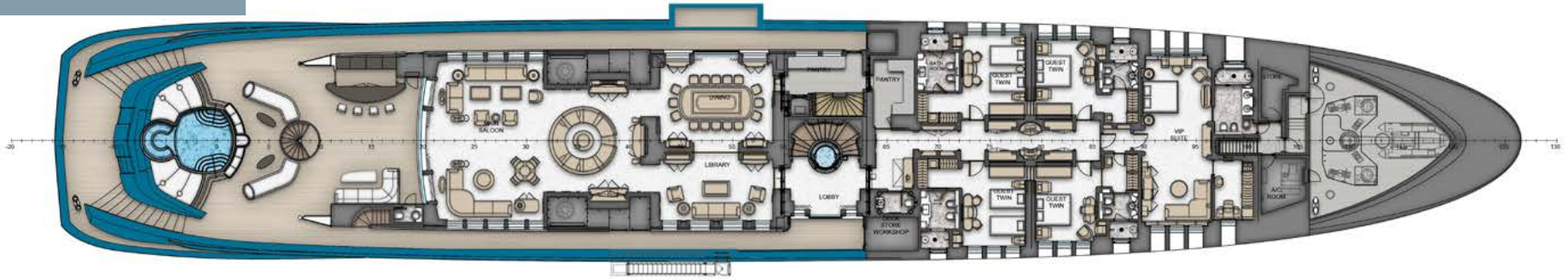
SUNRAYS



SUNRAYS



SUNRAYS





SUNRAYS

SUNRAYS

CONTENTS

1. MAIN CHARACTERISTICS
2. DIMENSIONS
3. SPEED & RANGE UNDER POWER
4. CAPACITIES
5. ACCOMMODATION
6. MECHANICAL EQUIPMENT
7. DECK EQUIPMENT
8. NAVIGATIONAL EQUIPMENT
9. COMMUNICATION EQUIPMENT
10. ENTERTAINMENT EQUIPMENT
11. GALLEY & LAUNDRY EQUIPMENT
12. SECURITY & SAFETY EQUIPMENT
13. TENDERS & WATERSPORT EQUIPMENT
14. COMMENTS
15. MAINTENANCE NOTES

SUNRAYS

1. MAIN CHARACTERISTICS

TYPE	Displacement Motor Yacht
HULL NO.	Y705
HELIPAD	1 x Reinforced area for maximum 5,000 kg on aft sun deck with a max. take-off weight of 2,910kg Suitable for EC145
BUILDER	Oceanco, The Netherlands
NAVAL ARCHITECT	Azure Naval Architects
EXTERIOR DESIGN	Bjorn Johansson
INTERIOR DESIGN	Terence Disdale
YEAR	2010
REFIT	2018
CLASSIFICATION	Lloyds register +100 A1 SSC Yacht (P) MONO G6 +LMC UMS, MCA LY2
CONSTRUCTION	Steel hull Aluminium superstructure Burma teak decks of 20 mm
FLAG	Cayman Islands
ENGINES	2 x 4,680 Hp MTU 16V595 TE70 Diesel
GT	2867
NT	860
HULL COLOUR	Teal Blue - Awlgrip

2. DIMENSIONS

LOA	85.47m / 280'5"
LWL	74.85m / 245'7"
BEAM	13.80m / 45'3"
DRAFT	3.95m / 12'12" full load

3. SPEED & RANGE UNDER POWER

MAXIMUM SPEED	18.5 knots at half load and at MCR
CRUISING SPEED	15 knots
ECONOMICAL SPEED	13 knots
RANGE	6,000nm @ 12 knots
FUEL CONSUMPTION	740 litres / hour

4. CAPACITIES

ACCOMMODATION	12 x Guests in 9 Cabins (MCA, Commercial yacht rules) 6 x Double, 2 x Twin, 1 x Convertible (4 x Pullman, 7 x King, 4 x Single) 22 x Guests for private yacht use
CREW	Up to 30 x Crew including the Captain: 3 x 3 Berth Cabins (9) (Restricted to 2 Berth under Commercial Operation) 2 x 1 Berth Cabins (2) 8 x 2 Berth Cabins (16) 1 x 2 Berth Staff Cabin (2) 1 x 1 Berth Captain's Cabin (1)
FUEL	287,600 litres / 75,976 US gallons
FRESH WATER	149,100 litres / 39,388 US gallons (incl. pool & Jacuzzi)
FRESH WATER TRIM TANK	26,800 litres / 7,079 US gallons
JET FUEL A1 -HELICOPTER	2,300 litres / 607 US gallons
PETROL TENDERS	2,300 litres / 607 US gallons
LUBE OIL	6,200 litres / 1,637 US gallons
DIRTY OIL	3,800 litres / 1,003 US gallons
GREY WATER	10,000 litres / 2,641 US gallons
BLACK WATER	13,500 litres / 3,566 US gallons
BILGE WATER	19,700 litres / 5,204 US gallons

5. ACCOMMODATION

OWNER & GUESTS

- 1 x Owners Suite on Owner's Deck with separate dressing room, bath and shower room en suite, private outside deck with jacuzzi pool.
- 1 x VIP Suite on Owner's Deck - with shower room en suite, fold-out balcony.
- 1 x VIP Suite on Main Deck with dressing room, bath and shower room en suite
- 1 x VIP Suite on Crew Deck with ensuite
- 4 x Guest suites on Main Deck (2 x double and 2 x twin)
- The Study converts to a cabin with double sofa-bed, shower room en suite and fold-out balcony

MAIN DECK

The main deck holds a VIP cabin and four guest cabins which connect to each other.

The large dining room can be converted into a video conference room with the optional use of the adjacent library.

The standard foldable exterior bulwark assures guests an unrestricted view while dinner is served. Aft of the sleeping accommodation is a full beam lounge.

OWNER'S DECK

The Master suite is located on the upper deck, which is totally dedicated to her owner. The suite includes en-suite his & hers bathrooms and dressings, a private full beam lounge, a study room and a VIP cabin.

Both rooms have foldable sea balconies and can also be connected with the Master suite, thus serving as one living area. In addition, the owner's exterior foredeck hosts a whirlpool and sunbathing area.

On the spacious aft deck two round tables can convert into one very large oval dining table for up to 22 guests.

BRIDGE DECK

The bridge deck features a spa and lounge with bamboo finishing. The owners' input is evident in the layout of the spa lounge which can also be converted into a movie theatre. A Jacuzzi and bar can be found on the aft deck.

SUNDECK

On the sun deck a semi enclosed air-conditioned area separates the forward spa area from the aft sun-bed lounge deck. This area includes a gym (loose weights, yoga mats, Technogym bike and tread mill etc)

LOWER DECK

Beach suite double cabin, shower room en suite, and fold down balcony for water level tender access.

6. MECHANICAL EQUIPMENT

ENGINES

2 x MTU 16V595 TE70 Diesel
2 x 4,680 Hp / 3,492kW

ENGINE HOURS

ME – Port: 11,893 (March 2019)
ME – Stbd: 11,927 (March 2019)

EXHAUST SYSTEM

Marquip supercharging - Two stage
MTU sequential turbo charging system

SHAFTS

Rubber Design type RD-250-OL.S.TL.C

PROPELLERS

2 x Wärtsila five 5-blades each rotating
inboard; manufactured to ISO 484/2

Class 1

GEARBOX

Reintjes type WAF 2355

REDUCTION RATIO

5.454 : 1

STEERING SYSTEM

Rolls Royce Marine AS Tenfjord,
SR 622-FCP electro hydraulic

SUNRAYS

STABILISERS

2 x Retractable fin stabilisers at anchor
make Rolls Royce Power Engineering

BOWTHRUSTER

300 kW Jastram type BU50F, electric,
w/ 5 blade fix pitch propeller

STERN THRUSTER

Veth VL 200 - 250 kW retractable,
rotatable with 5 bladed marine bronze
NiAl fixed pitch in nozzle propeller

ELECTRICITY

3-Phase, 4 wire, 400/230V, 50Hz
230V, 50Hz (lighting+emergency
lighting), small galley equip. sockets
nav equip.
400 V, 50 Hz, 10 kW for electr. doors
24 V DC (Alarm, nav & radio equipment,
light)

GENERATORS

3 x 332kW /386 kVA make
Stamford HCM 534 FZ
Engine: MTU/DDC Series 2000, 8V2000
M50A diesel

EMERGENCY GENERATOR

1 x 120kW / 125kVA make
Newage Stamford UCM 274 F13
Engine: 120kW / 150kVA Volvo Penta
D7A TADiesel

GENERATOR HOURS

As of March 2019
Gen – Port: 42,665
Gen – Centre: 40,600
Gen – Stbd: 42,936

BATTERIES BANKS

1 x Radio batteries
1 x 24V
3 x Main generators
1 x 24V, starter for emergency generator
1x Dry start as secondary for emergency
generator
ME Air-in-cylinder starting system

BATTERY CHARGERS

1 x Radio charger
1 x General service charger
1 x Starter battery charger
Each generator has its own charger

SHORE POWER

3 x 400V – 50Hz
3 x 415V - 50 Hz

CONVERTERS

2 x Clean Net Converter
Manufacturer – Mapart Type – S97

HYDRAULIC SYSTEM

Each hydraulic consumer has its own
hydraulic power pack

OIL / WATER SEPARATOR

WO Marine water Technology
Type - UltraPur OWS SKIT S-DEB 1.5
Alfa Laval PU 150 II – 2,200 l/h approx

FUEL / OIL SEPARATOR

AIR CONDITIONING

Heinen & Hopman
Type- CSH7551-70Y-35P/AC250-202DQ
4 x Refridgerant circuits of 407C charge
each circuit approx 45kg Chiller unit

WATER MAKER

2 x HEM, type 40/4800 reverse osmosis
desalination systems, each with a
capacity of approx. 22,000 litres per
24 hours in 1 x RO-unit
HEM 40 Duplex Serial number - RGS
71615/ROS:71616

HOT WATER BOILERS

3 x SPIS 500 calorifiers make Nibe
Capacity: 500 litres each

TOILET SYSTEM

Vacuum

SEWAGE SYSTEM

Hamann, type C45 chemical treatment
plant - capacity of 12150 litres per day

BILGE WATER SEPARATOR

1 x RWO Rossmark Fully automatic type
UltraPur OWS S-DEB 1,5, capacity
1.5m3/hour]

BOMBAS AZQUE PUMPS

1 x E-driven self-priming fuel oil pump
 2 x E-driven self-priming fuel oil booster pumps
 1 x E-driven self-priming refuelling pump tenders
 1 x Electric driven oil transfer pump
 1 x Air-driven membrane type Dirty Oil / Sludge / Oily Bilge pump
 1 x Unit w/ 3 electrically driven self-priming entrifugal fresh water pumps
 1 x Deck wash pump, electrically driven self-priming Centrifugal
 1 x Electrically driven self-priming centrifugal pool filling pump
 3 x Cold and 3 hot water circulating pumps
 2 x Grey water pumps electrically driven self-priming mono pumps
 2 x Discharge pumps electrically driven self-priming mono pumps

7. NAVIGATIONAL EQUIPMENT

EQUIPMENT BRANDS

NAVIGATIONAL BRIDGE

Raytheon, Radio Holland
 Manoeuvre and managing controls as bow / stern, main engine remote, steering - controls are all executed in the same design
 S-Band radar
 X-Band radar
 4 x 23,1" TFT screens for CCTV, TV slave from office, Yachts managing and control system connected to display control system

NAVIGATIONAL BRIDGE

DISPLAYS

3 x 23,1" TFT screens (centre) working as a Stand-alone integrated Raytheon Navigation System, for ECDIS/conning and autopilot
 7 x Sets 23" TFT Console Monitors (bridge)
 2 x Sets 17" TFT Bridge Wing Displays (wings)
 2 x DGPS navigator Debeg 4422D
 1 x Uais Debeg 3400AIS
 2 x NMEA NAV data distribution box Debeg 9510
 1 x Magnetic compass
 1 x Anschütz Standard 22 GG/GGM twin set
 1 x Anschütz repeater compass (wheelhouse)
 1 x Anschütz repeater compass (steering room)
 1 x NautoPilot 2015 Subsystem
 1 x Rudder angle indication
 1 x Debeg 4630 Navigation echo sounder
 1 x Consilium R1 log
 1 x Debeg 3200 Ship Security Alert System
 1 x Weather instruments
 3 x Portable GMDSS VHF radio SP3300
 1 x Satellite Debeg 3545
 1 x Airband VHF
 Sirehna
 Debeg 2902 (according MSC.148)
 OMC
 Saab

GMDSS

EPIRB

DYNAMIC POSITIONNG

NAVTEX

WIND INSTRUMENTS

AIS

8. COMMUNICATION EQUIPMENT

EQUIPMENT BRANDS	SAM Electronics, Alphanon, Radio Holland, Sperry Marine
SATCOM	2 x INM-C Satcom Terminal Debeg 3220C 2 x INM Mini M SatCom System 2 x INM F77 SatCom System Seatel type 4006
SSB	1 x Radio Debeg 3105, 150W
WIFI	Strix System, type WM11G-EU, with a 54MB/s speed.
VHF	2 x Debeg RT 5022, (= Sailor 5000) 4 x Debeg 6301 (= Sailor 4800)
GSM	5 x Dual band GSM for voice/fax/data, each
TELEPHONE EXCHANGE	PBAX main unit with 75 lines (incl. 16 trunk lines) and connected to onshore cables, public announcement systems, satellite communication system and GSM systems 1 x DECT Phone Network covering all interior and exterior areas of the yacht 1 x Public Announcing System from one central area (Wheelhouse) or via selected phones via the PBAX to three different zones (crew, guests & Owners) Steward call system
COMPUTERS & PRINTERS	Onboard computer network with various workstations Yacht computer system (LAN) is based upon a fibre optic network PC and monitor in the 2 offices, ECR

LOUDHAILER

SHIP'S BELL FAX

1 x Kahlenberg four tone electric pneumatic
1 x Bronze chrome plate ship's bell
Fax connections in captain's office, owners office, internet area, hotel managers office & ECR

9. DECK EQUIPMENT

ANCHOR WINDLASSES AFT WARPING CAPSTAINS

2 x Steen type 23 - Port & SB, electric
4 x Steen type 59 9; 2 on fore deck; 2 on on aft deck

ANCHOR

2 x 985kg Wortelboer HHP type Pool N galvanised steel stud link – on bow
2 x 220m high tensile steel stud link galvanised chains on bow

ANCHOR CHAINS

1 x Van Driel hydraulic boom on PS of crew entrance with max. reach of 1.5m inboard and 1.8m outboard
1 x Atlas service crane for life rafts (owner's supply)

BOAT CRANE & DAVITS

2 x Sets of liding davits PS / SB in tender garage with SWL of 4,000kg each
1 x 4.00m Staalart/Hydromae electro hydraulic in aluminium & teak with illumination and connection to PBAX system

PASSERELLE

SWIMMING LADDERS

1 x Removable composite – loading area
1 x Removable composite mountable on each side of the tender garage

BOARDING LADDER

1 x Marquipt (or equivalent) self-levelling manual ladder type Sea-Stair

SUNRAYS

SEARCHLIGHT

2 x Xenon on main mast, type ACR-RCL600A, complete with remote controls in wheel-house

JACUZZI

Aquademi
All with Fresh water, heating, underwater lights
1 x Jacuzzi on owner's deck forward on of owners suite
1 x Jacuzzi on bridge deck aft
1 x Oval Jacuzzi - Sundeck with
1 x Skylight on stbd side

POOL FILLING SYSTEM

1 x Pool filling pump

ELEVATOR / LIFT

1 x TBV (Industry & Offshore BV) circular four stage hydraulic operated 4-person lift – max capacity 450kg
1 x Storage lift, electric w/ max of 375kg capacity

HELICOPTER LANDING AREA

Dedicated reinforced area for a maximum weight of 5000 kg on aft sun deck with a max. take-off weight of 2,910kg & "D" measurement of 12.19m
1 x Jet A1 refuelling systems

HELICOPTER CRASH BOX

Various Safety Equipment

AWNINGS

1 x Removable fabric awing on the forward side of approx. 75 m2 with Tencara T40 fabric
1 x Removable fabric awning of approx. 8 m2 with Tencara T40 on the aft side

AWNING

1 x Removable fabric sun awning

DECK WASH SYSTEM

1 x Deck wash pump system

10. ENTERTAINMENT EQUIPMENT

GENERAL

- Van Bergen Henegouwen System

ALL CABINS

- HD LED Sony with widescreen TV
- AquaVision televisions in all bathrooms
- Some of the larger cabins with separate areas have more TVs.
- Dedicated entertainment systems controlled by Crestron including:
 - o Cable TV Box i.e. SKY television in Europe
 - o Kaleidescape Movie, TV Show and Music player
 - o 1800 movies and TV series
 - o Apple TV
 - o iPod docking station
 - o YachtEye tracking system to view Sunrays' current position, menus and information on the surrounding areas
 - o Access to Global Entertainment – view or listen to the current movie and music currently playing throughout Sunrays
- All of these systems are controlled using an iPad, one for each cabin
- From the iPads heating, lighting and window blind systems are controlled
- Steward Call function on the iPad

LIVING AREAS

- Every public guest area has the same equipment
- The master salon has a play-station 4
- All of the guest areas have access to global sources, meaning that the same movie or music can be playing throughout the vessel
- The Aft decks have televisions that lower from the deck heads and rotate to face wherever the guest is situated
- On the pool deck and music deck we have a brand new Meyer Sound system, with integrated sub-woofers
- The pool deck also comes with coloured programmable LED lighting in the deck heads and the pool
- All Aft decks have iPads for control

SUNRAYS

MUSIC & SKY DECK

The Music and Sky Deck has a fully integrated Disco system with DMX lighting; consisting of a Pioneer mixing desk, moving Martin lights, smoke machine and a disco ball. This can be isolated to either deck as well as having the disco across both floors. The music from the mixing desk can also be distributed around the entire vessel, inside and out, so that it is heard everywhere.

ADDITIONAL DECK FACILITIES

- Gym
- Spa salon with steam room & 2 x spa therapists
- Elevator
- Fold-out balconies in the Beach Suite Terrace
- Music deck DJ & speaker system on top 2 decks
- DMX lighting and top range sound system by the main pool
- Heli deck/disco
- Billiards room with gyroscopic pool table
- Tee- It golf system
- Video conference room
- Piano
- Al fresco dining for 22
- 3 x Jacuzzis
- 1 x large jacuzzi/pool
- At anchor stabilisers
- Large screen TV (105 inches) in the master lounge
- Sony PS4 & Nintendo Wii

11. GALLEY & LAUNDRY EQUIPMENT

Galley equipment by Moeleker

GALLEY

- 1 x Ceramic cooking isle with 4 zones with 4 kW with pot detection

- 1 x Induction cooking isle with 4 zones of 3.5kW with pot detection
- 1 x Warming oven with roll door 800mm
- 2 x Fryers of 9kW each
- 1 x Griddle plate
- 1 x Steam oven, combi-duo lower part 10x1/1 gastronorm and on top a
- 6 x 1/1 Gastronorm both with computer controlled program
- 1 x Dishwasher with built in soap dosing unit
- 1 x Dishwasher
- 1 x Ice cube maker
- 1 x Microwave
- 1 x Trash compactor
- 1 x Refrigerator work bank with 4 doors; 1/1gastronorm
- 1 x Refrigerator 2/1 gastronorm
- 1 x Freezer 2/1 gastronorm
- 2 x Sinks
- 2 x Waste disposer including air pressure on/off switch
- 1 x Salamander, useable space 545x375
- 1 x Overhead warmer
- 1 x Hood

INTERIOR BAR SUN DECK

- 1 x Ice cube maker
- 1 x Refrigerator
- 1 x Sink
- 1 x Microwave
- 1 x Small coffee/tea machine

BRIDGE DECK PANTRY

- 1 x Ice cube maker
- 1 x Dish washer
- 1 x Espresso coffee machine 2 cups
- 1 x Sink

SUNRAYS

EXTERIOR BAR SB SIDE BRIDGE DECK

- 1 x Refrigerator
- 1 x Ice-cube maker
- 1 x Sink

PANTRY - OWNERS DECK

- 1 x Cooker with 2 hobs induction
- 1 x Sink
- 1 x Coffee/tea machine
- 1 x Microwave
- 1 x Refrigerator
- 1 x Dishwasher

INTERIOR BAR OWNERS LOUNGE

- 1 x Sink
- 1 x Refrigerator
- 1 x Ice cube maker
- 1 x Wine chiller, located inside bar store

EXTERIOR BUFFET COUNTER OWNERS DECK PS AFT

- 1 x Refrigerator
- 1 x Ice-cube maker

PANTRY OWNERS DECK (CREW STAIR CASE)

- 1 x Ice cube maker
- 1 x Dishwasher
- 1 x Refrigerator
- 1 x Espresso coffee machine 2 cups
- 1 x Sink

PANTRY MAIN DECK(CREW STAIR CASE)

- 1 x Ice cube maker
- 1 x Dishwasher
- 1 x Refrigerator

- 1 x Espresso coffee machine 2 cups
- 1 x Microwave
- 1 x Sink

INTERIOR BAR MAIN SALOON

- 1 x Refrigerator
- 1 x Ice-cube maker

EXTERIOR BARS MAIN DECK PS AFT

- 1 x Refrigerator
- 1 x Double sink
- 1 x Dishwasher
- 1 x Microwave

EXTERIOR BARS MAIN DECK SB AFT

- 1 x Sink
- 1 x Ice cube maker
- 1 x Refrigerator
- 1 x Coffee / tea machine

EXTERIOR COOKING AREA MAIN DECK PS AFT

- 1 x Barbecue
- 1 x Grill
- 1 x Pizza
- 1 x Teppanyaki grill
- 1 x Deep fryer

CREW MESS

- 1 x Regular coffee machine
- 2 x Refrigerators
- 1 x Microwave
- 1 x Dishwasher
- 1 x Sink

MESS CREW DECK

- 1 x Refrigerator
- 1 x Ice cube maker

INTERIOR AREA TENDER GARAGE CREW DECK CENTRE

- 1 x Dishwasher
- 1 x Refrigerator
- 1 x Ice cube maker
- 1 x Coffee/tea machine
- 1 x Sink

OTHER REFRIGERATION

- 3 x Refrigerating compartments
- 3 x Freezing compartment
- 1 x Garbage freezing store

LAUNDRY

- 5 x Miele washing machines, type PW 6065 LP ED EL
- 5 x Miele dryers, type PT 7136 ED EL
- 1 x Ironer (rotary type)
- 1 x Steam iron with separate board

OTHER REFRIGERATION

- 3 x Refrigerating compartments - Heinen & Hopman
- 3 x Freezing compartment - Heinen & Hopman
- 1 x Garbage freezing store

12. SECURITY & SAFETY EQUIPMENT

CCTV

- CCTV system is connect to the Yachts LAN controlled from crew mess PC, bridge & bridge wings via 4 x cameras

CAMERA LOCATIONS:

- 1 x PTZ camera Main mast
- 1 x Fixed camera Fore mast
- 1 x PTZ camera Main deck aft
- 1 x Fixed camera Main deck passage way PS
- 1 x Fixed camera Main deck passage way SB
- 2 x Fixed cameras lower engine room PS & SB
- 2 x Fixed cameras Engine room for & aft
- 2 x Fixed cameras in each generator room
- 2 x Fixed cameras tender garage PS & SB fwd
- 1 x PTZ camera Wheelhouse
- 1 x PTZ camera Tender doors

SECURITY

- General alarm system in accordance to Class
- Intruder alarm monitored and alarmed via the AMC system

SAFETY

- 1 x Rescue boat Zodiac type Riibo 420 with
- 1 outboard 40 Hp engine on the fore deck – with dedicated telescopic fore deck crane make Van
- Driel w/ SWL of 1,000kg and 8.15m outreach, both according to MCA rules, for 6 person + equipment
- According to class requirement: Liferafts, Lifejackets, Immersion Suits Rockets, smoke signals
- Medicine box according to MCA

FIRE FIGHTING

- 1 x Consilium/Salwico type CS 4000 connected to the AMS system in all accommodation spaces, the E / R, technical spaces according Class
- 1 x Marioff type Hi-Fog 2000 water mist system in E / R
- 1 x Fire detection and smoke alarm installation
- Heat & smoke detectors in accommodation, infra-red detector over main & auxiliary engines
- 1 x CO2 system in galley according to class
- Fire-extinguishers and fire hoses with nozzles
- 2 x Sets of 2 x fire men's outfits complete with hoods
- Gloves, boot
- Breathing apparatus
- Safety torch
- Fire axes
- Fire-proof suit
- 3 x Identical self-priming centrifugal pumps

ALARMS

- PLC based technical alarm system for the engine room management
- Gas detection system

13. TENDERS & WATERSPORT EQUIPMENT

TENDERS

- 1 x 14.90m Windy 52 Blackbird Chase Boat with 3 x stern drive engines
- 1 x 10.00m Wahoo LX RIB with 2 x 300hp engines
- 1 x 8.00m Ribeye tender for beach landings and watersports
- 1 x 5.00m Polaris Rescue Boat with 1 x 75hp engine

WATERSPORT

- 4 x Yamaha FX SHO CR waverunners
- 2 x Cayago Seabob
- 1 x Jet Surf GP 100 (fun race) NEW!!
- 1 x Schiller Water Bike NEW!!
- 3 x Wakeboards
- Kneeboard
- 2 x Onyx kiteboards
- 2 x Stand up paddleboards
- Waterskis & tows
- Rave Trampoline
- 2 x Hobie Kona kayaks
- 2 x Hobie inflatable kayaks
- Waterslide
- Anti-jellyfish net
- Dive equipment & compressor
- Fishing equipment
- Inflatable climbing wall

GYM

- 1 x Spin Bike
- 1 x Technogym Forma treadmills
- Technogym Kinesis Multigym
- Various kettlebell weights (1-12kg)
- Yoga mats, Fitness balls, redondo ball pilates, stability ball, skipping ropes, 3 x resistance ring pilates, and resistance bands
- Boxing gloves and pads for on board sparring

SUNRAYS

14. COMMENTS

The spectacular M/Y SUNRAYS was delivered in 2010 by Oceanco. The sleek and elegant exterior lines are designed by Bjorn Johansson exuding an overall impression of power and strength. Her interior design and decoration is by Terence Disdale Design who describes Sunrays' interior as "a signature Disdale interior with a twist" due to its extensive use of natural and exotic materials. The Captain of this outstanding yacht calls it "the most versatile interior I have seen – the ultimate guest and owner's yacht."

KEY FEATURES

- Northern European quality and pedigree
- Clean exterior lines with an appealing and versatile interior design
- Flexible accommodation for up to 22 guests in 9 cabins
- Guest elevator
- Gym and spa facilities
- Helipad suitable for an EC 145 or similar
- 20 knots top speed and a range of up to 6,000nm
- Excellent charter record
- Substantial 2018 refit
- One owner since new

15. MAINTENANCE NOTES

SPRING 2018

- New exterior cushions
- New sun deck gym
- New teak decking around Sun Deck Jacuzzi
- New exterior bar, seating and teak decking on Master Deck Aft
- Upgraded exterior sound system including: new speakers, new 4K cinema TV (98 inch), various new TV's, and new projector system
- Installation of new upgraded VSAT (faster internet)
- New exterior LED lighting
- New carpet throughout owner's deck

SPRING 2017

- Main engine works
- Service of the generators
- Paint repairs
- New antifouling
- Service on the stabilisers etc.

PREVIOUS WORKS INCLUDED

- Complete Audio/Visual upgrade including new TVs, Amplifiers and software integration, iPad controllers
- New speakers on the exterior aft decks
- New WiFi network throughout the whole vessel
- New nightclub lights/laser smoke machine on music deck aft
- Recently repainted the whole yacht
- New carpets throughout the owners areas
- Annual, French polishing of high gloss furniture
- Marble polishing and treatment
- New bedsheets / towels
- New plates (Hermes Edition)
- New Jet skis
- Big service on Main Engines
- Annual service of ships generators
- Full Exterior Repaint in 2015 / 2016
- New integrated bridge system including all new screens

NOTE: The following is excluded from the sale: EC 145 helicopter as shown in the images, any artwork and personal effects

The details of this vessel are offered in good faith but cannot be guaranteed. The buyer should instruct his agents, and / or his surveyors, to investigate such details as the buyer desires to be validated. This vessel is offered subject to prior sale, price change, or withdrawal without notice.