



**SEA  
XPLORER**

Built by DAMEN

DISCOVER  
YOUR WORLD  
BEYOND LIMITS

**DAMEN**



**SEAXPLORER**

# CONTENTS

## THE START OF A GREAT JOURNEY



*Since we launched this exciting new expedition yachting concept at the Monaco Yacht Show, we have sold two SeaXplorer yachts – a SeaXplorer 75 and a SeaXplorer 65 – which are now both under construction. Today, before the first build has even touched the water, the SeaXplorer has quickly acquired an enviable and serious reputation in the high-end yachting market.*

*The SeaXplorer range has grown to five designs from 55 to 100 metres in length. Behind each of these designs is DAMEN's dedicated SeaXplorer design team, a well-established pool of naval architecture talent and shipbuilding expertise. Together with our design partners at DAMEN Research, our luxury yacht builder AMELS, EYOS Expeditions and AZURE Yacht Design, we have the know-how and resources to meet the individual requirements of each client.*

*We are enormously proud to offer the highest levels of safety, professionalism and luxury lifestyle in the expedition yachting market. But we also understand that behind the technology and the innovation, the SeaXplorer is about unforgettable moments, the drive for adventure and the most spectacular destinations on Earth. Where will your journey take you?*

*Rose Damen, Commercial Director*

FINALLY, A TRUE EXPLORER  
RECONNECT WITH RAW BEAUTY  
EXCLUSIVITY AWAITS  
UNSPOILED DESTINATIONS  
THE EXPERIENCES THAT SHAPE A LEGACY  
MAKE DISCOVERIES  
REACHING THE WILDEST PLACES ON THE PLANET  
MARE INCOGNITUM  
IN THE FOOTSTEPS OF GIANTS  
THE GREATEST ESCAPE  
THE WILDEST PLACES ON EARTH  
NOTHING ELSE LIKE IT  
SAFETY FIRST  
GET READY FOR THE ICE!  
GLOBAL AUTONOMY  
WHERE THE ACTION IS  
NOW, DISCOVER TRUE CAPABILITY

VIEW THE RANGE 55 TO 10 METRES  
SEAXPLORER DESIGN PARTNERS

SEAXPLORER 55

SEAXPLORER 65

SEAXPLORER 75

SEAXPLORER 90

SEAXPLORER 100

WHY DAMEN?

THE DAMEN GLOBAL QUALITY STANDARD



# FINALLY, A TRUE EXPLORER



*Rose Damen explains  
how we developed  
the SeaXplorer range.*



# RECONNECT WITH RAW BEAUTY

Set out on the journey of a lifetime – life-changing encounters to share with friends and family.



THE 55-METRE SEAXPLORER STARTS  
THE RANGE, FOLLOWED BY THE 65, 75, 90  
AND 100-METRE SEAXPLORER.



# EXCLUSIVITY AWAITS

Total comfort, style and safety in places others can't reach.  
Go there, and on your terms.

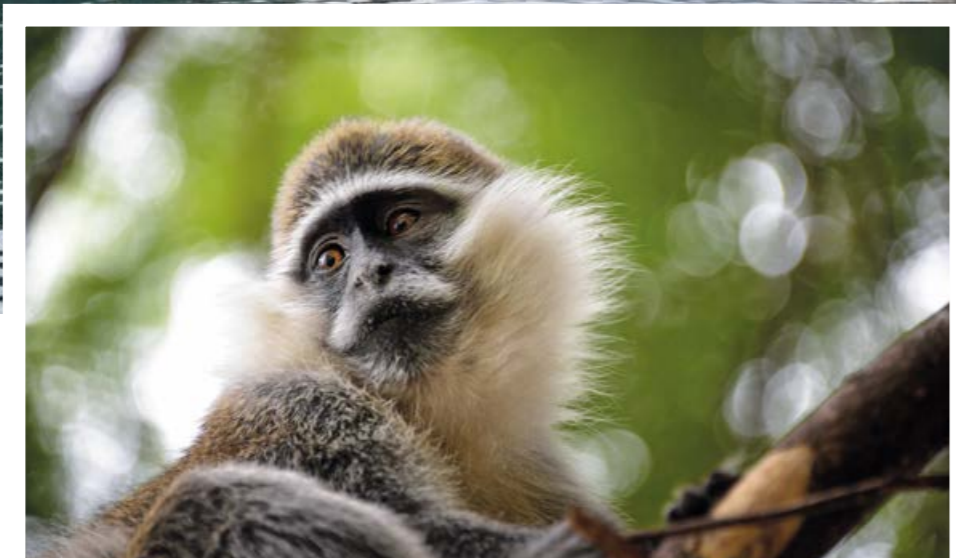
SEXPLORES 90



# UNSPOILED DESTINATIONS



SEAXPLORER 55



- Venture well beyond the usual yachting circuit.
- Places you don't have to share with the crowds.



SEAXPLORER 65

# THE EXPERIENCES THAT SHAPE A LEGACY

The extraordinary moments when the next generation of leaders and strong characters emerge.





## ADVENTURES WITHOUT LIMITS

- Snorkeling and scuba diving
- High-tech deepwater submersibles
- Helicopter excursions
- Mountain biking and heli-skiing
- Camping on the ice
- Kayaking, sailing, fast tenders and waverunners
- Sport fishing
- Jet-boating up wild rivers
- Floatplane safaris



# MAKE DISCOVERIES





# “REACHING THE WILDEST PLACES ON THE PLANET”

SEXPLORES 90

Organising exclusive private expeditions to destinations like Greenland, Antarctica and Papua New Guinea is a growing niche in high-end luxury travel. Seattle-based New Zealander Rob McCallum is right at the forefront as one of the founders of EYOS Expeditions, whose clients want to go far beyond the conventional yachting experience.



# MARE INCOGNITUM

Hic sunt dracones (here be dragons)

Covering more than two-thirds of the planet's surface, our oceans are vast. Much of the seabed remains unexplored, and whole coastlines are poorly charted, sometimes relying on measurements taken centuries ago. In these remote corners of Earth, you can still find mysteries yet unsolved and forgotten treasures of the deep.



THE SEAXPLORER'S FULLY CERTIFIED HELIDECK AND FULLY ENCLOSED HELICOPTER HANGAR WITH LIFT SYSTEM, PLUS AMPLE FUEL STORAGE, MAINTENANCE FACILITIES AND PILOT ACCOMMODATION.



SEAXPLORER 90



ERNEST SHACKLETON



CAPTAIN  
ROBERT FALCON SCOTT



JAMES CLARK ROSS



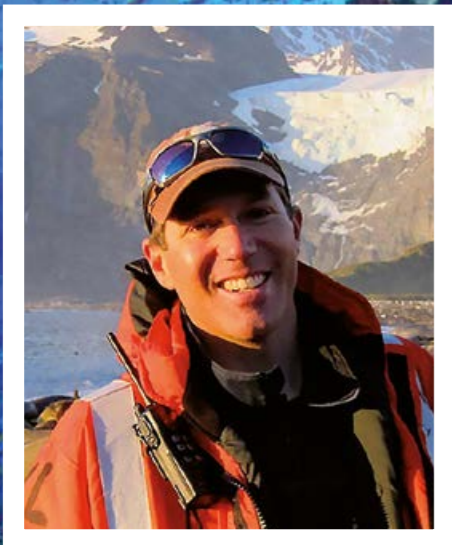
ROALD AMUNDSEN



CAPTAIN JAMES COOK

# IN THE FOOTSTEPS OF GIANTS

What records will you break with the technology of today's new era of exploration?



*"The SeaXplorer is a luxurious oasis in the wilderness."*

*Tim Soper,  
Founding Partner, EYOS Expeditions*



# THE GREATEST ESCAPE

It's not how far you can go. It's how long. Remain on station in remote areas for several weeks, with provisions for 40 days of full luxury service with no port calls.



# THE WILDEST PLACES ON EARTH

The Mediterranean and the Caribbean Seas and all their islands are undoubtedly beautiful, but altogether they amount to only 6% of all the world's coastlines and only 1.5% of the ocean's total surface area. Yet 90% of luxury superyachts never venture any farther. If you're willing to go off the beaten track, Earth is still a big place.





# NOTHING ELSE LIKE IT

The ultimate crossover innovation

The SeaXplorer is a design innovation combining the best AMELS luxury yachting solutions with the best of DAMEN's professional and naval shipbuilding experience. The result is a luxury expedition yacht with full capability for remote destinations – from extreme polar to remote tropical areas. From the very first sketches to the fully engineered range, DAMEN has designed every detail of these ruggedised yachts for the most extraordinary adventures anywhere on the planet.

# SAFETY FIRST

PURPOSE-BUILT FOR THE POLAR CODE



SEAXPLORER 55

*“These risks are precisely why the International Maritime Organization developed the Polar Code – to ensure that vessels can explore the polar regions in a safe manner and prevent damage to the fragile environment.”*

*Jaap van der Velde,  
SeaXplorer Design Manager*

DAMEN’s SeaXplorer is the world’s first purpose-built Polar Code private expedition yacht with full capability from extreme high latitudes to remote Tropical destinations.

## No certificate, no entry

The SeaXplorer is purpose-built to comply with the International Maritime Organization’s Polar Code, in force since January 2017 for all new build and existing vessels entering Arctic and Antarctic waters. The regulations are applicable (in general) above 60° north and below 60° south (see illustration). Your Yacht Manager will need to apply for a Polar Code certificate through a classification society. The certificate has three categories: A, B and C, referring to different hazard levels – from all-season, 5-metre thick multi-year ice coverage to open water summer conditions away from the ice.





# GET READY FOR THE ICE!



SeaXplorer 90



At the Hamburg Ship Model Basin (HSVA), we put the SeaXplorer to the test. The design successfully proved its icebreaking performance through extensive testing in conditions such as level ice and broken ice, including manoeuvring in ice conditions.

Superyacht owners are increasingly discovering the spectacular beauty of the polar regions. However, crews and owners should be aware of the safety risks for those on board as well as the potential environmental harm. Plus, the new Polar Code in force for both new and existing vessels raises the minimum standards for safety and environmental protection.

Polar regions have many hazards that yachts don't encounter in their normal cruising grounds.

- You will experience notoriously unpredictable and rapidly changing conditions.
- With even small changes in wind and currents, you can quickly find yourself surrounded by ice, which can be very dangerous for yachts without ice strengthening.
- Once stuck in the ice, it can take weeks before help arrives. It's even possible that the yacht succumbs to the forces in the ice and sinks.
- Topside icing will influence stability as well as machinery that was not designed to operate in subfreezing conditions.
- Hydrographic data is often inaccurate or incomplete, and the high latitude can affect navigational equipment.
- During your journey, you will be out of range of the nearest emergency response services.
- Plus, full of diesel, oil, wastewater and garbage, what risk does your yacht pose to the pristine nature and wildlife around you?



## WHAT DEFINES TRUE ENDURANCE FROM TROPICAL TO POLAR WATERS?

- There are no fine dining suppliers, catering or delivery services. You'll need to take it all with you in the large temperature and humidity controlled cold, freezer, dry and wine stores - along with a professional-sized galley for your chef.
- Pack plenty of luggage including polar, wet-weather, dive and other expedition gear. And it's nice to have a dedicated mudroom to change before stepping back into the yacht's luxury areas.
- Accommodate expedition staff, experienced guides and ice pilots to coordinate bespoke itineraries with the highest safety standards.
- Take a long-range helicopter (or two for extra redundancy). A hangar is recommended for weather and salt protection. And you'll need fuel, parts and accommodation for the pilots.
- Equip the yacht with medical equipment and a hospital - reaching the nearest emergency services could take several days.
- High capacity water makers.
- Fuel capacity to traverse any ocean with ease, as well as petrol for toys and tenders.
- Air conditioning systems for extreme summer and winter conditions.
- Workshops and ample storage for spare parts.
- Don't forget your garbage! In pristine environments and No Discharge Zones, there's no place to dispose your rubbish and wastewater so you'll need a comprehensive waste management system including garbage freezers and wastewater tank capacity.



# GLOBAL AUTONOMY

It's not how far you can go. It's how long. The SeaXplorer can remain on station in remote areas for several weeks, with provisions for up to 40 days of full luxury service with no port calls.



# WHERE THE ACTION IS

Store, launch and retrieve



The option of a spacious 10 square-metre swim platform (108 sq ft) makes for chic boarding. Guests can also enjoy time in the water before climbing the integrated stairwell and enjoying a spot of sunbathing.



It's a hive of activity. The crew get things going over three decks: from the certified helideck to the hangar bay and the additional below deck toy store. The enormous main hangar of up to 200 square metres (2,153 sq ft) means you can not only take everything you need with you, but you can fully protect your assets from weather and salt spray. That includes the helicopter, which descends via a lift system into the hangar.





NOW,  
DISCOVER  
TRUE CAPABILITY

## OPEN BRIDGE



## OBSERVATION LOUNGE

SEAXPLORER 65

## ULTIMATE HELI OPS



## SEA AXE BOW

SEAXPLORER 90

**1** **ULTIMATE DIVE CENTRE**  
Dive equipment, wetsuit drying room, facilities for blending mixed gas, and the optional added safety of a Recompression chamber.

**2** **OUTSIDE FUN**  
Luxury decks for sunbeds and loungers, plus the swimming pool with underwater lighting and Sun Deck Jacuzzi.

**3** **RELAXATION**  
Spacious Lower Deck Wellness Centre with hamam, steam room, sauna with rain shower, plus a fully equipped gymnasium.

**4** **SEA AXE BOW**  
Comfortable sea going behaviour thanks to DAMEN's uniquely stable SEA AXE bow form.

**5** **CROW'S NEST**  
Luxurious nook with panoramic views more than 20 metres above the water, the height of a seven-storey building.

**6** **EXPEDITION-SIZE VOLUME**  
Extra large crew areas for accommodating more crew and expedition staff for longer periods, plus huge stores for provisions, expedition gear and waste management.

**7** **LUXURY LIFEBOATS**  
Up to 9-metre davit-launched lifeboats, which also double as luxury limo tenders.

**8** **WATERLINE ENTRY / EGRESS**  
Boarding gates, just above the waterline, lead up to the mudroom, a transition zone to shed layers of polar gear before stepping back into luxury.

**9** **EXPLORE THE DEEP**  
Extra storage for personal submersibles, fly-by-wire ROVs, and all the necessary support equipment.

**10** **STERN ICEBREAKING**  
Safe passage through the ice thanks to the icebreaking stern and reinforced Polar Class hull.

**11** **VAST TOY STORAGE**  
Below deck, there is no shortage of space for canoes, kayaks, amphibious craft, heli-ski gear and more.  
• Motorcycles  
• Offroad 4-wheel-drive vehicles  
• Mountain bikes

**12** **TENDER STORAGE**  
• 12-metre DAMEN Cabin RHIB for dive support, sonar, fishfinders, submersible handling/standby  
• 12-metre limo tender  
• 4 x 5-metre heavy-duty Zodiac MK 5

**13** **DRY-IN EXPEDITION TENDER**  
With the advanced Launch and Recovery System (LARS) for the SeaXplorer's 7.5-metre DAMEN RHIB with waterjet propulsion, guests step on board the tender on Main Deck, staying dry and comfortable, and are on the water within minutes.

**14** **7-STAR ACCOMMODATION**  
Top luxury suites for all your guests with interiors by the designer of your choice. State-of-the-art entertainment and A/V systems.

**15** **SKY LOUNGE**  
Even in polar climates, the Sky Lounge's folding glass doors and outdoor heating create the ideal spot for an indulgent hot chocolate and uninterrupted panoramas.



# START THE TIMER AS OUR ADVENTURE UNFOLDS:

**0:00:00**

It's the call we've been waiting for. "Humpback whales! About 600 metres off the bow."

**0:01:30**

A minute later, six of us and our guide gather in the Main Deck mudroom ① to kit up with our cold weather gear.

**0:04:00**

We're ready to go, and we can step straight on board the 7.5-metre rigid inflatable ② while it's still on deck. The professional launch and recovery system ③ starts lowering us within seconds.

**0:07:00**

We're on the water, sea spray flying! With the waterjet propulsion, our tender is quickly outpacing the SeaXplorer, which hasn't even come to a stop yet.

**0:11:30**

Amazing, we're just metres from the pod of whales!

**0:12:00**

Behind us we see the SeaXplorer's stern tender garage's door ④ open. The guide tells us that our filmmaker is heading out to shoot our encounter with the whales.

**0:27:30**

We're blown away by the experience and can't wait to share with the rest on board. There's a squall closing in so we head back.

**0:29:00**

The SeaXplorer is holding station with DP so we can pull alongside the waterline boarding gate ⑤. From there, the internal staircase takes us one deck up to the mudroom.

**0:36:00**

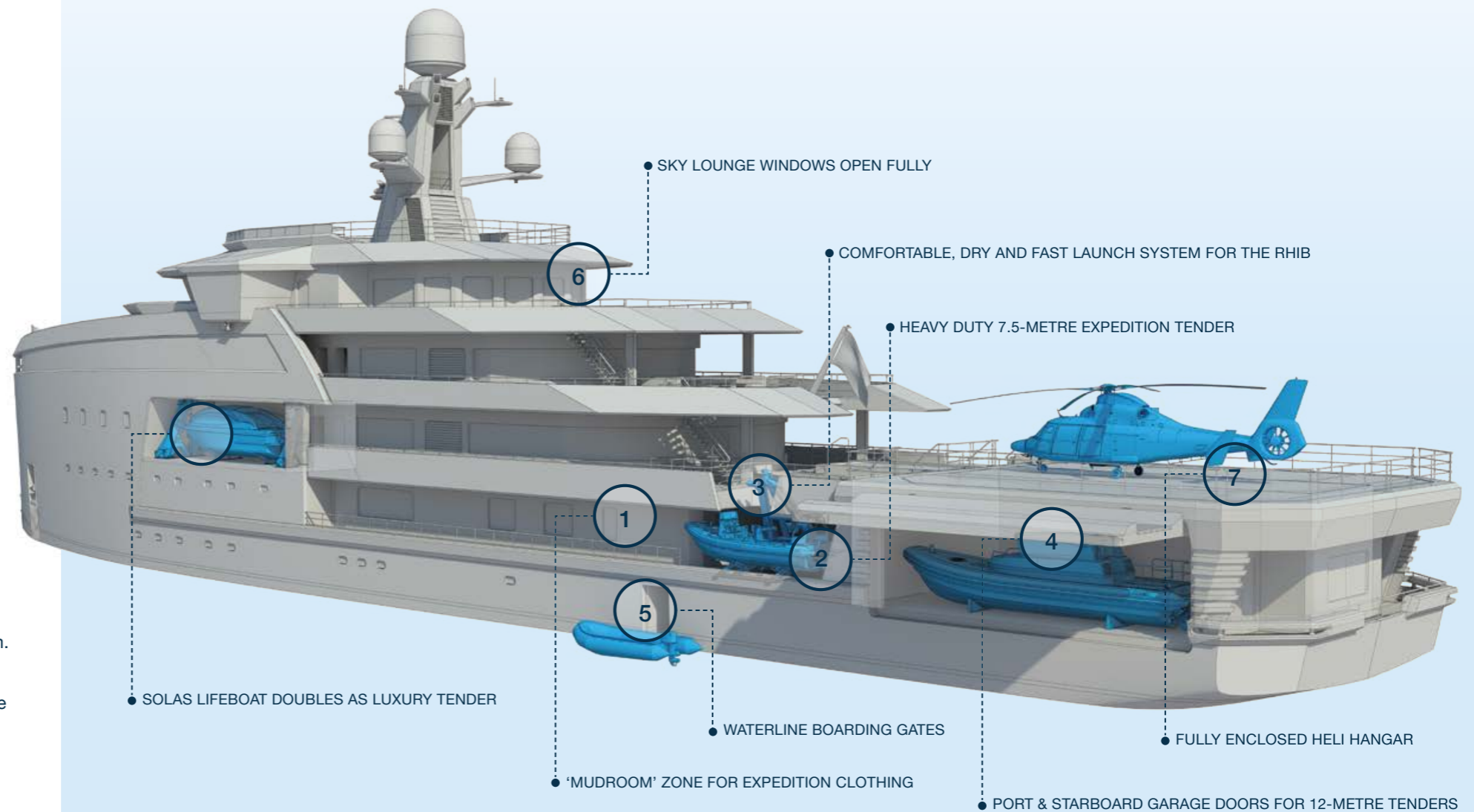
Warmed up, we head to the Bridge Deck lounge ⑥ for a refreshment and realise that we're already underway again.

**0:42:30**

We can see the helideck hangar doors slide open and the helicopter emerges on the lift ⑦. Our guide reminds us that we have an hour to relax before our heli-ski trip. Smiles all around...

## EXPEDITION LOGISTICS

Never miss a chance encounter

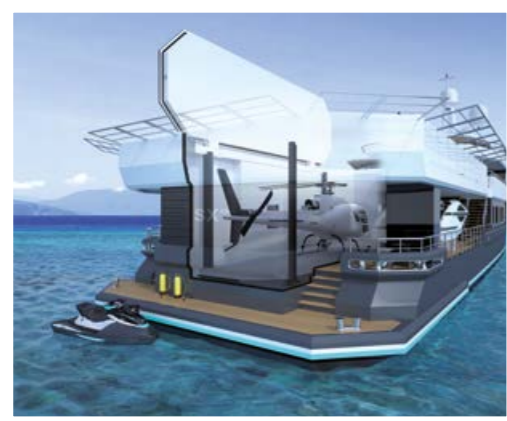


There are plenty more tenders and toys parked inside the SeaXplorer 90, including a 12-metre limo tender, a submersible, waverunners, kayaks and much more.



When clients approach us about their perfect SeaXplorer configuration, they bring inspiring ideas for incredible journeys and unforgettable adventures. The designs in the SeaXplorer offer many options for customisation to fit your unique requirements. Get in touch with our SeaXplorer team to discuss your idea.

# CUSTOM SOLUTIONS



The SeaXplorer 55 has an Aft Expedition Centre, a multifunctional space that can be tailor-made to fit your unique requirements: for example, a helicopter hangar, a Beach Club, a tender slipway or a fitness centre.

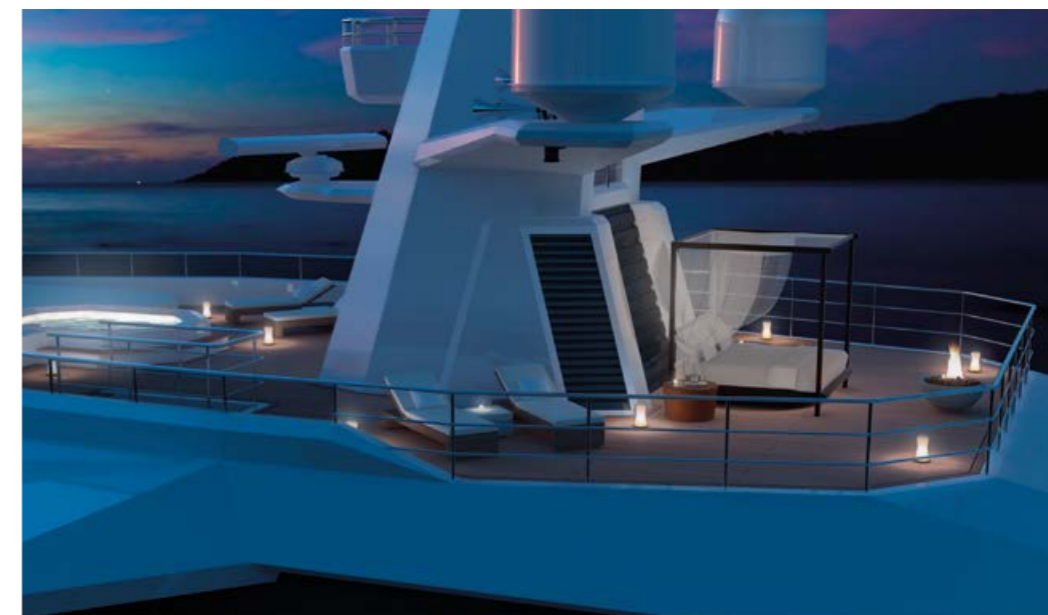


# NO COMPROMISE ON THE SUPERYACHT EXPERIENCE



SEAXPLORER 90

The SeaXplorer's guest interiors can match the top level of an AMELS superyacht, bearing the stamp of your individual originality by a leading interior designer of your choice. Through the synergy of DAMEN and AMELS, the SeaXplorer team has access to the Dutch luxury yacht builder's deep understanding of the yachting experience at the highest level and long experience of working with the most renowned yacht designers, bringing the unique vision of each Owner to life.





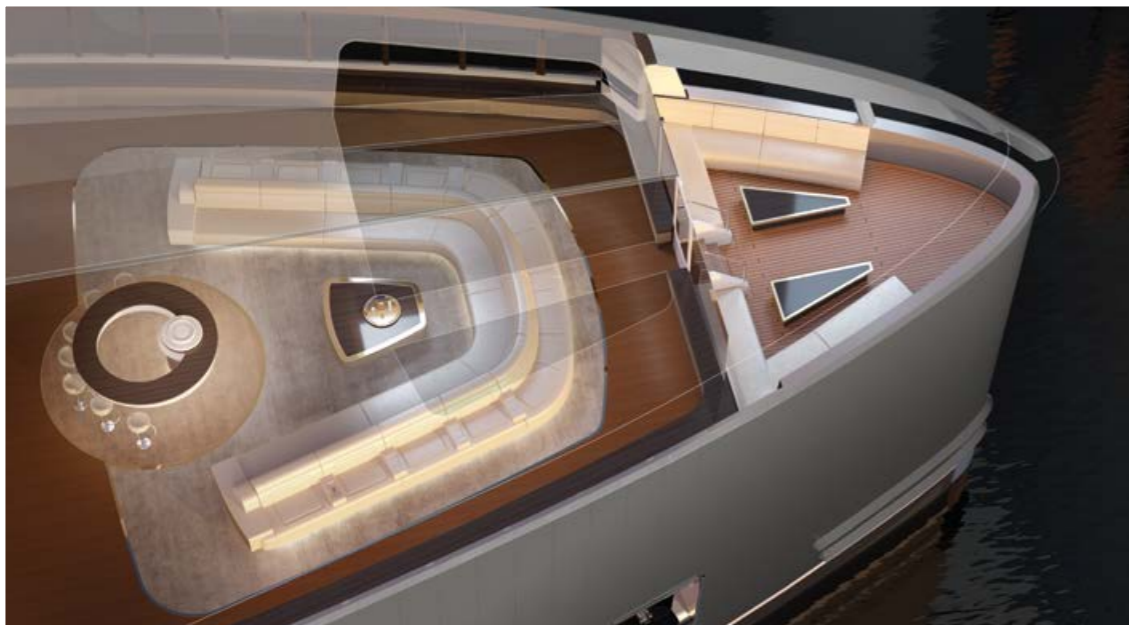


SEXPLOER 90

# WARM NIGHTS

MAIN SALOON ON UPPER DECK

Come together to relive moments shared during the day, and anticipate the marvels of the next.



Follow the yacht's progress from a stunning vantage point up to 9 metres above the waterline. Over the vertical bow, you'll see dolphins leaping on the bow wave or ice floes breaking away.



SEXPLOER 90

# ONCE IN A LIFETIME VIEWS

OBSERVATION LOUNGE WITH BOW POINT OUTDOOR DECK

Enjoy incredible surroundings under the skylight or experience the wilderness outside while watching the ocean over the bow.



SEAXPLORER 90

# ON TOP OF THE WORLD

## BRIDGE DECK SKY LOUNGE

The Sky Lounge, which opens fully to the aft deck for charming, informal and heated outdoor relaxation, connects with the Wheelhouse.



SEAXPLORER 90

# PURE INDULGENCE

OWNER'S SUITE

Combines the ultimate in luxury yachting comfort, elegance and indulgence with stunning views of places other yachts can't reach.



# SMART CREW LOGISTICS AND PROFESSIONAL FACILITIES

- MLC compliant cabins for up to 50 crew
- Spacious Captain's cabin and adjoining Captain's office
- Ship's office, Expedition Operations Centre, mess, lounge, gymnasium, Internet cafe, hospital and workshops
- DAMEN quality professional engine room and machinery
- Optimised design for crew safety and wellbeing



CREW CABIN





# DREAM TEAM CREATES BEAUTIFUL CROSSOVER

The SeaXplorer is a product of DAMEN's Yacht Support and SeaXplorer Product Group, a dedicated team of experienced yacht building experts based in the Netherlands. From the very first sketches to the fully engineered range, DAMEN's team of top experts works with highly knowledgeable partners.



SEAXPLORER 90



*"The SeaXplorer is the perfect balance – a crossover really – between professional proven technology and superyacht exclusivity."*

*Mark Vermeulen,  
Product Director SeaXplorer*

*"If the Owner wants to configure some mission-specific functionality, we have a dedicated team with all the expertise to make it happen. There are a lot of possibilities and our focus is realising the client's vision for their adventures at sea."*

*Jaap van der Velde,  
Design Manager SeaXplorer*





# INSTANTLY RECOGNISABLE



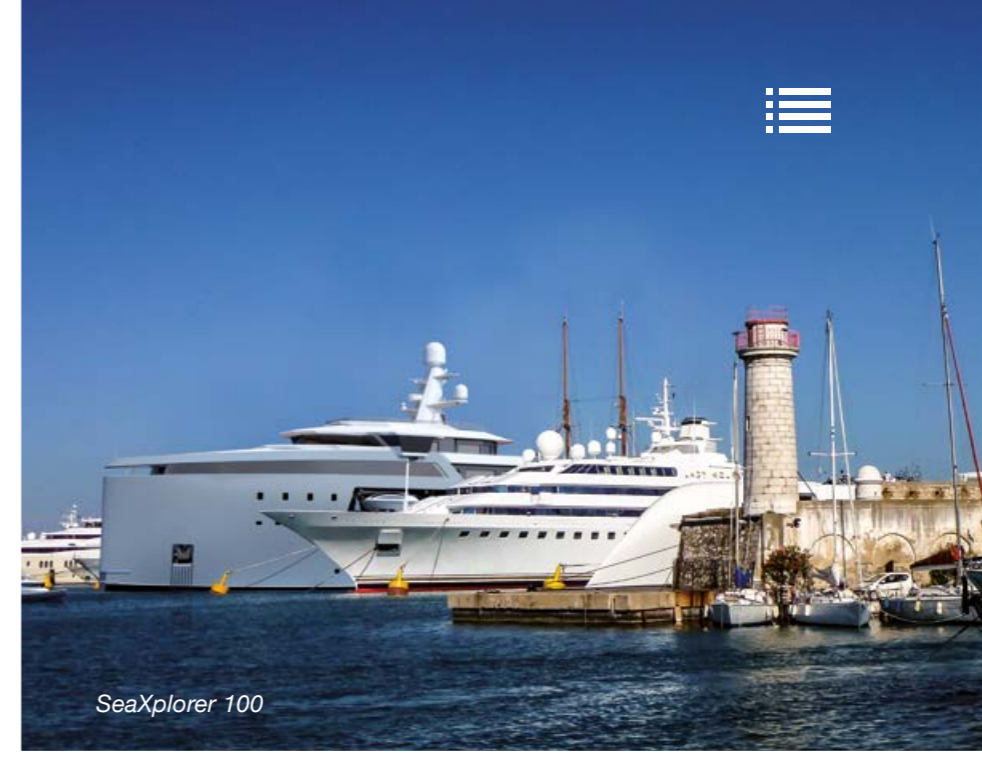
SeaXplorer 55

## *PAINT SCHEME, FAIRING AND FINISHING OPTIONS*

*Are you imagining a colour scheme all of your own? Would you like the hull and superstructure faired and finished to perfection or only the luxury areas? The SeaXplorer's exterior design gives you many options to suit your requirements.*

The SeaXplorer range has a head-turning exterior design by the well-known Dutch studio Azure Yacht Design & Naval Architecture. Their clever and elegant solution details subtle design transitions from professional to luxury finishes while celebrating the yacht's virile and well-built beauty.

# AT HOME EVERYWHERE ON THE PLANET



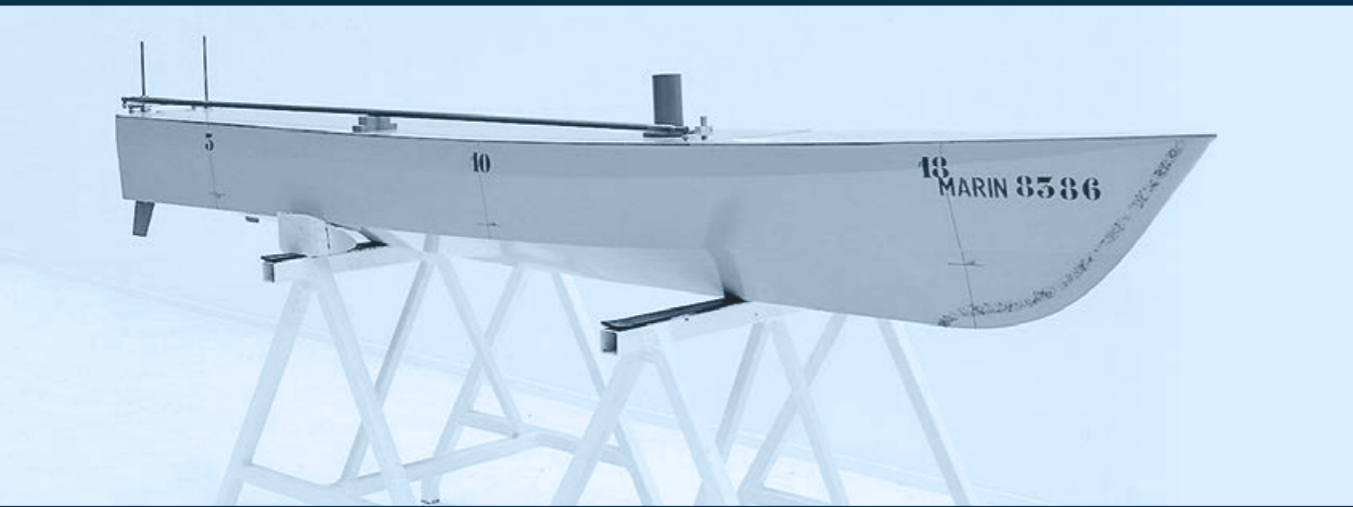
SeaXplorer 100

## CAST A LONG SHADOW

When you return to society, just as the great explorers of bygone eras, you'll be met with awe, fascination and we dare say a smidgen of envy.







# RESEARCH & DEVELOPMENT

## SEA AXE SUCCESS STORY

Like Yacht Support, the SeaXplorer range is based on DAMEN's patented and proven SEA AXE bow concept. The two ranges are the only SEA AXE designs specifically developed for the superyacht world.

- More than 160 DAMEN SEA AXE vessels sold since 2005, mostly for Offshore and Navy clients.
- Innovative hull form slices effortlessly through the waves instead of slamming.
- Far greater sea kindness and minimal discomfort and inconvenience for passengers.



*Thanks to our 18-month research programme, we were the first Dutch yacht builder to slash harmful NOx emissions by almost 80 percent and comply with the new Tier III emissions limits.*

## A LIGHT FOOTPRINT

Entering pristine, virgin territory bestows a hefty responsibility on all visitors. So, although the SeaXplorer is a heavyweight when it comes to expedition capability, it leaves a light footprint on the environment. We have optimised the hull design with Computational Fluid Dynamics (CFD) to reduce resistance and increase the efficiency of the propellers. Lower fuel consumption means less emissions and reduced environmental impact. The variable speed generator sets can power a highly efficient hybrid switchboard with peak-shaving (battery bank). Our residual heat recovery system further increases efficiency for air-conditioning, heating as well as potable water and pool heating.



VIEW THE RANGE  
55 TO 100 METRES



## The SeaXplorer range

# SEAXPLORER DESIGN PARTNERS

### DAMEN RESEARCH

Our dedicated R&D centre holds the maritime knowhow behind DAMEN's ships - from the world's top navy combatants to icebreaking and offshore support vessels.

### AMELS

The renowned Dutch luxury yacht builder, owned by DAMEN since 1991, builds luxury superyachts of the absolute highest quality and finishing.

### AZURE YACHT DESIGN AND NAVAL ARCHITECTURE

Dutch studio Azure is a well-known name in the superyacht industry with extensive experience in yacht design and naval architecture.

### EYOS EXPEDITIONS

The luxury expedition experts at EYOS have decades of experience designing once-in-a-lifetime experiences to our planet's most remarkable places.



SEAXPLORER 55



SEAXPLORER 65



SEAXPLORER 75



SEAXPLORER 90



SEAXPLORER 100



# SEAXPLORER 55

55.70 metres (183 feet) / 1,090 GT



## PRINCIPAL DIMENSIONS AND CHARACTERISTICS

Length overall	55.70 metres (183 ft)
Beam moulded	11.00 metres (36 ft)
Depth at side	5.15 metres (17 ft)
Draught (Max Full Load)	3.50 metres (11 ft)
Gross Tonnage	1,090 GT
Speed	15.0 knots
Helicopter max take-off weight	4,000 kg
Helicopter D value	13

## EQUIPMENT

1 HELICOPTER



1 8<sup>M</sup> CREW/RESCUE TENDER



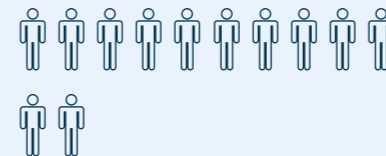
1 12M MULTI-DAY EXPEDITION BOAT



2 WAVERUNNERS



12 GUESTS



16 CREW

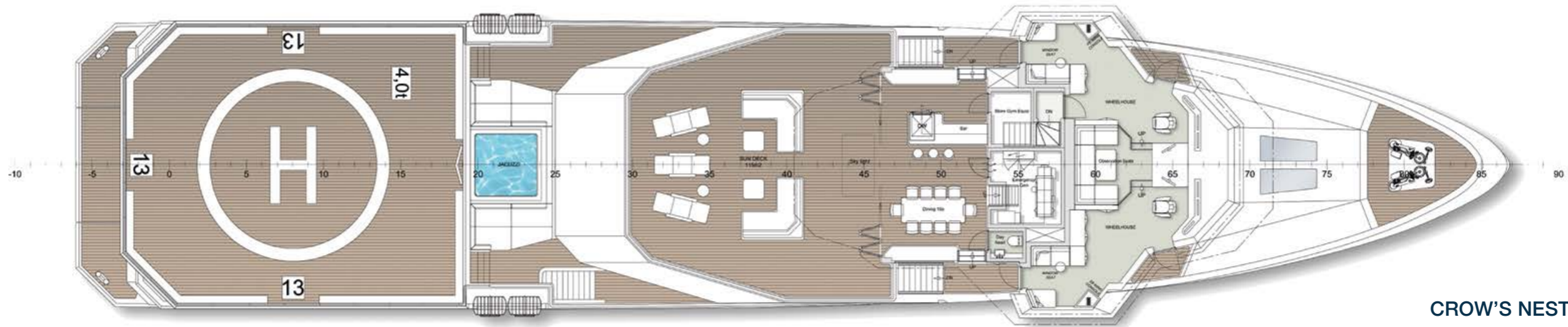


# SEAXPLORER 55

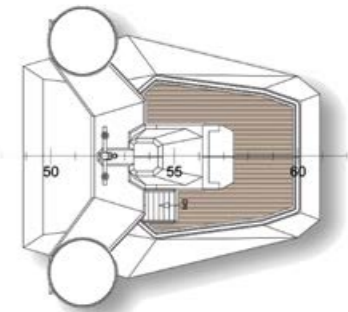
55.70 metres (183 feet) / 1,090 GT



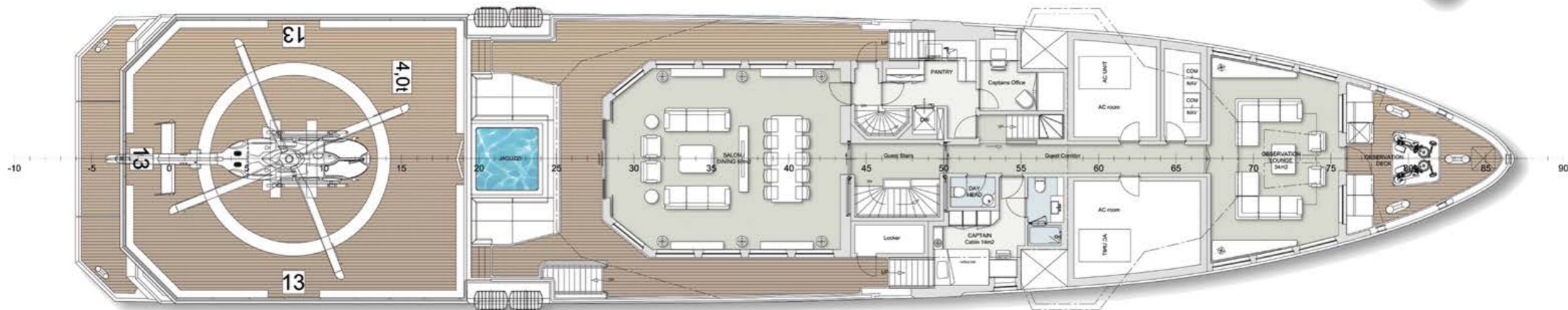
WHEEL/SUN DECK



CROW'S NEST



UPPER DECK

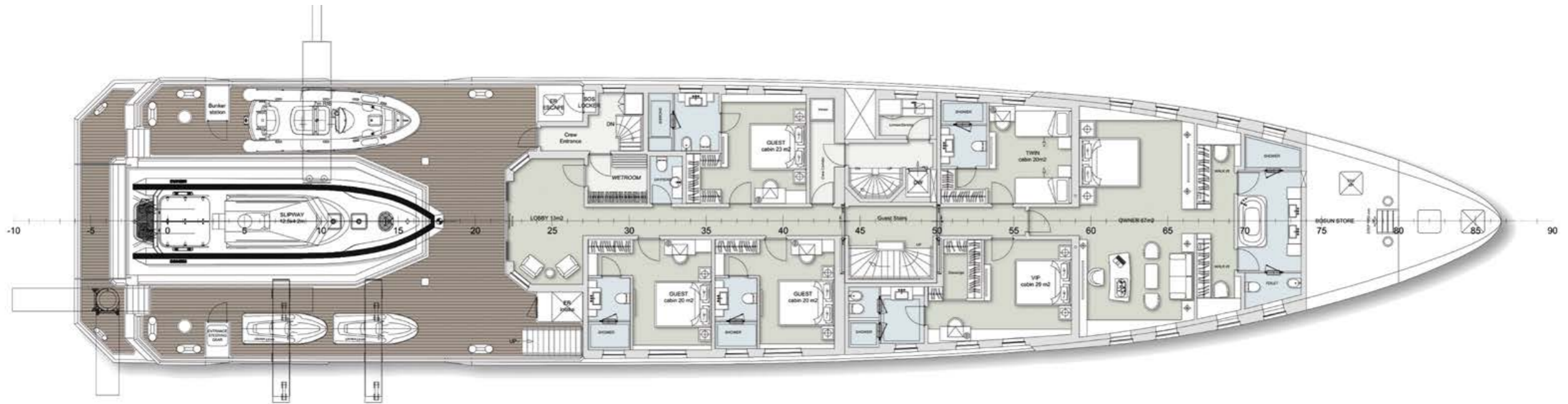


# SEAXPLORER 55

55.70 metres (183 feet) / 1,090 GT



MAIN DECK



LOWER DECK





# SEAXPLORER 65

65.00 metres (213 feet) / 2,000 GT



## PRINCIPAL DIMENSIONS AND CHARACTERISTICS

Length overall	55.70 metres (183 ft)
Beam moulded	11.00 metres (36 ft)
Depth at side	5.15 metres (17 ft)
Draught (Max Full Load)	3.50 metres (11 ft)
Gross Tonnage	1,090 GT
Speed	15.0 knots
Helicopter max take-off weight	4,000 kg
Helicopter D value	13

## EQUIPMENT

1 HELICOPTER



1 RESCUE BOAT



1 SUBMERSIBLE



1 DIVE SUPPORT BOAT



2 ZODIACS



4 WAVERUNNERS



12 GUESTS



20 CREW

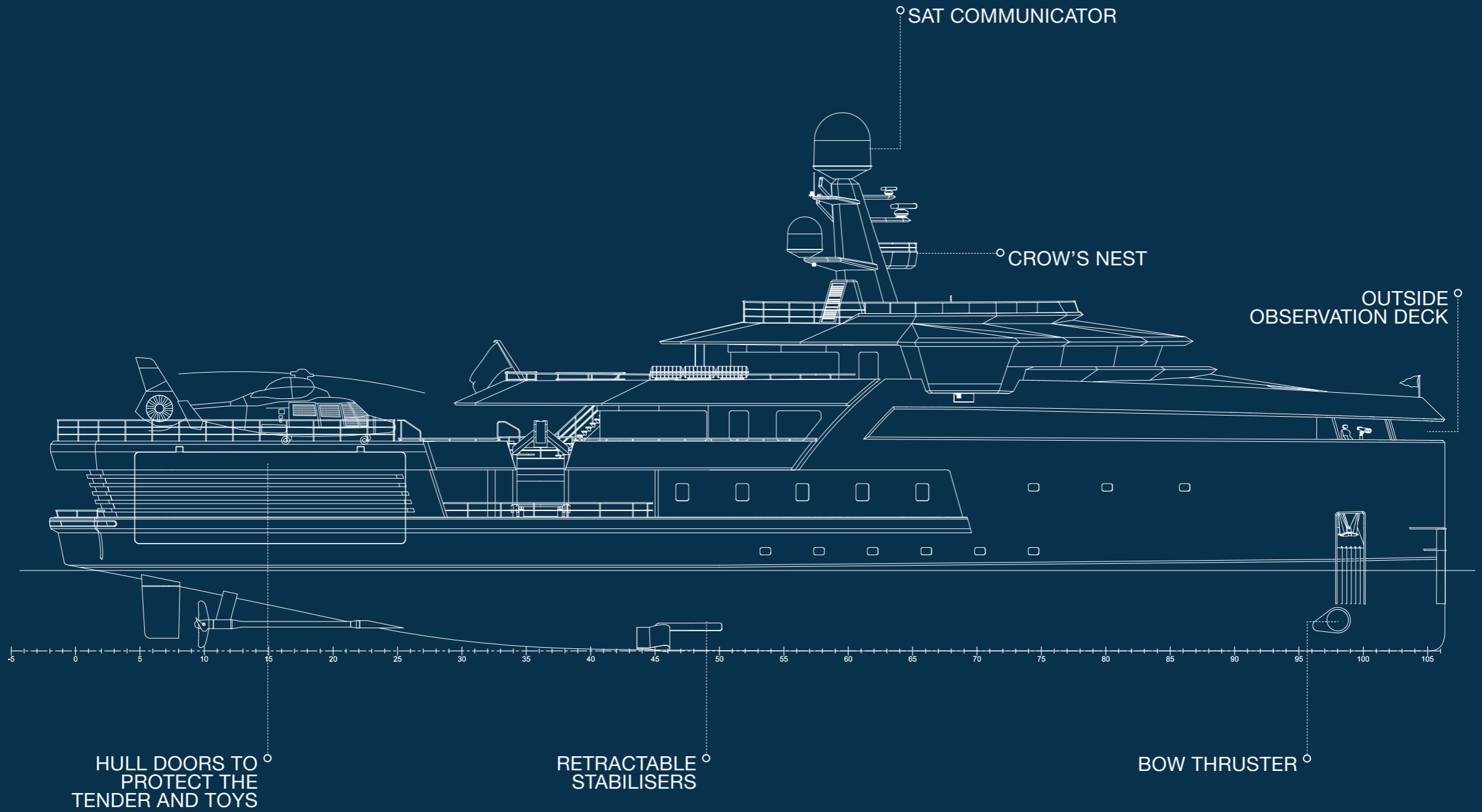






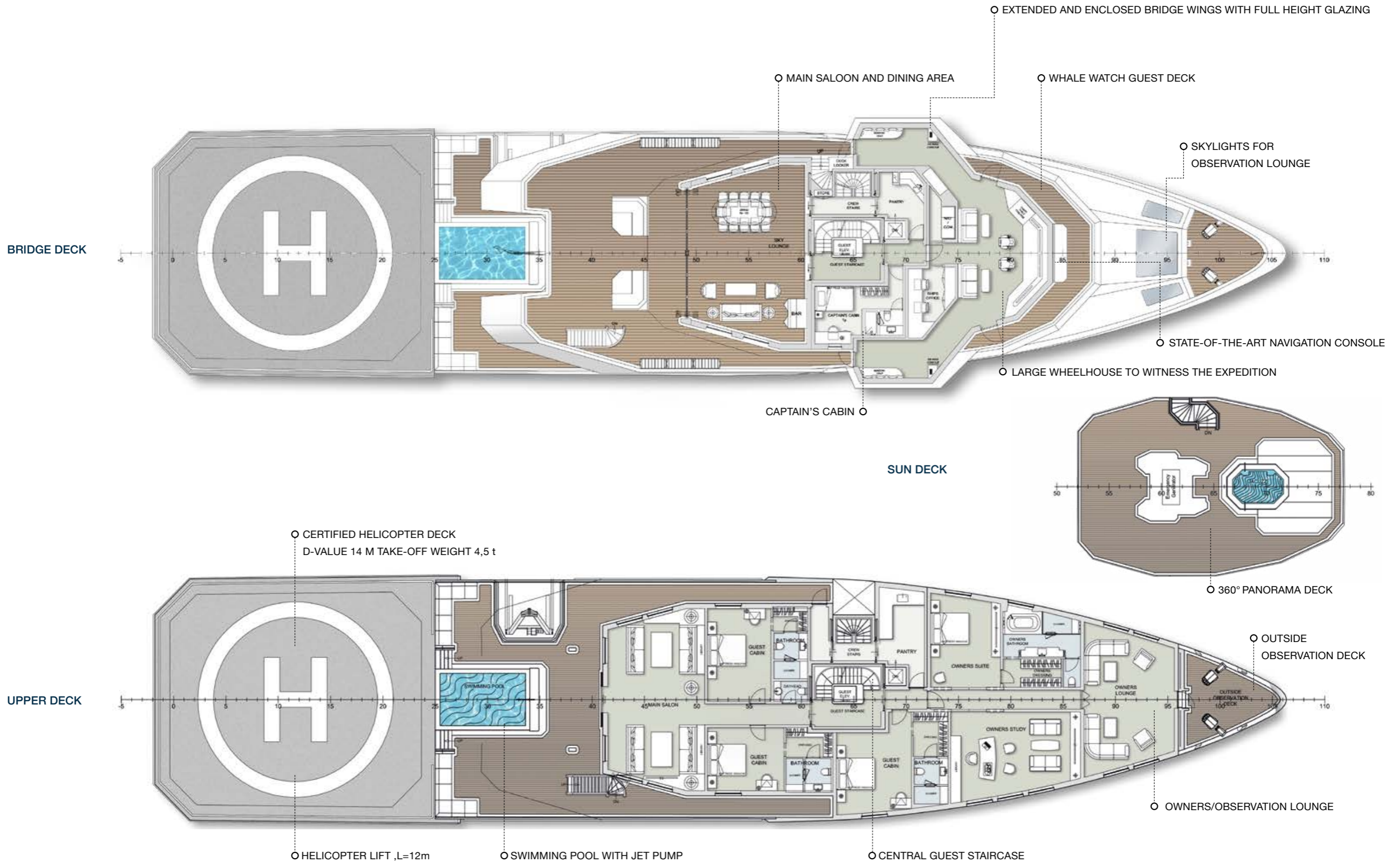
# SEAXPLORER 65

65.00 metres (213 feet) / 2,000 GT



# SEAXPLORER 65

65.00 metres (213 feet) / 2,000 GT







# SEAXPLORER 75

75.15 metres (247 feet) / 2,700 GT



## PRINCIPAL DIMENSIONS AND CHARACTERISTICS

Length overall	75.15 metres (247 ft)
Beam moulded	14.00 metres (46 ft)
Depth at side	6.50 metres (21 ft)
Draught (Max Full Load)	4.00 metres (13 ft)
Gross Tonnage	2,700 GT
Speed	14.5 knots
Helicopter max take-off weight	4,000 kg
Helicopter D value	13
Dive centre	1

## EQUIPMENT

2 HELICOPTERS



1 EXPEDITION RHIB / 2 ZODIACS (EITHER OR)



1 RESCUE BOAT



1 DIVE SUPPORT BOAT



1 LUXURY TENDER



1 SUBMERSIBLE



2 WAVERUNNERS



2 SNOWSCOOTERS



For further details about the SeaXplorer 75, please contact us.

12 GUESTS



25 CREW/EXPEDITION STAFF





# SEAXPLORER 90

90.00 metres (295 feet) / 5,000 GT



## PRINCIPAL DIMENSIONS AND CHARACTERISTICS

Length overall	90.00 metres (295 ft)
Beam moulded	16.00 metres (53 ft)
Depth at side	8.00 metres (26 ft)
Draught (Max Full Load)	5.25 metres (17 ft)
Gross Tonnage	5,000 GT
Speed	16.0 knots
Helicopter max take-off weight	5,000 kg
Helicopter D value	15
Dive centre	1

## EQUIPMENT

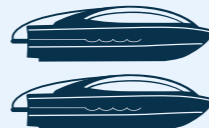
1 HELICOPTER



1 EXPEDITION RHIB



2 LIFEBOATS



4 ZODIACS



1 DIVE SUPPORT BOAT



1 LUXURY TENDER



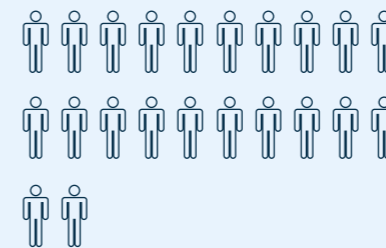
2 SUBMERSIBLES



4 WAVERUNNERS



22 GUESTS



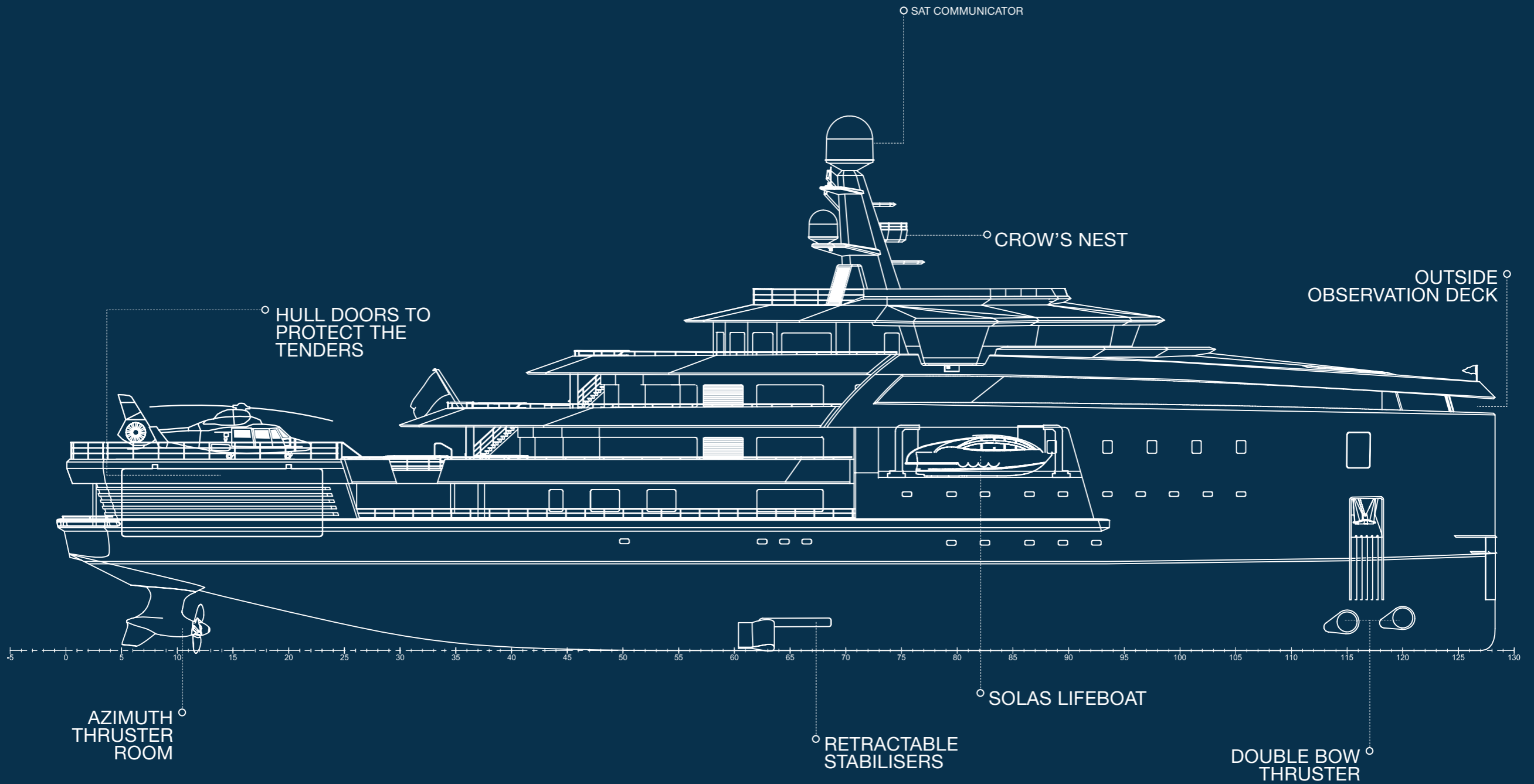
36 CREW





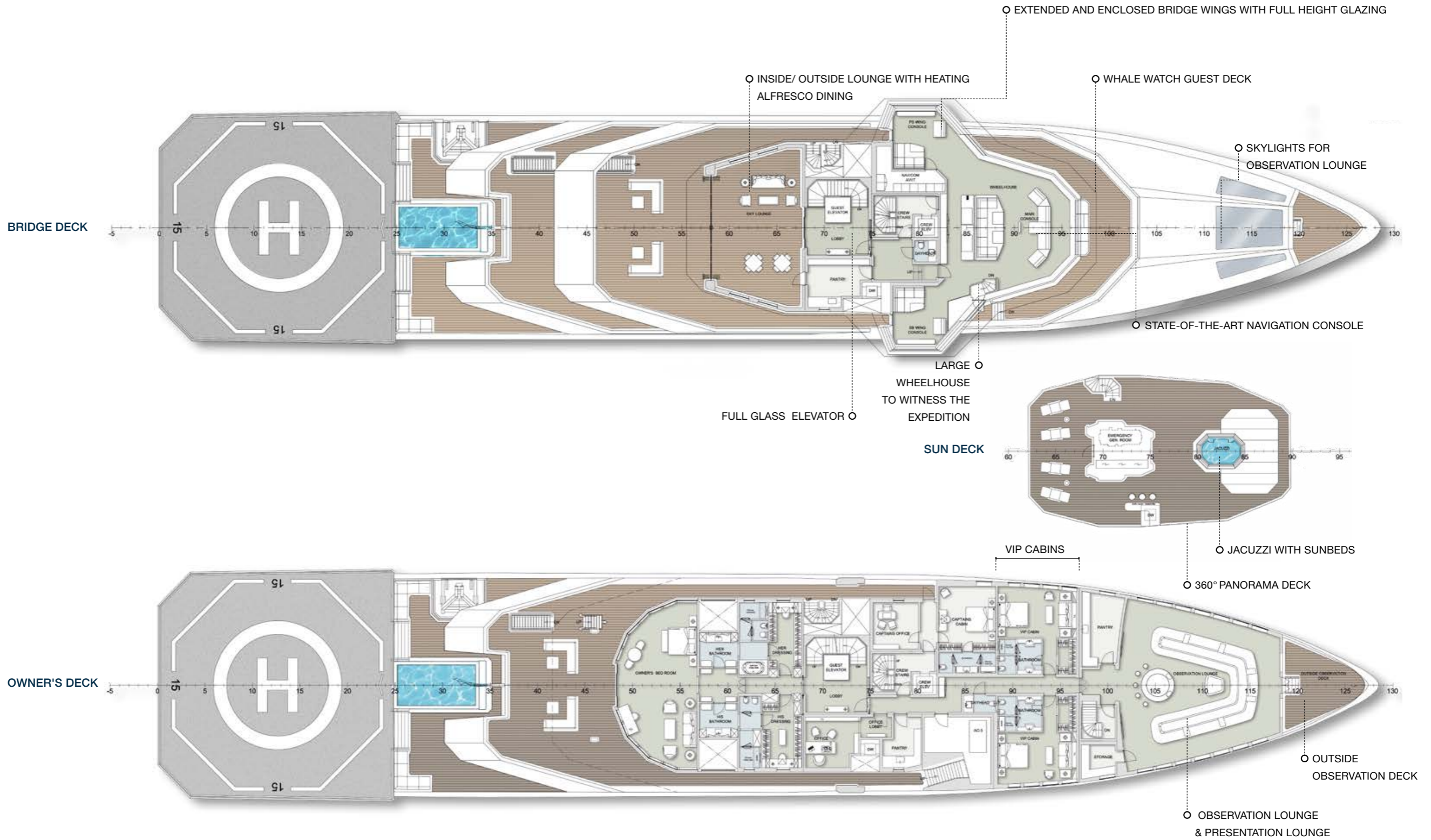
# SEAXPLORER 90

90.00 metres (295 feet) / 5,000 GT



# SEAXPLORER 90

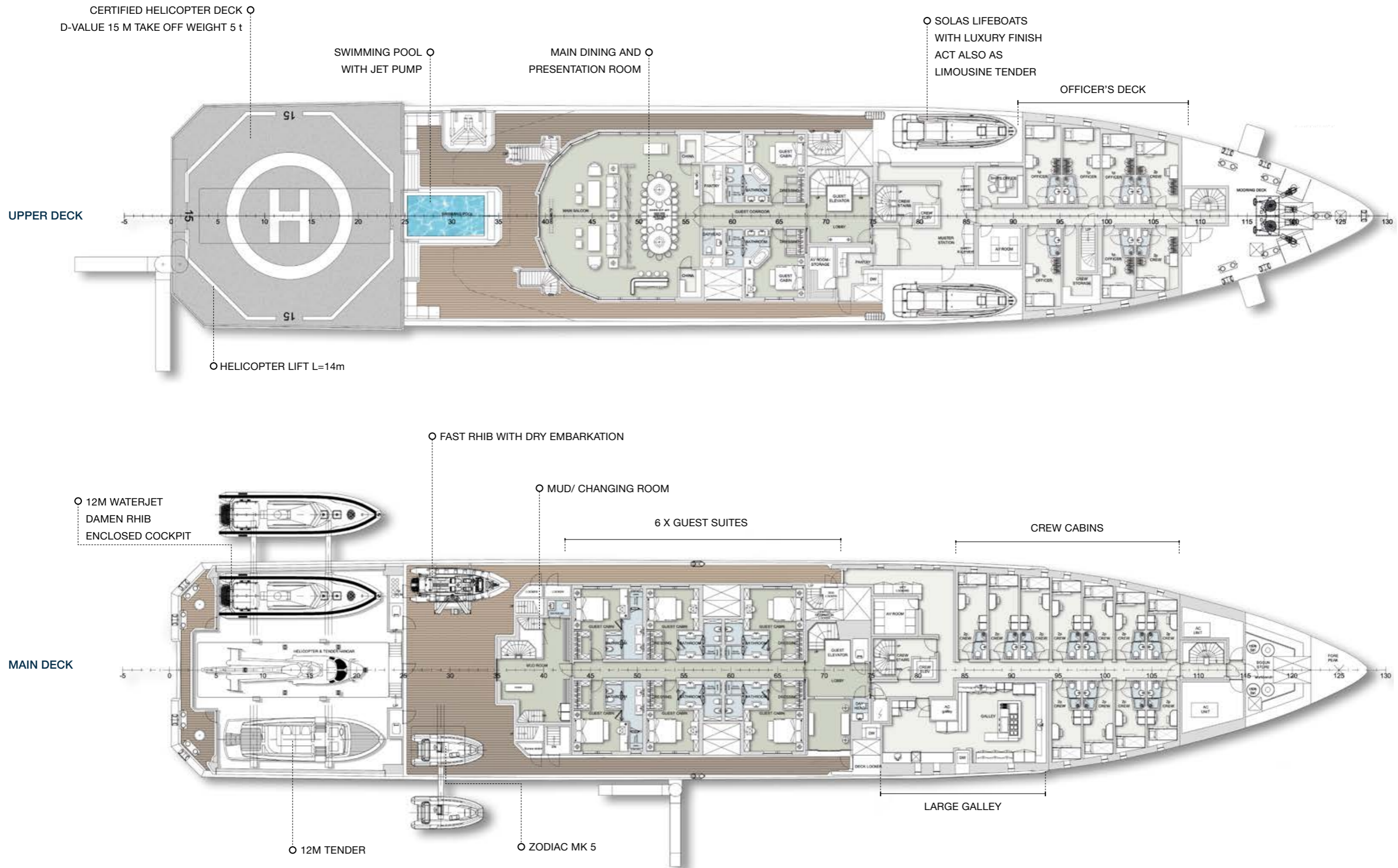
90.00 metres (295 feet) / 5,000 GT





# SEAXPLORER 90

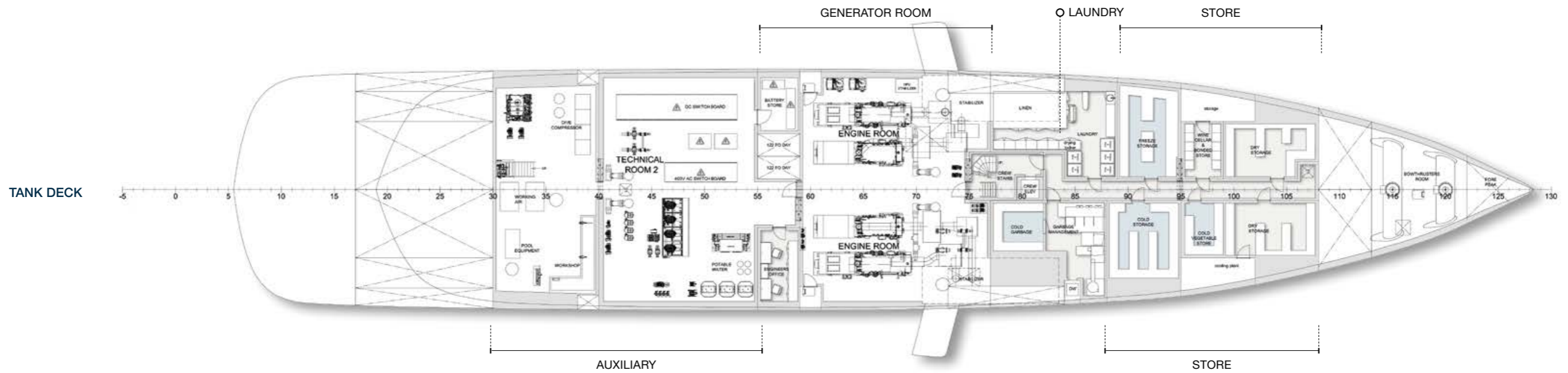
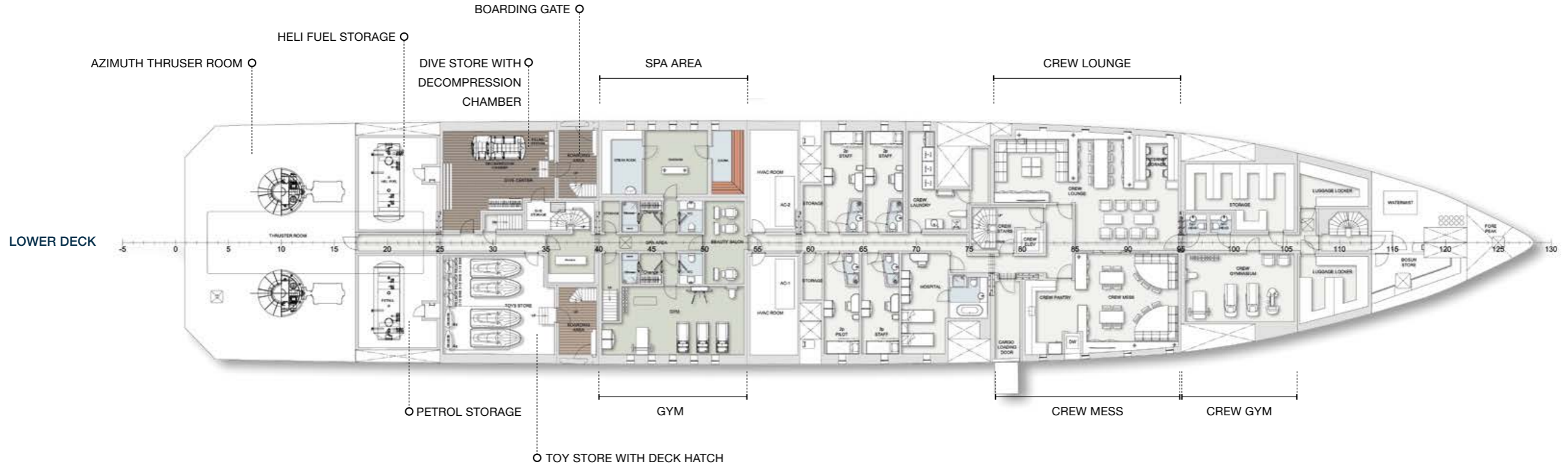
90.00 metres (295 feet) / 5,000 GT





# SEAXPLORER 90

90.00 metres (295 feet) / 5,000 GT





# SEAXPLORER 100

100.00 metres (328 feet) / 7,000 GT



## PRINCIPAL DIMENSIONS AND CHARACTERISTICS

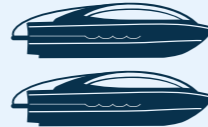
Length overall	100.00 metres (328 ft)
Beam moulded	18.00 metres (59 ft)
Depth at side	8.00 metres (26 ft)
Draught (Max Full Load)	6.00 metres (20 ft)
Gross Tonnage	7,000 GT
Speed	16.0 knots
Helicopter max take-off weight	6,000 kg
Helicopter D value	16
Dive centre	1

## EQUIPMENT

2 HELICOPTERS



2 LIFEBOATS



4 ZODIACS



1 EXPEDITION RHIB



1 DIVE SUPPORT BOAT



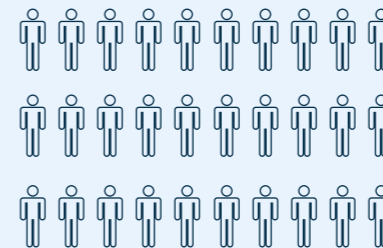
1 LUXURY TENDER



2 SUBMERSIBLES



30 GUESTS



50 CREW





# WHY DAMEN?

The Yacht Support range of vessels is built by family-owned Dutch shipbuilder DAMEN in cooperation with its luxury yacht builder AMELS (which has been a part of DAMEN since 1991). DAMEN has grown into one of the world's most successful shipbuilders under Chairman Kommer Damen.



**DAMEN**

**33**  
YARDS  
WORLDWIDE

**20** NEW BUILD  
YARDS

**6000**  
VESSELS  
DELIVERED

**200** HULLS IN  
STOCK

**180** DELIVERIES  
PER YEAR

**9000**  
DAMEN  
EMPLOYEES

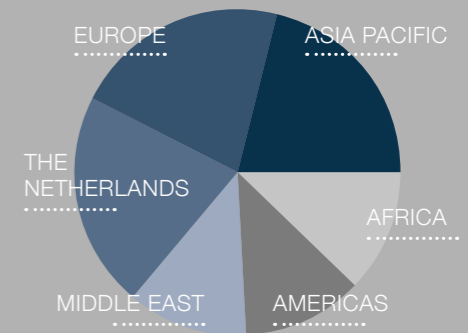
**72** SALES  
OFFICES

**5** SERVICE HUBS  
WORLDWIDE

FOUNDED IN  
1927

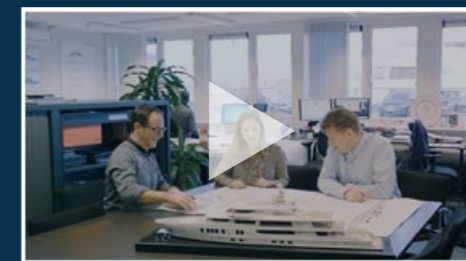
ACTIVE IN  
100+  
COUNTRIES

ANNUAL  
TURNOVER  
€2.1 BILLION



TURNOVER  
BY REGION

- Research and development
- Purchasing power
- Family-owned stability and continuity
- Fast delivery times building from stock
- Advanced production technology
- Global talent and specialist skill sets
- Global network (new build, service, refit and repair)



Rose Damen introduces the family-owned business behind the AMELS and DAMEN brands.



# THE DAMEN GLOBAL QUALITY STANDARD

- Proven DAMEN quality at yards around the world
- Global network of DAMEN service hubs
- Technology you can rely on in the toughest environments
- Production efficiency thanks to modular standardisation

## **NL** THE NETHERLANDS

- AMELS
- Damen Dredging Equipment
- Damen Shipyards Bergum
- Damen Shipyards Gorinchem (HQ)
- Damen Shipyards Hardinxveld
- Damen Schelde Naval Shipbuilding
- Damen Shiprepair Rotterdam

- Damen Shiprepair Vlissingen
- Damen Shiprepair Den Helder
- Damen Maaskant Shipyards Stellendam
- Damen Shiprepair Oranjerwerf
- Damen Shiprepair Amsterdam
- Damen Shiprepair Harlingen
- Damen Shiprepair Van Brink Rotterdam

- Y** DAMEN YARD
- R** SHIPREPAIR YARD
- S** SERVICE HUB

# Enquiries



*Rose Damen*  
*Commercial Director Yachting*



*Rob Lujendijk*  
*Managing Director AMELS*



*Rutger Dolk*  
*Sales Manager*



*Mark Vermeulen*  
*Product Director SeaXplorer*

**DAMEN**

Koningsweg 2  
4381 NA Vlissingen  
The Netherlands

+31 118-485 002  
info@seaxplorer.nl

[www.seaxplorer.nl](http://www.seaxplorer.nl)



# SEAXPLORER

## DISCLAIMER

All information, specifications, descriptions, and images in this brochure are considered preliminary, non-binding and subject to change by SEAXPLORER, EYOS and DAMEN. No images may be reproduced in any form without written permission of SEAXPLORER, EYOS and DAMEN.



# DAMEN

Koningsweg 2  
4381 NA Vlissingen  
The Netherlands

+31 118-485 002  
[info@seaxplorer.nl](mailto:info@seaxplorer.nl)

[www.seaxplorer.nl](http://www.seaxplorer.nl)