

D Y N A M I Q

GTT 115

LIMITED EDITION OF 7



Lomond Yachts

GTT 115
LIMITED EDITION OF 7

THE MODERN GENTLEMEN'S SUPERYACHT.

A bespoke and beautiful yacht designed in collaboration with Studio F.A. Porsche, the 35m (115ft) GTT 115 blends comfortable high-speed cruising with transatlantic range.

Featuring hybrid propulsion, Hull Vane and an exclusively designed four-fin stabilisation system, she embraces advanced technology for super-efficient performance and top cruising comfort.

Spacious guest areas with generous ceiling heights of 2.15 m (over 7ft), as well as a massive and versatile sundeck, creates a very special onboard experience. Only seven editions of the GTT 115 will be built, making her a truly exclusive collector's item.



GTT 115

LIMITED EDITION OF 7



Rhodium Silver Metallic



GTT 115

LIMITED EDITION OF 7

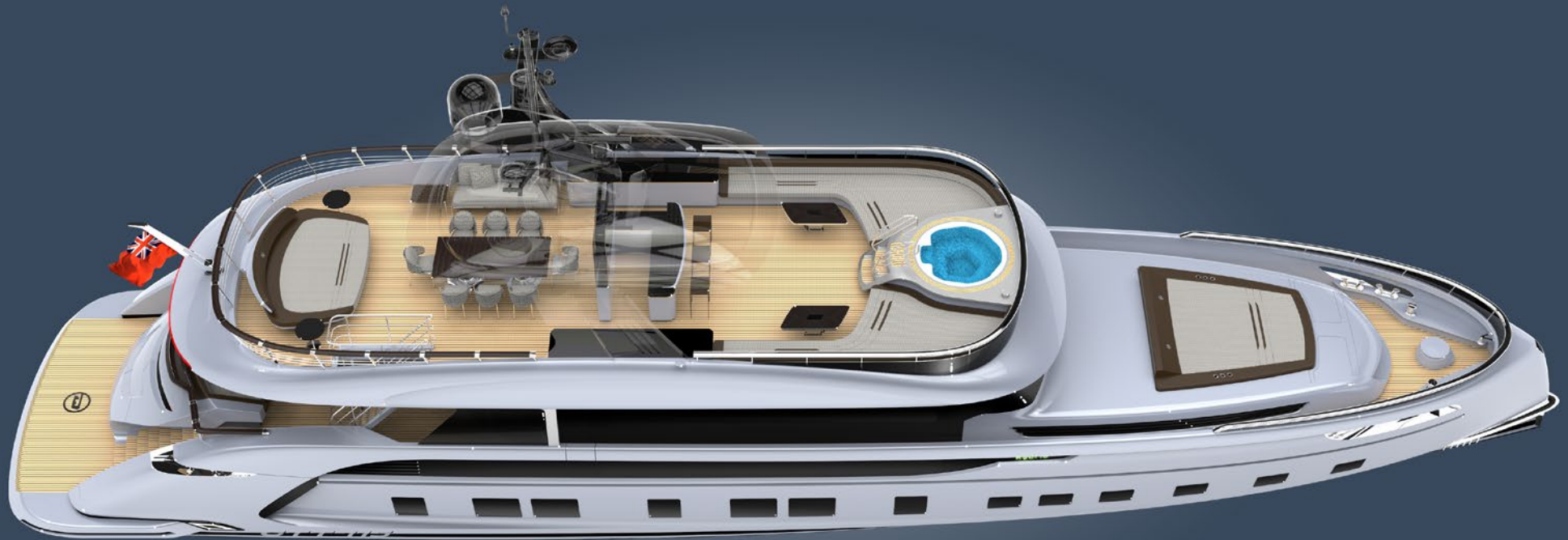


Carrara White Metallic



GTT 115

LIMITED EDITION OF 7



GTT 115

LIMITED EDITION OF 7



KEY FEATURES

GTT 115

LIMITED EDITION OF 7

1 Tributo **PORSCHE**

Studio F.A. Porsche created exclusive exteriors with the Porsche DNA. GTT 115 features the carmaker's signature elements like Targa-style mullions or transom in line with the futuristic Mission E concept study. Available in «Carrara White», «Rhodium Silver», «Chalk» or special «Monte-Carlo Blue» from Porsche line exterior colours.



Design by **STUDIO F·A·PORSCHE**



KEY FEATURES

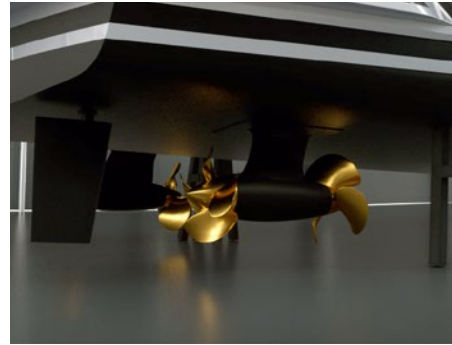
GTT 115

LIMITED EDITION OF 7



2 Hull

Drawn by the famous Dutch naval architects Vripack, the GTT 115 unique hull features a round-bilge shape for remarkably low resistance and low fuel consumption, while still being capable of high speeds. The design decreases vertical accelerations in the hull, which translates into a far more comfortable motion when sailing. The avant-garde bow shape with a vertical stem maximises the waterline length, enhancing performance even more. To keep spray levels low, an integrated spray rail deflects water hitting the bow area. Built entirely from marine grade aluminium, the GTT 115 hull guarantees unparalleled comfort and safe operation for more than 25 years.



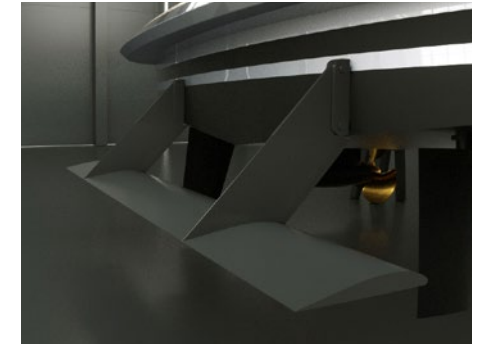
3 Propulsion

Fortjes pods are much more efficient than any system using conventional shafts and propellers. Their positioning outside the hull also means greatly reduced noise and vibration levels, as well as lower emissions. The pods use counter-rotating propellers linked via a compact gearbox to the main engines, reducing engine room space requirements by nearly 18%, which means more accommodation for you and your guests. Built in Germany, Fortjes pods are the perfect compliment to the efficient GTT 115 hull form.



4 Stabilisation system (option)

Swedish leading specialists Humphree created a custom stabilisation system using 4 cutting-edge electric stabilisers and 4 interceptors. The very efficient system underway reduces roll by up to 85%, while enhancing stability and course keeping. At anchor, 4 fins with a large total area cut roll by up to 60%. Electric stabilisers are far quieter, more reactive, take up less space and are more power efficient than their hydraulic counterparts. With no hydraulic systems running through the yacht, there is also no risk of interior damage following a hydraulic system failure.



5 Hull Vane® (option)

The Hull Vane® is a patented fixed foil located below the stern of a ship. Developed by renowned Dutch naval architects Van Oossanen it influences the stern wave pattern and creates hydrodynamic lift, which is partially oriented forward. This innovation leads to significant reduction of the hull's resistance, which in turn enables the installation of much smaller engines, fuel savings and longer range. The Hull Vane® also improves stability under way and at anchor, while reducing both pitching and yawing motions.



KEY FEATURES

GTT 115

LIMITED EDITION OF 7



6 Sundeck

The huge, 95m² (1,022sq/ft) sundeck is bigger than those found on much larger yachts, and has been created to allow maximum functionality. It has been carefully designed with four versatile zones: an aft sunbathing area; an alfresco dining area with 75-inch home theatre screen; a bar and barbecue zone; and a forward pool with sunbathing area. Deck furniture is Minotti outdoor collection, while deck cushions are fabric upholstered with a classic Pepita houndstooth pattern similar to the latest Porsche 991 R edition.



7 Variable speed generators & hybrid power plant (option)

The innovative Fischer Panda iSeries generators use variable speed technology, which allows the speed of the engine to be adjusted according to the electrical load and power consumed. Variable speed generators have much cleaner emissions, lower fuel consumption and are more economical to run. On the GTT 115, generators are smartly placed in the special bow compartment to avoid any noise at night or fumes when swimming off the stern.

With the main engines switched off, the generators power two ultra-compact 20 kW electric motors allowing the yacht to reach 6 knots in complete silence for an unlimited period of time (option).



8 Glass

The GTT 115 features next-generation laminated XIR glass that allows maximum light transmission, while keeping solar heat gain at bay. Harmful UV rays are almost completely blocked, and heat transmission reduced by 60%. The result is an interior that offers the wide panoramas of large windows without the penalty of heat build-up. This means significantly reduced air-conditioning loads and therefore lower running costs. The glass manufacturer is Isoclima, an Italian high-tech company that also supplies glass for luxury automobiles such as Bentley, McLaren, Mercedes and BMW.



9 Forward garage

Unusual for a yacht of this size, the GTT 115 has a forward garage that allows the deployment of a 16-foot tender and jet-ski at any time, even when docked in port. It also provides great storage capacity far away from the guest areas.



GTT 115

LIMITED EDITION OF 7



GTT 115
LIMITED EDITION OF 7



GTT 115
LIMITED EDITION OF 7



MAIN SPEC

GTT 115
LIMITED EDITION OF 7



| | |
|-----------------|--------------------------------|
| Length overall: | 35 m / 115' |
| Beam: | 7.1 m / 23'3" |
| Draft: | 1.45 m / 4'9" |
| Material: | Full aluminium, 5083 |
| Hull type: | Round bilge, fast displacement |
| Tonnage: | 198 GT |

| | |
|---------------|--|
| Main engines: | 2x MAN V12-1650, 1,213 kW 2x e-motors, 20kW |
| Propulsion: | 2x Fortjes 5000 pods |
| Generators: | 2x 45 kW, 1x 25 kW, variable speed Fischer Panda |
| Stabilisers: | 4x Humphree, electrically driven, zero-speed fuction |
| Max speed: | 21 knots |
| Range: | 3,400 nm @ 10 knots |

| | |
|-----------------|-------------------------------|
| Fuel: | 24,000 l / 6,340 US gallons |
| Fresh Water: | 4,000 l / 1,057 US gallons |
| Grey and Black: | 2,000 l / 528 US gallons |
| Guests: | 6 in 3 cabins / 8 in 4 cabins |
| Crew: | 6 in 3 cabins |

| | |
|------------|-------------------------------------|
| Class: | RINA commercial, LY3 compliant |
| Notations: | RINA Comfort Class, RINA Green Star |

| | |
|---------------------|---------------------|
| Naval architecture: | Vripack |
| Exterior design: | Studio F.A. Porsche |
| Interior design: | Studio F.A. Porsche |



STRINGENT STANDARDS

GTT 115
LIMITED EDITION OF 7

In order to create a perfect yacht, from the outset Dynamiq decided to comply with the strictest requirements for comfort and safety. Every Dynamiq yacht is built in accordance with the latest Large Yacht Code (LY3) commercial regulations. This not only makes them ultra safe, but also means they can be chartered to provide an income for their owners.

Dynamiq and its partners are deeply aware of the need for sustainability. We strongly believe that eco-friendly yachts are a requirement for today's owners and their guests. That is why our yachts feature fuel-efficient hulls and reduced air-conditioning loads thanks to special XIR laminated glass.

We are genuinely committed to protecting the world's oceans, coastlines and the global ecology by reducing fuel consumption and emissions through innovative waste management solutions. All Dynamiq yachts are designed and built to meet the strict environmental standards of RINA's Green Star Plus notation.

Moreover, intensive research into reducing sound and vibration and the use of modern insulation materials create a near silent yacht with exceptional acoustic privacy between cabins. These elevated levels of comfort for passengers and crew have been rewarded with RINA's prestigious Comfort Class notation.

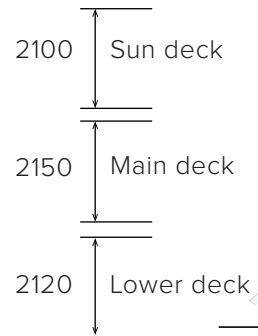


DECK PLANS

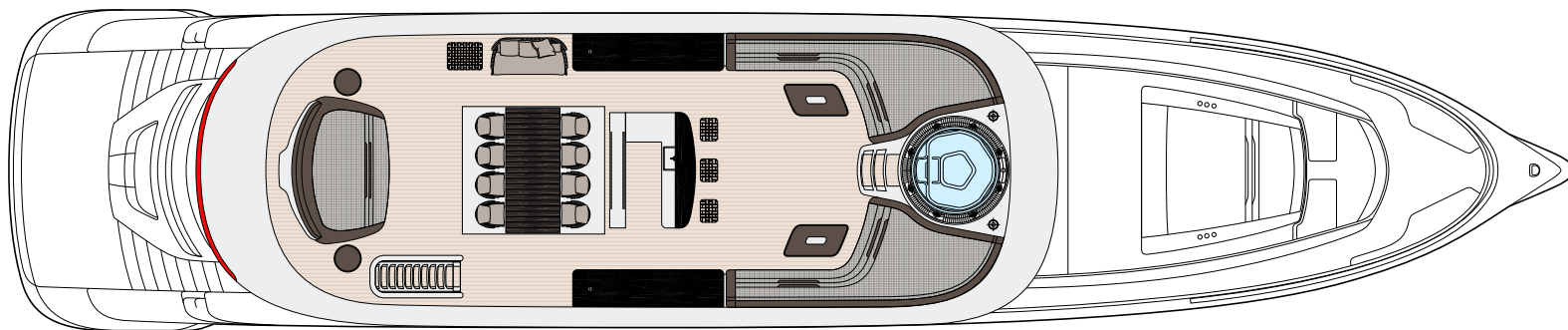
GTT 115

LIMITED EDITION OF 7

Interior deck heights



Profile



Sun deck

This drawing is the property of Dynamiq Yachts SARL and is not to be modified, used or reproduced in whole or part without written permission.

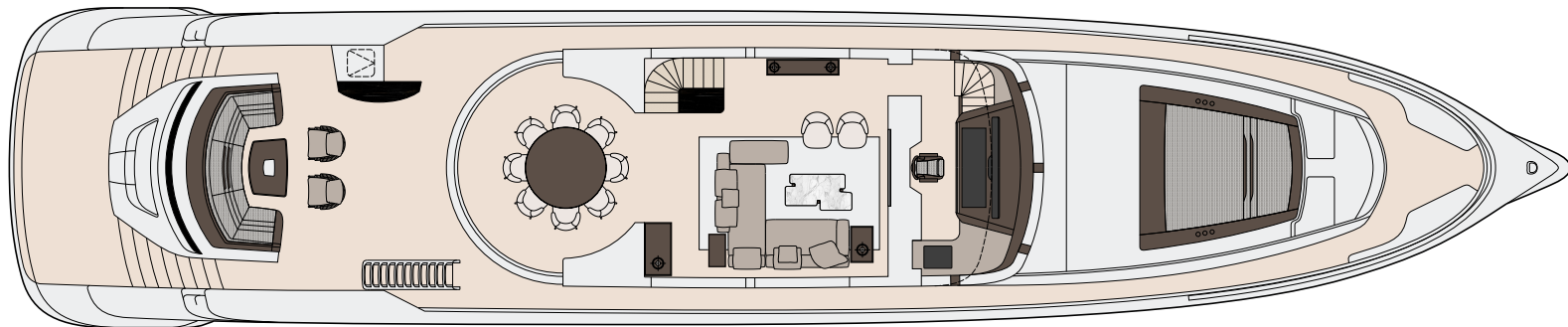


DECK PLANS

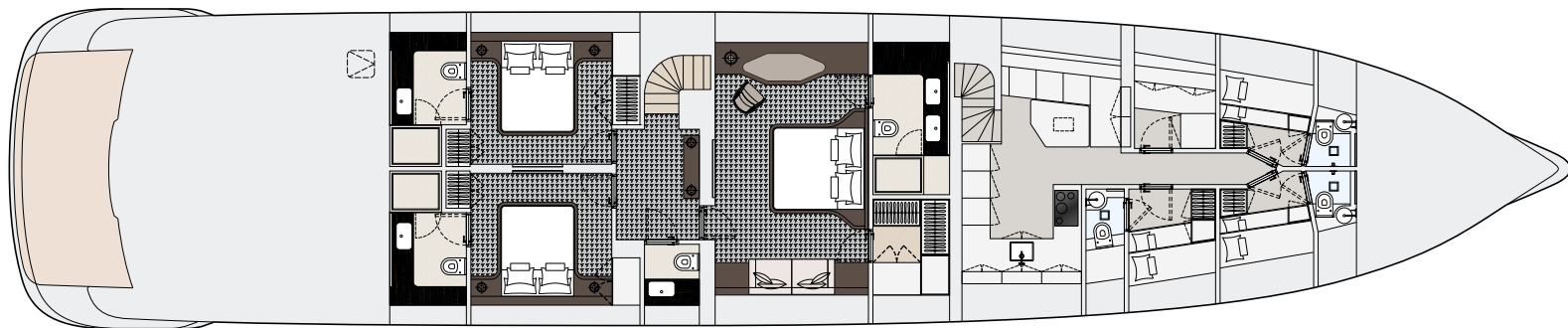
3 cabins version

GTT 115

LIMITED EDITION OF 7



Main deck



Lower deck

This drawing is the property of Dynamiq Yachts SARL and is not to be modified, used or reproduced in whole or part without written permission.

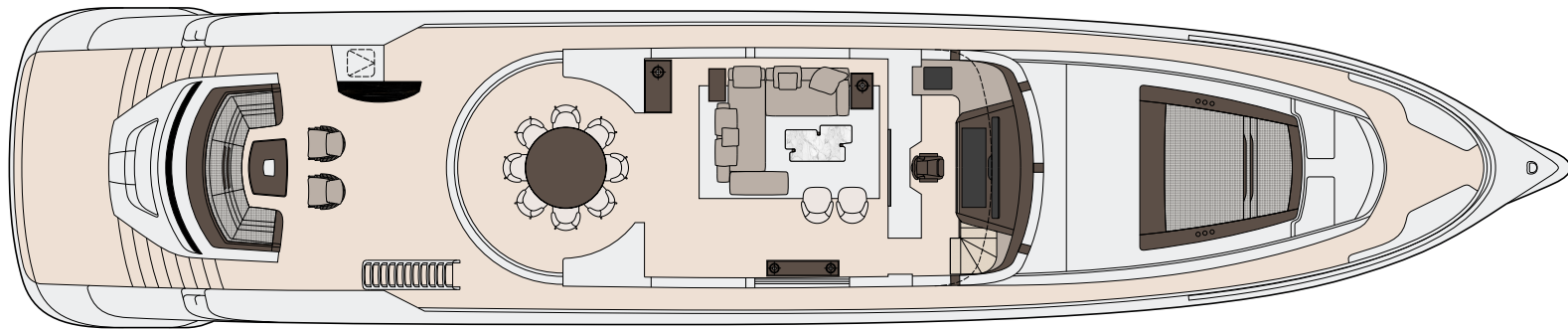


DECK PLANS

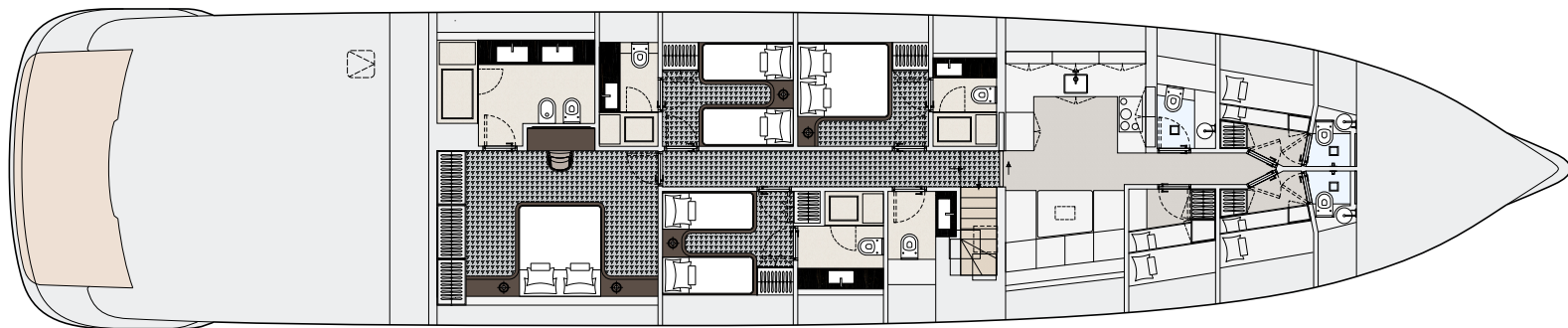
4 cabins version

GTT 115

LIMITED EDITION OF 7



Main deck



Lower deck

This drawing is the property of Dynamiq Yachts SARL and is not to be modified, used or reproduced in whole or part without written permission.



PRICE, OPTIONS & PAYMENT TERMS

GTT 115
LIMITED EDITION OF 7

BASE PRICE:

€ 12,500,000

OPTIONS*:

| | | |
|--------------------------|---|-----------|
| <input type="checkbox"/> | Sport package | € 250,000 |
| <input type="checkbox"/> | Hybrid package | € 224,000 |
| <input type="checkbox"/> | "Stabilisation Plus" package | € 73,000 |
| <input type="checkbox"/> | Silent package | € 115,000 |
| <input type="checkbox"/> | Hull Vane | € 152,000 |
| <input type="checkbox"/> | Minotti package | € 270,000 |
| <input type="checkbox"/> | Bowers & Wilkins package | € 39,000 |
| <input type="checkbox"/> | Heated bathroom floors | € 17,500 |
| <input type="checkbox"/> | Fine marbles in luxury areas | € 64,000 |
| <input type="checkbox"/> | Bed linen, bath and deck towels by Pratesi | € 45,000 |
| <input type="checkbox"/> | Interior scent diffusion | € 4,500 |
| <input type="checkbox"/> | Sundeck cinema | € 10,000 |
| <input type="checkbox"/> | Crew call buttons | € 8,000 |
| <input type="checkbox"/> | Miele electric BBQ on sundeck | € 3,500 |
| <input type="checkbox"/> | Ice dispenser and fridge in sun deck bar | € 8,000 |
| <input type="checkbox"/> | 2 x Miele wine coolers on sundeck | € 9,000 |
| <input type="checkbox"/> | Forward sunpad on main deck | € 9,100 |
| <input type="checkbox"/> | Panasonic bow camera | € 4,500 |
| <input type="checkbox"/> | Sundeck TV wall & bar | € 55,000 |
| <input type="checkbox"/> | Sundeck pool Riviera Wave 255 Public | € 29,900 |
| <input type="checkbox"/> | 9 Underwater lights | € 24,000 |
| <input type="checkbox"/> | VSAT Intellian V60 | € 35,000 |
| <input type="checkbox"/> | "All weather" package for main deck and sun deck (IR heating) | € 9,500 |

PAYMENT TERMS:

| | |
|-----------------------------|-----|
| Contract signature | 10% |
| Keel laying | 25% |
| Main engines installed | 25% |
| Interior installation start | 25% |
| Launch | 10% |
| Delivery | 5% |

BUILD TIME:

15 months

* More options are available at bedynamiq.com



WELCOME TO THE NEXT-GENERATION WORLD

Dynamiq is a Monaco-based builder of superyachts with unique functionality. Using leading-edge technology and elaborate hydrodynamic research, Dynamiq has created a family of all-aluminium yachts that combine the 20-knot-plus maximum speeds of sport cruisers with the comfort and 3,000-mile range of displacement vessels. We call this new yacht category Gran Turismo Transatlantic, or GTT for short.

The brand was started in 2011 by experienced yacht broker and designer Sergei Dobroserdov, who assembled a “dream team” of world thinkers, designers and naval architects to design and fine-tune a new concept in yachting.

Dynamiq is also the first company in the superyacht industry to introduce an Online Configurator, allowing our yachts to be easily and transparently customised down to the last detail.

Our yachts are built in a modern facility in Viareggio on Italy’s Tuscan coast under strict supervision and meticulous quality control.

GTT 115
LIMITED EDITION OF 7



DYNAMIQ RANGE 2017-2018



| Model | <i>GTM 90</i> | <i>GTT 115</i> | <i>GTT 130</i> | <i>GTT 165</i> |
|--------------------------|---------------------------------|-------------------------------|-----------------------------|--------------------------------|
| LOA | 27.7 m / 90' | 35 m / 115' | 40 m / 131'3 | 50 m / 165' |
| Beam | 7 m / 22'11" | 7.1 m / 23'3" | 8.2 m / 26'11" | 8.7 m / 28'6" |
| Speed max. | 24 knots | 21 knots | 21 knots | 21 knots |
| Engines | 3x Volvo Penta IPS950 533 kW | 2x MAN V12-1650 1,213 kW | 2x MAN V12-1800 1,324 kW | 2 x MTU 10V2000M94 1,193 kW |
| Guest / cabins | 8 in 4 cabins | 6 in 3 cabins / 8 in 4 cabins | 10 in 5 cabins | 10 in 5 cabins |
| Crew / cabins | 4 in 2 cabins | 6 in 3 cabins | 6 in 3 cabins | 8 in 4 cabins |
| Construction time | 17 months | 15 months | 21 months | 22 months |
| Base price | € 7,250,000 | € 12,500,000 | € 15,900,000 | € 23,900,000 |



CONTACT SALES BROKER
Lomond Yachts
sales@lomondyachts.com

Telephone:
UK 0800 644 4229
USA +1 800 292 3147

LOMONDYACHTS.COM

