



STATE OF GRACE



2013 PERINI NAVI

LOA:	129' 4" (39.4m)	Build/Model Year:	2013 / 2013
Beam:	30' (9.13m)	Builder:	PERINI NAVI
Min Draft:	11' 6" (3.5m)	Type:	Sloop
Max Draft:	29' 11" (9.1m)	Price:	€11,750,000 EUR
Speed:	Cruising 10.5 Knots Max 14 Knots	Location:	Palma de Mallorca, Spain

VAT Paid:

Generated On 9/10/2022 7:38 PM by Douglas McFarlane

Lomond Yachts
Admiralty Way
Teddington
Richmond-Upon-Thames England
TW11 0NL United Kingdom

Douglas McFarlane
P: +44 2036527453
M: +44 7946414440
douglas@lomondyachts.com
www.lomondyachts.com

STATE OF GRACE



Additional Specifications For STATE OF GRACE:

LOA:	129' 4" (39.4m)	Delivery/Model	2013
Beam:	30' (9.13m)	Year:	
Min Draft:	11' 6" (3.5m)	Year Built:	2013
Max Draft:	29' 11" (9.1m)	Refit Year:	2020
Hull Material:	Aluminum	Builder:	PERINI NAVI
Superstructure:	Aluminum	Type:	Sloop
Hull Designer:	Ron Holland Design / Perini Navi	Engines:	670 HP,Single, Inboard, CAT, C18,
Deck Material:	Teak	Staterooms:	4
Tonnage:	254	Sleeps:	9
Range At Cruise	3000	Crew Quarters:	3
Speed:		Classifications:	American Bureau of Shipping
Speed:	Cruising 10.5 Knots	MCA: Yes	ISM:
	Max 14 Knots		
Int Designer:	Perini Navi		
Ext Designer:	Perini Navi		
Fuel Capacity:	14400 L (3804.08 Gal)		
Water Capacity:	5000 L (1320.86 Gal)		
Flag:	Isle of Man		
Location:	Palma de Mallorca, Spain		
Price:	€11,750,000 EUR		

Generated On 9/10/2022 7:38 PM by Douglas McFarlane

Lomond Yachts
Admiralty Way
Teddington
Richmond-Upon-Thames England
TW11 0NL United Kingdom

Douglas McFarlane
P: +44 2036527453
M: +44 7946414440
douglas@lomondyachts.com
www.lomondyachts.com

STATE OF GRACE



DETAILED DESCRIPTION

1. MAIN CHARACTERISTICS

TYPE	Sloop Sailing Yacht
HULL NO.	C.2180
BUILDER	Perini Navi
NAVAL ARCHITECT	Ron Holland Design / Perini Navi
EXTERIOR DESIGN	Perini Navi
INTERIOR DESIGN	Perini Navi
YEAR	2013
REFIT	2020
CLASSIFICATION	ABS: MCA + A1, Commercial Yachting Service, Malta Cross AMS, MCA LY2 Short Range
CONSTRUCTION	Aluminium Hull & Superstructure, Teak Decks
KEEL CONFIGURATION	Centre board with fixed ballast of 17 tons
CREW	6
FLAG	Isle of Man
ENGINE	1 x 500kW / 670Hp CAT C18
GT	254
DISPLACEMENT	220 max

2. DIMENSIONS

LOA	39.40m / 129'3"
LWL	34.10m / 111'
BEAM	9.13m / 31'
DRAFT	9.10m / 29' 10" max 3.50m / 11'6" min

3. SPEED & RANGE UNDER POWER

MAXIMUM SPEED	14 knots
CRUISING SPEED	10.5 knots
ECONOMICAL SPEED	7 knots
RANGE	3,000nm @ 7 knots

4. CAPACITIES

Generated On 9/10/2022 7:38 PM by Douglas McFarlane

Lomond Yachts
Admiralty Way
Teddington
Richmond-Upon-Thames England
TW11 0NL United Kingdom

Douglas McFarlane
P: +44 2036527453
M: +44 7946414440
douglas@lomondyachts.com
www.lomondyachts.com

STATE OF GRACE



ACCOMMODATION	8 + 1 x Guests in 4 cabins (1 x Master, 2 x Double, 1 x Twin with Pullman)
CREW	6 x Crew in 3 cabins
FUEL	14,400 litres / 3,800 US gallons
FRESH WATER	5,000 litres / 1,100 US gallons
LUBE OIL	486 litres / 128 US gallons
DIRTY OIL TANK	430 litres / 113 US gallons
GREY / BLACK WATER	1,324 litres / 350 US gallons
BILGE WATER TANK	916 litres / 242 US gallons

5. **ACCOMMODATION**

STATE OF GRACE has a split-level saloon area which offers increased headroom and creates two social areas on the main and lower decks. Her full beam Master Suite offers a large Turkish Hammam steam shower, "Therasage" massage & shiatsu machine and fully equipped gym area with Technogym cross trainer, rowing machine, free weights and exercise bars. Two Queen size double cabins and a further convertible twin cabin with Pullman create accommodation for up to 9 guests in total.

Easy access to the sea, tenders and an extensive array of toys comes courtesy of a fold down transom revealing a large aft swim platform. An intelligent layout with ample relaxation, dining and watersports areas matched with optimized performance make STATE OF GRACE a spacious, comfortable and exciting yacht for any owner.

DIMENSIONS	Total deck area: 258 m ² / 2,777 ft ² Cockpit area: 32 m ² / 344 ft ² Saloon & wheelhouse area: 73 m ² / 786 ft ² Total owner & guest cabin area: 83 m ² / 893 ft ² Total crew area: 54 m ² / 581 ft ² Head room: 205cm in all guest areas
-------------------	---

DINING ROOM	Dining table for 8 x guests 8 x Dining chairs 2 x Double couches 2 x Armchairs 1 x Bench for 4 x guests 3 x Coffee tables 2 x Sub-zero wine cellars, total 40 x bottles Concealed TV
--------------------	---

UPPER SALOON	1 x 6-seater sofa
---------------------	-------------------

Generated On 9/10/2022 7:38 PM by Douglas McFarlane



1 x Carbon designer chair
2 x Chairs
Coffee table
Concealed TV
Day head portside forward

MASTER SUITE

1 x King bed
En suite with shower
Sanitary
2 x Night tables
TV flat screen
Large bulkhead wardrobe with hanging lockers
and drawer
Office desk with one chair
1 x Pull-out massage bed
Digital safe

OWNER'S GYM

Rowing machine "concept 2 Model E"
Cross trainer "synchro Technogym 700iE"

AFT STARBOARD CABIN

1 x Queen bed
En-suite shower
1 x Pullman
Under the bed storage
Night table with drawer
1 x wardrobe, drawers, shelves and mirror
TV LCD

FWD STARBOARD CABIN

1 x Queen convertible to Twin bed
En suite shower
1 x Pullman
Under bed storage
Night table with drawer
1 x wardrobe, drawers, shelves and mirror
TV LCD

**FORWARD PORTSIDE
CABIN**

1 x Queen bed
En suite shower

Generated On 9/10/2022 7:38 PM by Douglas McFarlane



Under the bed storage
2 x Night table with drawer
1 x Wardrobe, drawers and shelves and mirror
TV LCD

CREW MESS U-shaped dining table and seating
Dishwasher
Small fridge

CAPTAIN'S CABINS 1 x Double bed
1 x Single bed
En suite shower
Drawers under the bed
1 x Wardrobe, drawers and shelves and mirror
TV LCD
Digital safe

CREW CABINS 2 x Bunk bedded cabins
Each with shower and toilet
Each with Stereo and DVD player
Each with clothes hanging wardrobe

6. **MECHANICAL EQUIPMENT**

ENGINE 1 x CAT C18 670Hp / 500 kW @ 2,100 rpm
GEARBOXES Hundested CPG- 32
ELASTIC COUPLING Vulkan
STEERING SYSTEM Marsili Electro-hydraulic
PROPELLER & SHAFT Hundested 4-blade CP in NI-AOL Bronze S/S shaft, brake on water lubricated bushing
THRUSTERS 2 x 75Hp retractable Hundested (hydraulics powered via PTO on gearbox)
GENERATORS 2 x 68 kW Caterpillar C4.4 380V 50Hz, 1,500 rpm
EMERGENCY GENERATORS 1 x 4kW 3,000rpm 380V 50Hz
SHORE POWER Asea 63kVA frequency converter, seamless transfer capability
OUTPUT 380V/ 50Hz 3-Phase
220V / 50Hz single phase - lighting & low power machinery
24V DC - emergency lighting, electronics instruments & alarms
BATTERIES 1 x Gel 24V 400A Services
1 x Gel 24v 400A Emergency lights

Generated On 9/10/2022 7:38 PM by Douglas McFarlane

Lomond Yachts
Admiralty Way
Teddington
Richmond-Upon-Thames England
TW11 0NL United Kingdom

Douglas McFarlane
P: +44 2036527453
M: +44 7946414440
douglas@lomondyachts.com
www.lomondyachts.com

STATE OF GRACE



FIRE & EMERGENCY PUMP	1 x Gel 24v 200A Main engine starting 2 x Gel 24v 150A Generator starting 1 x Gel 12v 100A Emergency Generator starting 2 x 380 CV Gianceschi 470 l/m bilge & fire pump 1 x Diesel bilge & fire pump
BILGE PUMP	8 x 24V Automatic
AIR CONDITIONING	Condaria
BOILERS	2 x 100 l with 2 x heating 2.5kW each
WATERMAKER	2 x Idromar 125 lph
SEWAGE SYSTEM	Selmar (17-pax rated)
OILY WATER SEPARATOR	Filtering system

7. **SAILS & RIGGING**

SAILS	Systems designed & built by Perini Navi, handled semi-automatically Operation via 1 x console or a joy stick Monitoring system allows continuing verification of sails systems status
SAIL DIMENSIONS	Total sail area upwind: 893 m2 / 9,612 ft2 Main sai:l 378 m2 / 4,069 ft2 Reacher: 515 m2 / 5,543 ft2 Jib: 301 m2 / 3,240 ft2 MPS: 900 m2 / 9,688 ft2
SAILS SET	Doyle full batten main with 2 x reefs: 370 m2 (2016) Doyle tri-radial blade with 2 x reefs: 300 m2 (2020) Doyle tri radial carbon spectra reacher: 510 m2 (2016) Doyle Asymmetric (A2) with sock & bucket: 900 m2 North - small delivery Mainsail (2020)
MAST & RIGGING	Southern Spars High Modulus carbon mast & boom Height above DWL: 51m (170 ft) Rigging (Standing): EC6 carbon fibre Carbon fibre mainsail furling boom Bamar furlers for jibs and reacher New generation Perini Navi captive reel winches Rondal carbon hatches Carbon Fibre tender lifting pole with captive winch

Generated On 9/10/2022 7:38 PM by Douglas McFarlane

Lomond Yachts
Admiralty Way
Teddington
Richmond-Upon-Thames England
TW11 0NL United Kingdom

Douglas McFarlane
P: +44 2036527453
M: +44 7946414440
douglas@lomondyachts.com
www.lomondyachts.com

STATE OF GRACE



Navtec double acting hydraulic vang
Navtec hydraulic backstay

8. NAVIGATION EQUIPMENT

AUTOPILOT	1 x A&T GPD Pilot Display (wheelhouse) 1 x B & G H3000 GPD Pilot Display (external) 1 x B & G Rudder (steering)
RADAR / CHART PLOTTER	Hatteland-Mini CPU w/pa 2.4G Processor with 17" monitor (wheelhouse) Furuno Blackbox Navnet 3D SXGA Chartplotter (wheelhouse) Furuno Black Box Navnet 3D SXGA Colour Chartplotter (external) 12.9" iPad Pro with Navionics back up
HORN	Tyfon MKT 75/660
L.R.I.T	1 x Sailor TT 3000 LT
NAVTEX SYSTEM	1 x Furuno LCD
AIS	1 x Furuno FA 150 1 x Sailor SART 2
FLEET BROAD BAND	1 x VSat
EPIRB	2 x Sailor SGE406
COMPASSES	B&G H3000 Halcyon Gyro Furuno rate compensated heading sensor Hein & Oetting Venus Magnetic compass
DEPTH SOUNDER	Furuno Network Sounder, Navnet Fishfinder
GPS	Furuno GP150
WIND INSTRUMENTS	1 x B & G 3000 Hercules Pack system complete with 1 x Heel, 1 x Standard 213 masthead, 1 x Depth, 1 x Paddle wheel
WHEELHOUSE	1 x Analogue wind direction 1 x Analogue wind speed indicator 1 x Analogue magnified instrument 1 x Analogue boat speed instrument 2 x GFDs
EXTERNAL	4 x B&G Triton multi-display (2020) 1 x B&G GFDs
CREW AREA	2 x Jumbo 20.20 1 x GFD, crew mess

Generated On 9/10/2022 7:38 PM by Douglas McFarlane



1 x GFD in captain's cabin

9. COMMUNICATION EQUIPMENT

GMDSS RADIO	1 x Sailor TT 3000EB 2 x Sailor SP3520 portable VHF
VHF RADIO TELEPHONE	2 x Sailor 6215 & 6222 DSC VHF (wheelhouse) 1 x sailor C4901 Control Handset (wheelhouse) 1 x Sailor C4901 Control Handset VHF A1 (external) 1 x Sailor C4901 Control handset/speaker (crew mess)
INTERNET CONNECTIONS	2 x Sailor 250 Broad Band 1 x Cobham 800 Antenna 1 x Pepwave Cell terminal
TELEPHONE EXCHANGE	Panasonic KX-TDA 100 9 x KX-DT343 telephone unit 8 x KX-TDA0142 4 channel DECT Base Station 6 x KX-TCA256 DECT Handset 1 x Watertight stainless steel-cased door phone for use either side at side boarding or gangway boarding
ETHERNET LAN NETWORK	Dell PE860 Power Edge Server Computer

10. DECK EQUIPMENT

ANCHOR WINDLASS SYSTEM	Nani with 2 x hydraulic hinging anchor bowsprits
AFT WARPING CAPSTANS	Harken 1120 3-speed
ANCHORS	2 x Stainless steel CQR 182 Kg 16mm chains
PASSERELLE	Pincraft
BOARDING LADDER STBD	Pincraft

11. ENTERTAINMENT EQUIPMENT

AV SYSTEM	Audio visual system based around Control 4 Processors & remote controls
MAIN SALOON	Panasonic 42' Plasma display TV 6000 Kaleidescape system Samsung blue ray BP-P1500 disc player Airplay control with Chromecast system

Generated On 9/10/2022 7:38 PM by Douglas McFarlane

Lomond Yachts
Admiralty Way
Teddington
Richmond-Upon-Thames England
TW11 0NL United Kingdom

Douglas McFarlane
P: +44 2036527453
M: +44 7946414440
douglas@lomondyachts.com
www.lomondyachts.com

STATE OF GRACE



LOWER SALOON	Panasonic 42' Plasma display TV 6000 Kaleidescape system Airplay
OWNER'S CABIN	Panasonic 42' Plasma TV 6000 Kaleidescape system Samsung blue ray BP-P1500 disc player Airplay control & Apple TV
OWNER'S STUDY	Speakers & Creston wall mount LCD controller
GYM	15'' LCD TV with speakers
STARBOARD CABIN	Sharp 20'' Aquos LCD TV 300 Kaleidescape system
PORTSIDE CABIN	Sharp 32'' Aquos LCD TV 300 Kaleidescape system Bluetooth & Airplay
STARBOARD FWD CABIN	Sharp 32'' Aquos LCD TV 300 Kaleidescape system Bluetooth & Airplay
CREW MESS	Philips 15''LCD Kaleidescape
CAPTAIN'S CABIN	Philips 15''LCD
CREW CABINS	Stereo & speakers
SATELLITE TV	Seatel Cobham VSTA (new 2016) with independent receivers for the Master cabin, upper & lower salon
BOW SUNPAD	Control 4 Deck tablet 2 x Speakers Promar
AFT COCKPIT	1 x Airplay control with Chromecast system

Generated On 9/10/2022 7:38 PM by Douglas McFarlane



Bluetooth through the Upper salon

2 x Promar speakers

Panasonic 40'' TV / LCD

HELM POD

2 x Promar speakers

12. GALLEY & LAUNDRY EQUIPMENT

GALLEY

1 x Industrial 6-burner stove

1 x Miele oven M399B

1 x Miele Jubilee SC dishwasher

1 x Elitech Fridge

1 x ISE macerator

1 x Espresso machine

Range hood variable speed stainless steel

2 x Microwave ovens

REFRIGERATION / FREEZER

1 x Custom galley 1,300 litres

1 x Deep freezer

1 x Custom aft cockpit 150 litres

1 x Custom bilge storage 1,000 litres

1 x Garbage locker in forepeak

LAUNDRY

2 x 6kg Professional Miele washing machines

2 x 6kg Marine driers

1 x World hinged iron board

1 x Flatwork ironer

Laundry connected to crew mess

CREW MESS

1 x Fridge

Trash compactor

Sink station

1 x Dishwasher

VHF Remote

CCTV screen

Flush mounted access to under floor deep freeze

13. SECURITY & SAFETY EQUIPMENT

Generated On 9/10/2022 7:38 PM by Douglas McFarlane



SAFETY	Compliant with MCA rules for safety equipment: 2 x Life-rafts (8-people) 1 x Life raft (6-people) Life rings ABS and MCA approved life jackets
FIRE FIGHTING	FM 200 plant Fire extinguisher Fire crew Equipment
SECURITY	CCTV2: Speed Dome PTZ (spreaders) 1 x Speed Dome PTZ (engine room) Both connected to 17' LCD in Wheelhouse & crew mess

14. **TENDERS & WATERSPORTS EQUIPMENT**

TENDER	1 x 5.50m Pascoe with inboard Yanmar 150Hp RIB (refitted 2020)
WATERSPORTS	2 x Stand-up paddleboards Water skis (adult & children) Inflatable Yacht Pool
DIVING / FISHING	Snorkelling gear Full deep-sea fishing equipment (fighting chair, multiple rod, reels & tackle)

15. **REFIT NOTES**

WINTER 2019-2020

- Main engine top end overhaul
- 2 x New Generators
- Rig out, checked & polished
- Jib/Blade sail new July 2020
- Tanks pumped out, pressure washed & cleaned October 2020
- Teak decks 90% re-caulked July 2020

16. **COMMENTS**

Generated On 9/10/2022 7:38 PM by Douglas McFarlane

Lomond Yachts
Admiralty Way
Teddington
Richmond-Upon-Thames England
TW11 0NL United Kingdom

Douglas McFarlane
P: +44 2036527453
M: +44 7946414440
douglas@lomondyachts.com
www.lomondyachts.com

STATE OF GRACE



Finalist for six industry awards, STATE OF GRACE is the result of a winning collaboration with Ron Holland Design and the bespoke tailoring of Perini Navi to provide a high-performance world cruising contemporary sloop for an experienced yachtsman driven by cutting-edge sailing technology. The lifting keel allows the yacht to get much closer to shore in anchorages compared to other similar sized yachts.

Her aluminium hull and superstructure give a displacement of up to 220 tons, new generation Perini Navi captive reel winches hold 12 tons, rewinding 35 metres of sheets per minute. She comes complete with Southern Spars carbon Hybrid Modulus mast and boom, EC6+ carbon fibre rigging controlled from the trademark Perini hemi-spherical helm pod (all controllable by one person) and offers exceptional manoeuvrability.

STATE OF GRACE also comes with an outstanding worldwide reputation as a successful charter yacht, offering a new owner an established revenue stream if desired.

KEY FEATURES

- Powerful sailing yacht
- Full beam Master Suite with full en suite and direct access to Gym room
- Accommodating 6 guests in 2 Queen size double cabins and 1 further convertible twin cabin with Pullman bed for a total capacity of 9 guests
- Fully equipped gym area with Technogym cross trainer, rowing machine, free weights and exercise bars
- Perini famed large and comfortable access to the sea via side retractable boarding ladder or large stern platform
- Tenders and an extensive array of toys come courtesy of a fold down transom revealing a large aft swim platform

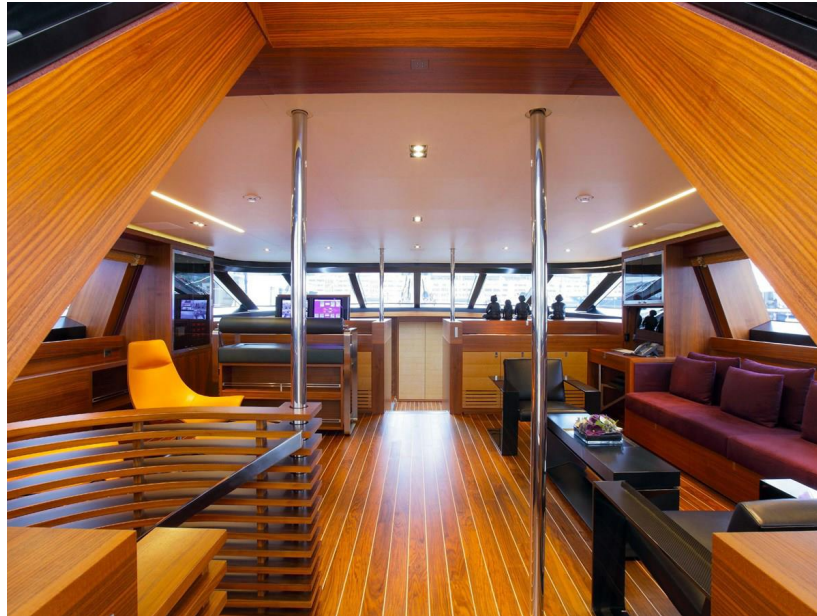


Generated On 9/10/2022 7:38 PM by Douglas McFarlane

Lomond Yachts
Admiralty Way
Teddington
Richmond-Upon-Thames England
TW11 0NL United Kingdom

Douglas McFarlane
P: +44 2036527453
M: +44 7946414440
douglas@lomondyachts.com
www.lomondyachts.com

STATE OF GRACE



Generated On 9/10/2022 7:38 PM by Douglas McFarlane

Lomond Yachts
Admiralty Way
Teddington
Richmond-Upon-Thames England
TW11 0NL United Kingdom

Douglas McFarlane
P: +44 2036527453
M: +44 7946414440
douglas@lomondyachts.com
www.lomondyachts.com

STATE OF GRACE



Generated On 9/10/2022 7:38 PM by Douglas McFarlane

Lomond Yachts
Admiralty Way
Teddington
Richmond-Upon-Thames England
TW11 0NL United Kingdom

Douglas McFarlane
P: +44 2036527453
M: +44 7946414440
douglas@lomondyachts.com
www.lomondyachts.com

STATE OF GRACE



Generated On 9/10/2022 7:38 PM by Douglas McFarlane

Lomond Yachts
Admiralty Way
Teddington
Richmond-Upon-Thames England
TW11 0NL United Kingdom

Douglas McFarlane
P: +44 2036527453
M: +44 7946414440
douglas@lomondyachts.com
www.lomondyachts.com

STATE OF GRACE

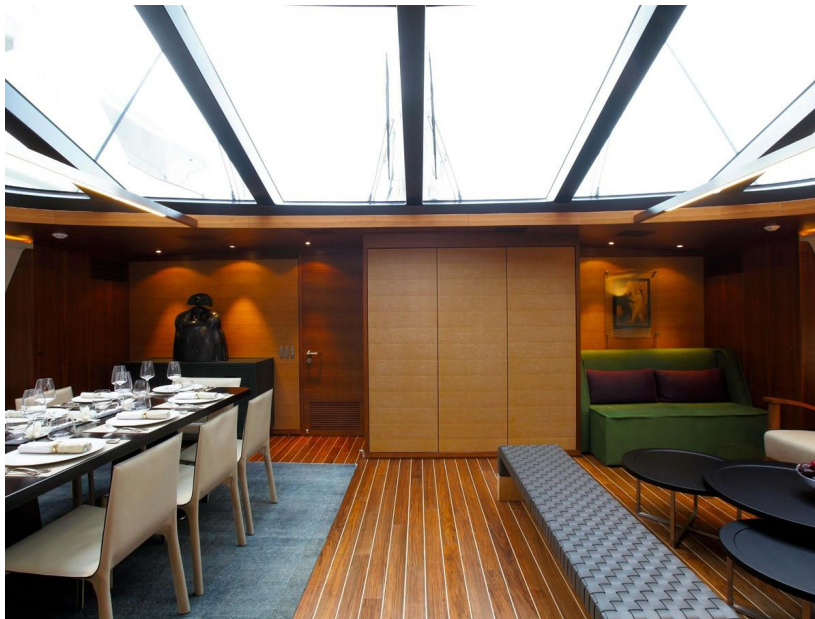


Generated On 9/10/2022 7:38 PM by Douglas McFarlane

Lomond Yachts
Admiralty Way
Teddington
Richmond-Upon-Thames England
TW11 0NL United Kingdom

Douglas McFarlane
P: +44 2036527453
M: +44 7946414440
douglas@lomondyachts.com
www.lomondyachts.com

STATE OF GRACE





Generated On 9/10/2022 7:38 PM by Douglas McFarlane

Lomond Yachts
Admiralty Way
Teddington
Richmond-Upon-Thames England
TW11 0NL United Kingdom

Douglas McFarlane
P: +44 2036527453
M: +44 7946414440
douglas@lomondyachts.com
www.lomondyachts.com

STATE OF GRACE



Generated On 9/10/2022 7:38 PM by Douglas McFarlane

Lomond Yachts
Admiralty Way
Teddington
Richmond-Upon-Thames England
TW11 0NL United Kingdom

Douglas McFarlane
P: +44 2036527453
M: +44 7946414440
douglas@lomondyachts.com
www.lomondyachts.com

STATE OF GRACE

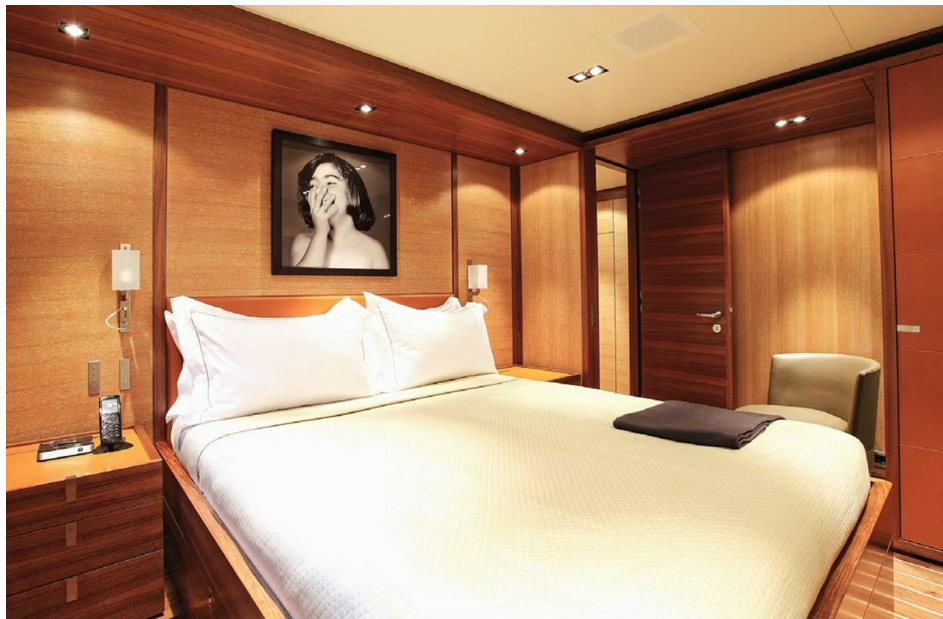


Generated On 9/10/2022 7:38 PM by Douglas McFarlane

Lomond Yachts
Admiralty Way
Teddington
Richmond-Upon-Thames England
TW11 0NL United Kingdom

Douglas McFarlane
P: +44 2036527453
M: +44 7946414440
douglas@lomondyachts.com
www.lomondyachts.com

STATE OF GRACE



Generated On 9/10/2022 7:38 PM by Douglas McFarlane

Lomond Yachts
Admiralty Way
Teddington
Richmond-Upon-Thames England
TW11 0NL United Kingdom

Douglas McFarlane
P: +44 2036527453
M: +44 7946414440
douglas@lomondyachts.com
www.lomondyachts.com

STATE OF GRACE



Generated On 9/10/2022 7:38 PM by Douglas McFarlane

Lomond Yachts
Admiralty Way
Teddington
Richmond-Upon-Thames England
TW11 0NL United Kingdom

Douglas McFarlane
P: +44 2036527453
M: +44 7946414440
douglas@lomondyachts.com
www.lomondyachts.com

STATE OF GRACE



Generated On 9/10/2022 7:38 PM by Douglas McFarlane

Lomond Yachts
Admiralty Way
Teddington
Richmond-Upon-Thames England
TW11 0NL United Kingdom

Douglas McFarlane
P: +44 2036527453
M: +44 7946414440
douglas@lomondyachts.com
www.lomondyachts.com

STATE OF GRACE



Generated On 9/10/2022 7:38 PM by Douglas McFarlane

Lomond Yachts
Admiralty Way
Teddington
Richmond-Upon-Thames England
TW11 0NL United Kingdom

Douglas McFarlane
P: +44 2036527453
M: +44 7946414440
douglas@lomondyachts.com
www.lomondyachts.com

STATE OF GRACE



Generated On 9/10/2022 7:38 PM by Douglas McFarlane

Lomond Yachts
Admiralty Way
Teddington
Richmond-Upon-Thames England
TW11 0NL United Kingdom

Douglas McFarlane
P: +44 2036527453
M: +44 7946414440
douglas@lomondyachts.com
www.lomondyachts.com

STATE OF GRACE



Generated On 9/10/2022 7:38 PM by Douglas McFarlane

Lomond Yachts
Admiralty Way
Teddington
Richmond-Upon-Thames England
TW11 0NL United Kingdom

Douglas McFarlane
P: +44 2036527453
M: +44 7946414440
douglas@lomondyachts.com
www.lomondyachts.com

STATE OF GRACE



Generated On 9/10/2022 7:38 PM by Douglas McFarlane

Lomond Yachts
Admiralty Way
Teddington
Richmond-Upon-Thames England
TW11 0NL United Kingdom

Douglas McFarlane
P: +44 2036527453
M: +44 7946414440
douglas@lomondyachts.com
www.lomondyachts.com

STATE OF GRACE



Generated On 9/10/2022 7:38 PM by Douglas McFarlane

Lomond Yachts
Admiralty Way
Teddington
Richmond-Upon-Thames England
TW11 0NL United Kingdom

Douglas McFarlane
P: +44 2036527453
M: +44 7946414440
douglas@lomondyachts.com
www.lomondyachts.com

STATE OF GRACE

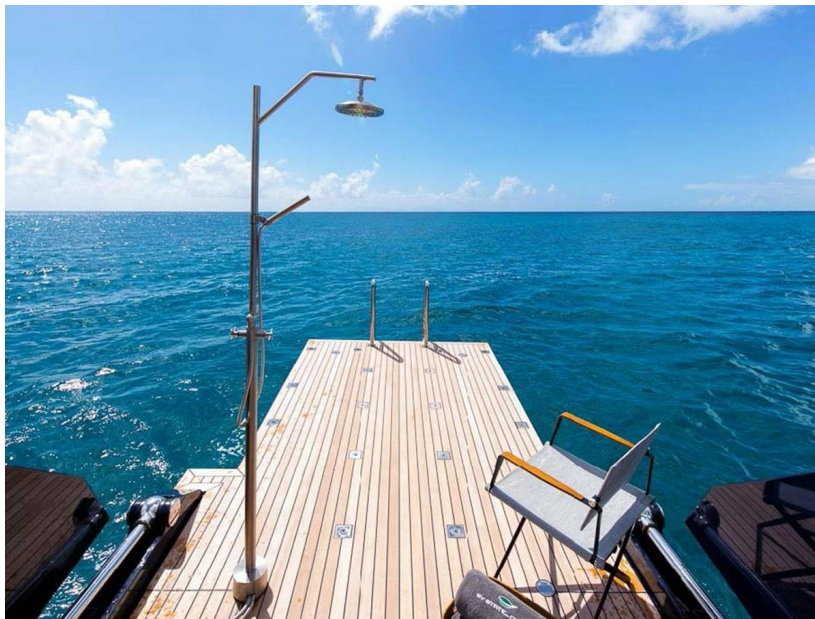


Generated On 9/10/2022 7:38 PM by Douglas McFarlane

Lomond Yachts
Admiralty Way
Teddington
Richmond-Upon-Thames England
TW11 0NL United Kingdom

Douglas McFarlane
P: +44 2036527453
M: +44 7946414440
douglas@lomondyachts.com
www.lomondyachts.com

STATE OF GRACE



Generated On 9/10/2022 7:38 PM by Douglas McFarlane

Lomond Yachts
Admiralty Way
Teddington
Richmond-Upon-Thames England
TW11 0NL United Kingdom

Douglas McFarlane
P: +44 2036527453
M: +44 7946414440
douglas@lomondyachts.com
www.lomondyachts.com

STATE OF GRACE



Generated On 9/10/2022 7:38 PM by Douglas McFarlane

Lomond Yachts
Admiralty Way
Teddington
Richmond-Upon-Thames England
TW11 0NL United Kingdom

Douglas McFarlane
P: +44 2036527453
M: +44 7946414440
douglas@lomondyachts.com
www.lomondyachts.com

STATE OF GRACE



Generated On 9/10/2022 7:38 PM by Douglas McFarlane

Lomond Yachts
Admiralty Way
Teddington
Richmond-Upon-Thames England
TW11 0NL United Kingdom

Douglas McFarlane
P: +44 2036527453
M: +44 7946414440
douglas@lomondyachts.com
www.lomondyachts.com

STATE OF GRACE



Generated On 9/10/2022 7:38 PM by Douglas McFarlane

Lomond Yachts
Admiralty Way
Teddington
Richmond-Upon-Thames England
TW11 0NL United Kingdom

Douglas McFarlane
P: +44 2036527453
M: +44 7946414440
douglas@lomondyachts.com
www.lomondyachts.com

STATE OF GRACE



Generated On 9/10/2022 7:38 PM by Douglas McFarlane

Lomond Yachts
Admiralty Way
Teddington
Richmond-Upon-Thames England
TW11 0NL United Kingdom

Douglas McFarlane
P: +44 2036527453
M: +44 7946414440
douglas@lomondyachts.com
www.lomondyachts.com

STATE OF GRACE



State of Grace Sail Plan



Generated On 9/10/2022 7:38 PM by Douglas McFarlane

Lomond Yachts
Admiralty Way
Teddington
Richmond-Upon-Thames England
TW11 0NL United Kingdom

Douglas McFarlane
P: +44 2036527453
M: +44 7946414440
douglas@lomondyachts.com
www.lomondyachts.com

STATE OF GRACE

State of Grace GA



■ OWNER AND GUEST AREA
■ SALOON
■ CREW AREA

Generated On 9/10/2022 7:38 PM by Douglas McFarlane

Lomond Yachts
 Admiralty Way
 Teddington
 Richmond-Upon-Thames England
 TW11 0NL United Kingdom

Douglas McFarlane
 P: +44 2036527453
 M: +44 7946414440
douglas@lomondyachts.com
www.lomondyachts.com

STATE OF GRACE