



Blush



2007 PERINI NAVI

LOA:	148' 6" (45.26m)	Build/Model Year:	2007 / 2007
Speed:		Builder:	PERINI NAVI
VAT Paid:		Type:	Cruising Sailboat
		Price:	€12,495,000 EUR
		Location:	Monaco, France

Generated On 9/10/2022 7:31 PM by Douglas McFarlane

Lomond Yachts
Admiralty Way
Teddington
Richmond-Upon-Thames England
TW11 0NL United Kingdom

Douglas McFarlane
P: +44 2036527453
M: +44 7946414440
douglas@lomondyachts.com
www.lomondyachts.com

Blush



Additional Specifications For Blush:

LOA:	148' 6" (45.26m)	Delivery/Model	2007
Hull Material:	Stainless Steel	Year:	
Tonnage:		Year Built:	2007
Flag:	Jamaica	Builder:	PERINI NAVI
Location:	Monaco, France	Type:	Cruising Sailboat
Price:	€12,495,000 EUR	Engines:	Single, Caterpillar,
		Staterooms:	5
		Classifications:	
		MCA:	ISM:

Generated On 9/10/2022 7:31 PM by Douglas McFarlane

Lomond Yachts
Admiralty Way
Teddington
Richmond-Upon-Thames England
TW11 0NL United Kingdom

Douglas McFarlane
P: +44 2036527453
M: +44 7946414440
douglas@lomondyachts.com
www.lomondyachts.com

Blush



CONSTRUCTION

Steel hull with aluminium superstructure and teak decks.

MAIN CHARACTERISTICS

Built by: Perini Navi

Year: 2007

Length: 45.26m (148ft 6in)

Beam: 9.40m (30ft 10in)

Draft: 4.14m (13ft)

Classification: ABS IYB (Jamaican) LYC

Flag: Jamaica (commercial)

Hull colour: Red

Gross tonnage: 315

Net tonnage: 94 t

Displacement: 362 t

Designer: Perini Navi

Naval Architect: Ron Holland Design

Interior Designer: Perini Navi

Speed: 11/14 knots (approx)

Range: 4000 nm at 11 knots (including generator)

Fuel capacity: 31,300 Litres (8,269 US Gallons)

Water capacity: 8,200 Litres (2,166 US Gallons)

Black water capacity: 1,600 Litres (423 US Gallons)

Grey water capacity: 1,600 Litres (423 US Gallons)

Fuel consumption: 80 l/h (21.13 US gallons) including generator at 11 knots

MACHINERY

Engines: 1 Caterpillar 1100 HP

Engine model: C32

Engine hours: 5766 hrs (September 2022)

Zero hour rebuild in 2016 and 6.000 hours CAT recommended service in 2022.

Fuel: Diesel

Propulsion: Prop Shaft

Gearboxes: Hundested A/S, CPG 50, 4-11:1

Steering: Marsili hydraulic, double piston, rudder torque 3000 kgm

One sea water-lubricated Hundested A/S, "Sandvik SAF 2205" duplex stainless steel propeller shaft, with NI-AL bronze controllable pitch propeller

Generators: Two Caterpillar 3054 DIT, one Caterpillar 3054 DINA

NOTE: Generators exhaust system consists of an AquaLift muffler with efficient sound reducing qualities and a gas/water separator which allows further washing of gasses and noise reduction.

Generator hours September 2022:

Gen1 13598 hrs- Gen2 13555 hrs - Gen3 5692 hrs

Electricity: 380V/50 Hz three-phase with neutral for machinery power

24V/50 Hz transformers for lighting circuits

220V/50 Hz single-phase for lighting and low power machinery 24V cc for emergency lighting, signalling and R/T stations circuits, electronic instruments, and alarms

Generated On 9/10/2022 7:31 PM by Douglas McFarlane

Lomond Yachts

Admiralty Way

Teddington

Richmond-Upon-Thames England

TW11 0NL United Kingdom

Douglas McFarlane

P: +44 2036527453

M: +44 7946414440

douglas@lomondyachts.com

www.lomondyachts.com

Blush



Shore power: One ASEA, 60 KW shore power frequency converter with seamless transfer and smart box located in an accessible position in the aftship.

Batteries: One gel 24V main engine starting battery bank (new 2021)

One service battery bank in engine room (new 2022)

Two gel 24V generator starting battery banks (new 2021)

One gel 12V emergency generator starting battery (new 2021)

GMDSS radio bank and emergency bank in fly bridge void. Both lead acid (new 2022)

Air Conditioning: The system is composed of terminal area units (fan-coils) and two external air make up units

Other Machinery

Two Idromar MC55 watermakers with 50 micron MC3 sand filters

Alfa Laval fuel purifier 900lph

Racor triple fuel filters 2040 180 x 2 GPH; fuel transfer pump is fitted with an inline fuel flow meter on the output

Fuel purifier

Fuel manual transfer pump

Lubricating oil tank with a filter on the lube oil delivery;

NOTE: In the engine room there are quick disconnects provided for separate dirty oil discharge lines and clean oil filling lines on port and stbd between main engine and generator.

Two rotary air compressors with compressed air reservoir

Active carbon filters, silver ion sterilizer (forward bilge area)

Hamman system (forward bilge area), bilge water treatment system

Sludge discharge pump oil transfer pump

Refrigerated garbage locker in forepeak

Emergency generator with day tank and emergency panel

Two 200l boilers with UV sterilizer for fresh water (forward bilge)

Propeller: one sea waterlubricated Hundested A/S, "Sandvik SAF2205" duplex stainless steel propeller shaft, with NIAL bronze controllable pitch propeller approx.diameter 1500mm

NOTE: The centerboard system is controlled from the starboard external sail system control panel. The system is activated by a hydraulic piston connected to the hull structure with a spherical joint; the pin for the disconnection of the piston from the hull is dismantled inside the yacht through hatches executed on the centerboard trunk side.

Earth fault indicator on the main switchboard.

An automatic 24V CC submersible pump is installed in lowest part of each bilge compartment.

The fire fighting pump is plumbed to the bilge manifold in order to operate as a bilge pump in case of emergencies.

A bilge oily water separator is installed in the engine room. The bilge separator is "IMO type II" approved.

Hot and cold water distribution is by two 380V AC electric pumps, one backup to the other and connected to an electronic type autoclave.

Hot water is produced by two stainless steel electric boilers.

Generated On 9/10/2022 7:31 PM by Douglas McFarlane

Lomond Yachts
Admiralty Way
Teddington
Richmond-Upon-Thames England
TW11 0NL United Kingdom

Douglas McFarlane
P: +44 2036527453
M: +44 7946414440
douglas@lomondyachts.com
www.lomondyachts.com

Blush



ACCOMMODATION

Very flexible accommodation for up to 12 guests in a 4 or 5 cabin configuration. (with a total of 13 beds)

4 cabins can become 5 cabins by converting the master suite, which can be divided with the use of a mahogany wall panel. When a 5th cabin is created it shares an ensuite with the twin cabin located immediately forward of the master suite on the port side. The master has a king-size bed and the 5th cabin has a double bed when in place.

The twin cabin immediately forward of the master can be converted into a double and also has two Pullmans berths.

The remaining two guests cabins forward are:

A VIP cabin with a queen-size bed and sofa at the port side forward and a convertible twin cabin (can become a double) also with a Pullman berth.

GALLEY & LAUNDRY EQUIPMENT

Main Galley

One Miele H 399 B convection oven
Granite countertop and splash board
One ISE 77 macerator
One Angelpro grill top
One Miele G 7856 stainless steel dishwasher
One Hoshizaki IM-25 water cooled ice maker
One stainless steel range with variable speed hood
One Angelpro four electric and two induction plate cooktop
One Miele microwave oven
One Angelpro electric steamer/convection oven
One custom built in, six doors three drawer refrigerator/freezer
One reverse osmosis fresh water purifier - (drinking water)

Crew Mess

One Insinkerator trash compactor
One Miele small commercial refrigerator

Salon Interior Bar

Marble counter top
One Miele small commercial refrigerator
One standard stainless sink
One reverse osmosis fresh water purifier - (drinking water)

Aft Cockpit Exterior Bar

Marble counter top
One Miele small commercial refrigerator (located in port side corner bar)
One Hoshizaki ice maker (located in port side corner bar)
One Insinkerator instant hot tap

Lazarette

Two Liebherr 60L freezer
One Liebherr 60L refrigerator
One Liebherr hundred and twenty bottle wine fridge
One Samsung fifty bottle wine fridge

Laundry

Two Miele WS5446 MC23 steel washing machines
Two Miele T5206 steel dryers
One ironing board
Standard stainless steel sink with cover in corian

Generated On 9/10/2022 7:31 PM by Douglas McFarlane

Lomond Yachts
Admiralty Way
Teddington
Richmond-Upon-Thames England
TW11 0NL United Kingdom

Douglas McFarlane
P: +44 2036527453
M: +44 7946414440
douglas@lomondyachts.com
www.lomondyachts.com

Blush



COMMUNICATION EQUIPMENT

Sailor 900 Vsat (2018) (data & phone)
Three cellular gsm/gprs interface (voice, fax, data)
Eight portable VHF ICOM radios
One Furuno 8800DSC VHF transceiver unit with display and integrated DSC keyboard
Two Icom portable GMDSS VHF's
One Furuno Felcom 15 system Satcom
One Furuno NX700 Navtex receiver
One McMurdo E3 EPIRB, 406 Mhz
Two S4 McMurdo radar transponders SART 9 Ghz
One Panasonic KXTDA 100 telephone system w/ maximum of 18 intercommunicating sockets
Interphone communication system with two control units with volume controls in the wheelhouse and main deck.
One Sailor 6004 AIS
Immarsat - C Sailor pre-wired telephone and Fleet broadband

NAVIGATION EQUIPMENT

Two Sailor 6004 GPS
One electronic compass
One C. Plath Navipilot V/GM autopilot
One Gyrocompass with analogue repeaters
One C. Plath Navigat MK1 gyrocompass
One Gyrocompass remote control
Four Furuno MU 190 LCD flat screen color monitors
One Hatteland 19" flat screen monitor
One Hatteland PC for charting purposes
One Furuno ARP-11 autoplotter
One Furuno ETR 6/10 depth sensor
Two Furuno GPS GP 90 with antennas
One Furuno twins scope sonar
One AGF 1500 UPS
B&G Hercules 2000 series - six control units & eight displays
Two Furuno navnet BBs
Two Furuno FAR-2117 radars interfaced with Gyrocompass and AIS
One Radar Integrator board
One Video matrix (to distribute images in two rooms)
One Furuno Max Sea Professional charting software
One C. Plath Jupiter magnetic compass

ENTERTAINMENT EQUIPMENT

All TV's except captain have Direct TV Latin America and SKY TV European receivers Apple TV and PLEX Movie players
One naval Nargentus Terrestrial TV and FM/AM radio antenna
One Seatel 4004 satellite dome
Ipad controls throughou for AV system

Main Salon

One Samsung 55" plasma TV monitor
One Samsung SW5000 multistandard VTR and worldwide TV tuner
One Rotel DVD1060 multizone DVD player
One Rotel RSX1056 Dolby Digital Surround 5X75 watt amplifier
Three B&W VM1 speakers
One B&W AS subwoofer

Generated On 9/10/2022 7:31 PM by Douglas McFarlane

Lomond Yachts
Admiralty Way
Teddington
Richmond-Upon-Thames England
TW11 0NL United Kingdom

Douglas McFarlane
P: +44 2036527453
M: +44 7946414440
douglas@lomondyachts.com
www.lomondyachts.com

Blush



Two B&W CWM800 inwall/inceiling speakers
One AMX N14000 control unit with Ethernet port
One AMX AXD - IRSM with infrared receiver
One Philips RU980 intelligent remote control with color touch screen display
One AMX AXD - MSP8 software eight buttons keypad
One Xantech 480-80B Ir receiver
One Xantech 789-44 connecting block with power supply
One Extron MTP R AV audio/video rx from CAT 5
One Imerge M2004160, four zone multiroom hard disk audio server

Aft Cockpit

One NEC P350X Digital Projector with removable Shine Through 64" movie screen
One Teac CRH220 sintoamplifier
One Apart SBR160 audio amplifier
Six Boston Dsi460 two way /speaker

Owner's Stateroom

One LG 60" plasma TV monitor
One Samsung SW5000 multistandard VTR and worldwide TV tuner
One AMX AXD - IRSM with infrared receiver
One Extron MTP R AV audio/video rx from CAT 5
One Sintoamplifier AV with multizone DVD player
Two B&W CWM800 inwall/inceiling speakers
One Xantech 480-80B Ir receiver
One Xantech 789-44 connecting block with power supply
One Philips RU980 intelligent remote control with color touch screen display
Two Bose 131 inwall/inceiling marine speakers (bathroom)
One Raymar CPA50 amplifier (40 watt) (bathroom)
One AMX AXD-MSP8 softwire eight buttons keypad

Guest Staterooms

One Samsung 26" LCD TV
Two Samsung 40" LCD TVs
One Samsung SW5000 multistandard VTR and worldwide TV tuner
One AMX AXD-IRSM with infrared receiver
One Extron MTP R AV audio/video rx from CAT 5
One Bose Car Stereo DVD Multizone Player
Two B&W CWM800 inwall/inceiling speakers
One Xantech 480-80B Ir receiver
One Xantech 789-44 connecting block with power supply
One Philips RU980 intelligent remote control with color touch screen display

Lazarette

One Sony CDXF7500 car stereo with CD player, CDR/ RW/MP3 reader, RDS digital tuner, AUX input
Two JBL GTO 526 speakers

Wheelhouse

One Sony CDX-F7500 car stereo with CD player, CDR/ RW/MP3 reader, RDS digital tuner, AUX input
Two B&W CCM50 speakers

Generated On 9/10/2022 7:31 PM by Douglas McFarlane

Lomond Yachts
Admiralty Way
Teddington
Richmond-Upon-Thames England
TW11 0NL United Kingdom

Douglas McFarlane
P: +44 2036527453
M: +44 7946414440
douglas@lomondyachts.com
www.lomondyachts.com

Blush



Crew Mess

One Samsung 26" LD4200 LCD TV
One Samsung SW5000 multistandard VTR and worldwide TV tuner
One AMX AXD-IRSM with infrared receiver
One Extron MTP R AV audio/video rx from CAT 5
One Sintoamplifier AV with multizone DVD player
Two B&W CWM800 inwall/inceiling speakers
One Xantech 480-80B Ir receiver
One Xantech 789-44 connecting block with power supply
One Philips RU980 intelligent remote control with color touch screen display

Captain's Cabin

One Samsung 26" LD4200 LCD TV
One Samsung SW5000 multistandard VTR and worldwide TV tuner
One AMX AXDIRSM with infrared receiver
One Extron MTP R AV audio/video rx from CAT 5
One Sintoamplifier AV with multizone DVD player
Two B&W CWM800 inwall/inceiling speakers
One Xantech 48080B Ir receiver
One Xantech 789-44 connecting block with power supply
One Philips RU980 intelligent remote control wit color touch screen display

Crew Cabins and Laundry

One Sony CDX-F7500 car stereo with CD Player, CDR/RW/MP3 reader, RDS digital tuner, AUX input
Two JBL GTO 526 speakers

TENDER & TOYS

One Williams diesel Jet 565 - 190hp Yanmar in board (new in April 2019)
One 2.5 inflatable soft bottom tender - 20hp Yamaha outboard
Four inflatable SUPs
One inflatable (two person) kayak
Assortment of towable toys
Two sets of adult water skis
One set of child water skis
Dive gear: six bottles, six regulators, two BCD's
One Capitano C3 E Diving compressor is installed in the aft peak with an intake in the swimming platform area. Dive lockers have built in tank racks with compressed air point available adjacent
Twelve sets of snorkel gear
Various wet suits
Two F5S and two F5 seabobs (new in 2017)
NOTE: The tender filling station in the lazarette has a separate electric pump, with hose and gun. This pump will also fill the emergency generator tank.

Generated On 9/10/2022 7:31 PM by Douglas McFarlane

Lomond Yachts
Admiralty Way
Teddington
Richmond-Upon-Thames England
TW11 0NL United Kingdom

Douglas McFarlane
P: +44 2036527453
M: +44 7946414440
douglas@lomondyachts.com
www.lomondyachts.com

Blush



Deck Equipment

One Motomar hydraulic passarelle
One Kahlenberg T1 airhorn
Four underwater lights
Two Nanni windlass anchors
Two Nanni aft mooring capstans
One Fortress with 10 meter chain rode anchor
Two sets of mooring whips bases
Two sets of mooring whips
One shell door located port side, operated by electro-hydraulic system, teak covered with two retractable cleats, one handrail and a swimming ladder, two recessed lights
Swimming platform built into the transom with stairs to access the platform. The platform has teak deck planking, removable side handrails
One 30m shore power and telephone cable
One battery operated loud hailer
One Motomar hydraulic boarding ladder (built in and recessed in hull)
One set of mooring whips

RIGS & SAILS

Doyle Genoa sail (2016) Doyle Stay sail (2016) North Main sail (2018) North asymmetric spinnaker (2007) - little used
Sail material is Carbon Spectra
Standing rigging. 5 years rigging overhaul (RSB Palma 2020)
Mast height is approx. 52.4m/171'9"
Aluminum mast with five sets of spreaders and a carbon fiber stoway boom by Perini Navi,
Three Perini Navi electric captive winches for tender davit, genoa, main sail and blade
Lights on the rig shine up and down and a one directional light is controlled from the flybridge
Seven Perini Navi electric captive winches
Two Antal W66 manual winches
NOTE: Perini Navi sails are trimmed by capture drums in deck compartments and halyards raised by the same winches below decks in machinery spaces. These winches work on electrical power.
NOTE: The furlers for the headsails are also by Perini Navi and electric for both the genoa and the blade. Controls for the sails are from the flybridge station and all done by finger touch controls.
Two Harken #1120 three speed conventional winches on foredeck



SAFETY & SECURITY

The engine room is equipped with a CO2 fire fighting system
The engine room and galley have heat detectors installed
Carbon Monoxide sensors in all cabins crossed by the exhaust line
TVCC system (located on port and starboard spreader, engine room)
Two fire fighting suits
Two inflatable twenty person life rafts, type A
Six man life rafts on flybridge
Eighteen adult life jackets
Five child life jackets
Two breathing apparatus with four spare bottles
Five CO2 fire extinguishers
Fifteen 6 kg Dry Powder fire extinguishers
Nine 2 kg Dry Powder fire extinguishers
Five fire extinguishers in accommodation
One MCA approved medical kit
One set of diurnal signals
Two life buoys fitted with self-igniting light and smoke signal
Two life buoys fitted with a 30m buoyant lifelines
Eighteen lightweight thermal suits (Solas approved)
Vessel is equipped with an intrusion alarm that monitors all hatches and entrance ways
Four Rocket line throwers
Eighteen immersion suits (Solas)

REFIT HISTORY

Refit work 2018

Interior refit
New Carpet in the saloon
New vinyl applied in cockpit and guest areas
New furniture including tables, sofas, and chairs in guest areas
Guest accommodation lighting system changed to LED, new rope lighting in the ceiling also changed

Refit work 2019/2020

RSB rig refit 2020 required every 5 years – Rig removal, the testing and replacement of the required shrouds, and fittings. The service and overhaul of the Staysail and genoa furling motors. The service and overhaul of all hardware related to the sailing system. Service, cleaning and repair to the staysail, main sail, and genoa.
Saloon lighting system changed to LED, new rope lighting in the ceiling also changed
Celling panels in the saloon were repainted
All deck caulking was removed on all decks. Caulking lines were routed to a further depth and re-caulked and sanded flush.
Deck fittings were removed at this time and refitted flush after sanding of the deck area.
Various engineering maintenance jobs were completed.
New tender - Williams DJ 565 - 5.7 meters, 8 guests, 190hp Yanmar inboard. Runs on diesel refilled using the fuel pump in the lazarette.

Refit work 2021/2022 – Total approximate cost 1.8 million EUR

ABS Class 15-year special survey

Air Conditioning system overhaul
Oily water separator – Serviced and recertified. Valid until Jan-2027
Black & Greywater system overhaul
Cathodic anti corrosion protection – Replaced the Cathodic anodes
Compressor system overhaul

Generated On 9/10/2022 7:31 PM by Douglas McFarlane

Lomond Yachts
Admiralty Way
Teddington
Richmond-Upon-Thames England
TW11 0NL United Kingdom

Douglas McFarlane
P: +44 2036527453
M: +44 7946414440
douglas@lomondyachts.com
www.lomondyachts.com

Blush



Two new ABS approved anchor swivels
Two new ABS approved anchor chain 120m each
Stainless steel anchor hull plates and anchors were professionally polished
Anchor windlass & Capstan were professionally serviced
All deck hatches and their mechanical system overhauled
Shell door - Seal replaced
Shell door hydraulic hoses replaced
Port & starboard throttle and thruster watertight boxes were rebuilt and painted. Breakers, switches, and relays were replaced and serviced within the helm station controls.
Transom hydraulic rams overhauled
Transom Hydraulic hoses replaced
Transom electrical boxes cables replaced
Fire & bilge pump overhaul
Fresh water pump overhaul
Galley Ice maker replaced
Water makers overhaul
Induction stove top service
Drop down keel – Ram was removed and overhauled, all hoses and associated fittings were replaced
Bow and stern thrusters were completely overhauled by hundested in 2019, in 2022 seals and hydraulic hoses were changed.
LSA and FF equipment up to date and certified. Apr-2022
Main engine – 6000 hr service as recommended by Caterpillar. (5300 hrs since rebuild in 2016)
Gyro service
Batteries – Service batteries; GMDSS batteries; and emergency batteries were all replaced
Generator 1&2 – 12000 hr service as recommended by Caterpillar.
Generator 3 – 4000 hr service as recommended by Caterpillar.
ASEA shore power box – professionally cleaned
Galley fridge/freezer refrigeration system overhaul
Aft deck mooring winches – Rebuilt winch mechanisms, gearboxes, and serviced motors
Port & starboard Harken 1120 deck winches – Service winch mechanisms, gearboxes, and motors
Steel work carried out on the deck and hull with supervision from ABS to fix all the corrosion issues: forepeak; cockpit; winch room. All other bilge and deck spaces were treated and repainted to prevent corrosion
Fresh water tanks were treated, primed & top coated with certified paint
All fuel sludge and oil tanks were professionally cleaned, and pressure tested
Propeller shaft - shaft was sent to Denmark to fill cavities and re-machine all approved by ABS. Before reinserting the shaft, all shaft bearings and seals were replaced. Propeller was also checked and tested, and rebalance at this time
Rudder - top rudder bearing replaced in 2019, the rudder was removed again in 2022 to check all tolerances as requested by ABS.
Vinyl repair – Cockpit and guest areas were redone in vinyl
Hull paint – completely repainted in 2018 in 2022 the whole hull was coated with a ceramic coating
Hull antifouling – Heavy preparation on the hull, keel and thruster voids. Areas coated with 2-4 coats of epoxy primer and up to 3 coats of Jotun antifouling
Hull anodes were replaced
Overboard valves – All overboard valves were removed, pressure tested and either reconditioned or replaced as required by ABS
New carpet in Master cabin
Ventilation and extraction system was professionally cleaned and sterilised.

Generated On 9/10/2022 7:31 PM by Douglas McFarlane

Lomond Yachts
Admiralty Way
Teddington
Richmond-Upon-Thames England
TW11 0NL United Kingdom

Douglas McFarlane
P: +44 2036527453
M: +44 7946414440
douglas@lomondyachts.com
www.lomondyachts.com

Blush



COMMENTS

Under current ownership since 2018, “Blush” has benefitted from the care and attention of a passionate and highly experienced owner, professional captain and crew .

She is in very good condition throughout and has become an extremely popular and successful charter yacht operating on both sides of the Atlantic, with revenue covering a large proportion of her running costs .

“Blush” is in turn key condition ready for her next owner to step aboard and enjoy with no major works on the horizon having just completed her fifteen year survey (and much more over the last four to five years as listed above) .

Generated On 9/10/2022 7:31 PM by Douglas McFarlane

Lomond Yachts
Admiralty Way
Teddington
Richmond-Upon-Thames England
TW11 0NL United Kingdom

Douglas McFarlane
P: +44 2036527453
M: +44 7946414440
douglas@lomondyachts.com
www.lomondyachts.com

Blush



Blush-5669-036-running



120318BTIS-8815



Generated On 9/10/2022 7:31 PM by Douglas McFarlane

Lomond Yachts
Admiralty Way
Teddington
Richmond-Upon-Thames England
TW11 0NL United Kingdom

Douglas McFarlane
P: +44 2036527453
M: +44 7946414440
douglas@lomondyachts.com
www.lomondyachts.com

Blush



120318BTDS-7279



120318BTDS-7291



Generated On 9/10/2022 7:31 PM by Douglas McFarlane

Lomond Yachts
Admiralty Way
Teddington
Richmond-Upon-Thames England
TW11 0NL United Kingdom

Douglas McFarlane
P: +44 2036527453
M: +44 7946414440
douglas@lomondyachts.com
www.lomondyachts.com

Blush



120318BTIS-8836



120318BTIS-8833



Generated On 9/10/2022 7:31 PM by Douglas McFarlane

Lomond Yachts
Admiralty Way
Teddington
Richmond-Upon-Thames England
TW11 0NL United Kingdom

Douglas McFarlane
P: +44 2036527453
M: +44 7946414440
douglas@lomondyachts.com
www.lomondyachts.com

Blush



120918BTIS-0323



120318BTIS-8884



Generated On 9/10/2022 7:31 PM by Douglas McFarlane

Lomond Yachts
Admiralty Way
Teddington
Richmond-Upon-Thames England
TW11 0NL United Kingdom

Douglas McFarlane
P: +44 2036527453
M: +44 7946414440
douglas@lomondyachts.com
www.lomondyachts.com

Blush



120318BTIS-8885



120318BTIS-8880



Generated On 9/10/2022 7:31 PM by Douglas McFarlane

Lomond Yachts
Admiralty Way
Teddington
Richmond-Upon-Thames England
TW11 0NL United Kingdom

Douglas McFarlane
P: +44 2036527453
M: +44 7946414440
douglas@lomondyachts.com
www.lomondyachts.com

Blush



120318BTIS-7364



120318BTIS-7333-2



Generated On 9/10/2022 7:31 PM by Douglas McFarlane

Lomond Yachts
Admiralty Way
Teddington
Richmond-Upon-Thames England
TW11 0NL United Kingdom

Douglas McFarlane
P: +44 2036527453
M: +44 7946414440
douglas@lomondyachts.com
www.lomondyachts.com

Blush



120318BTIS-7300



120318BTIS-8872



Generated On 9/10/2022 7:31 PM by Douglas McFarlane

Lomond Yachts
Admiralty Way
Teddington
Richmond-Upon-Thames England
TW11 0NL United Kingdom

Douglas McFarlane
P: +44 2036527453
M: +44 7946414440
douglas@lomondyachts.com
www.lomondyachts.com

Blush



120318BTIS-8866



120318BTIS-8676



Generated On 9/10/2022 7:31 PM by Douglas McFarlane

Lomond Yachts
Admiralty Way
Teddington
Richmond-Upon-Thames England
TW11 0NL United Kingdom

Douglas McFarlane
P: +44 2036527453
M: +44 7946414440
douglas@lomondyachts.com
www.lomondyachts.com

Blush



120318BTIS-7318



120318BTIS-8857



Generated On 9/10/2022 7:31 PM by Douglas McFarlane

Lomond Yachts
Admiralty Way
Teddington
Richmond-Upon-Thames England
TW11 0NL United Kingdom

Douglas McFarlane
P: +44 2036527453
M: +44 7946414440
douglas@lomondyachts.com
www.lomondyachts.com

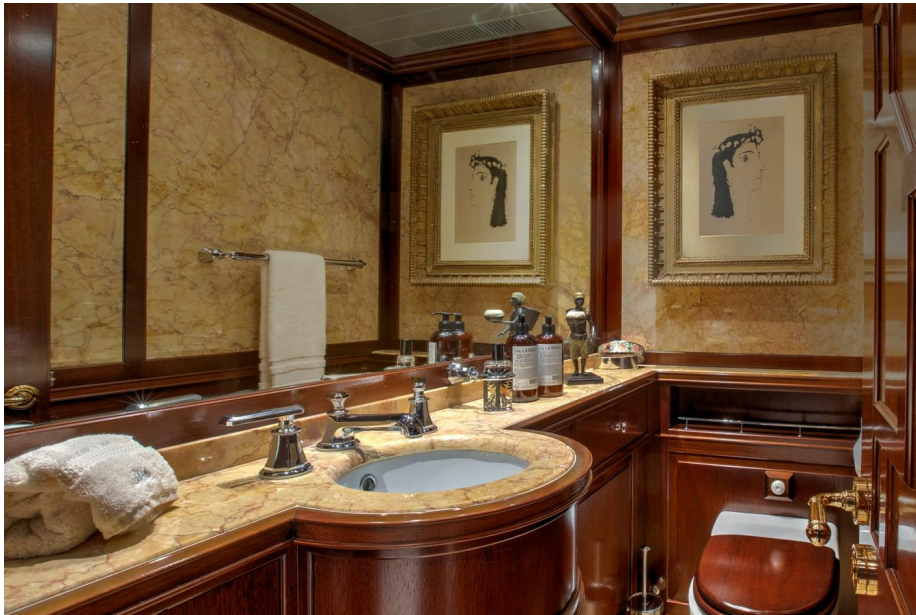
Blush



120318BTIS-8686



120318BTIS-8695



Generated On 9/10/2022 7:31 PM by Douglas McFarlane

Lomond Yachts
Admiralty Way
Teddington
Richmond-Upon-Thames England
TW11 0NL United Kingdom

Douglas McFarlane
P: +44 2036527453
M: +44 7946414440
douglas@lomondyachts.com
www.lomondyachts.com

Blush



120318BTIS-8702



120918BTSC-0293



Generated On 9/10/2022 7:31 PM by Douglas McFarlane

Lomond Yachts
Admiralty Way
Teddington
Richmond-Upon-Thames England
TW11 0NL United Kingdom

Douglas McFarlane
P: +44 2036527453
M: +44 7946414440
douglas@lomondyachts.com
www.lomondyachts.com

Blush



Blush-GA



Generated On 9/10/2022 7:31 PM by Douglas McFarlane

Lomond Yachts
Admiralty Way
Teddington
Richmond-Upon-Thames England
TW11 0NL United Kingdom

Douglas McFarlane
P: +44 2036527453
M: +44 7946414440
douglas@lomondyachts.com
www.lomondyachts.com

Blush