



**D Y N A M I Q**

GRAN TURISMO TRANSATLANTIC SERIES

***GTT 135***

***GTT 135***

**THE NO-COMPROMISE ALL-ROUNDER.  
EXCELLENT SEAKEEPING.  
EXTENDED RANGE.**

The GTT 135 is the perfect, all-aluminum, fast cruiser. Built on a 41 m (135') platform with a comfortable round bilge hull and a shallow draught of just 1.8 m (5' 11"), she is the ideal family superyacht for cruising the Mediterranean, Caribbean or Asian Pacific. Her transatlantic range of 3,000 nautical miles means the yacht can voyage between the Caribbean and the Med directly, making the most out of the two cruising seasons.

With the largest sundeck in her class (120 m<sup>2</sup> / 1,291 sq/ft) and five very spacious staterooms, she is the epitome of versatile luxury in a user-friendly and relatively compact package.





*GTT 135*





*GTT 135*





*GTT 135*





# KEY FEATURES

**GTT 135**



## Full aluminium round bilge fast displacement hull

Drawn by the famous Dutch naval architects Van Oossanen, the GTT 135 unique hull features a round-bilge shape for remarkably low resistance and low fuel consumption, while still being capable of high speeds. The design decreases vertical accelerations in the hull, which translates into a far more comfortable motion when sailing. The avant-garde bow shape with a vertical stem maximises the waterline length, enhancing performance even more. To keep spray levels low, an integrated spray rail deflects water hitting the bow area. Built entirely from marine grade aluminium, the GTT 135 hull guarantees unparalleled comfort and safe operation for more than 25 years.



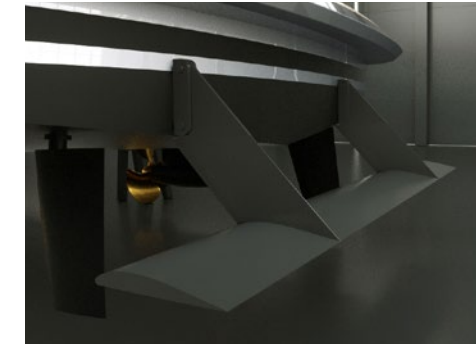
## Robust full aluminium construction

Certified marine-grade 5083 aluminium and stronger 5383 Sealium, a lightweight alloy that weighs three times less than steel, is used for Dynamiq GTT 135 hull and superstructure. A lighter hull provides a better performance, shallower draft, lower fuel consumption. Another benefit is that aluminium guarantees a stiff, robust and vibration-free vessel that is very comfortable and behaves well in a heavy swell or choppy seas. The strength-to-weight ratio of aluminium is equivalent to that of steel and there is much less risk of serious damage in case of a collision than with a fibreglass hull. Unlike composite materials, aluminium is fully recyclable, odourless, does not rust or creak at sea and does not burn in the atmosphere.



## Curved fin stabilizers by Side Power

Vector Fins stabilisers dramatically reduce roll as well as undesired yaw and sway motions caused by active fins. Their vertical concave shape creates a net force direction, both in cruising and at-anchor modes, so the work is more up-down instead of side-to-side. By changing the net force angle, this also increases the leverage arm around the boat's rolling point, further increasing the physical forces that work on the boat to reduce roll. This provides more efficient stabilisation per fin size, which means that drag and power consumption are a lot less than with other fins offering comparable roll reduction.



## Hull Vane®

The Hull Vane® is a patented fixed foil located below the stern of a ship. Developed by renowned Dutch naval architects Van Oossanen it influences the stern wave pattern and creates hydrodynamic lift, which is partially oriented forward. This innovation leads to significant reduction of the hull's resistance, which in turn enables the installation of much smaller engines, fuel savings and longer range. The Hull Vane® also improves stability under way and at anchor, while reducing both pitching and yawing motions.



## XIR glass

The GTT 135 features next-generation laminated XIR glass that allows maximum light transmission, while keeping solar heat gain at bay. Harmful UV rays are almost completely blocked, and heat transmission reduced by 60%. The result is an interior that offers the wide panoramas of large windows without the penalty of heat build-up. This means significantly reduced air-conditioning loads and therefore lower running costs. The glass manufacturer is Isoclima, an Italian high-tech company that also supplies glass for luxury automobiles such as Bentley, McLaren, Mercedes and BMW.





# KEY FEATURES

***GTT 135***



**Transatlantic range of 3000 nm @ 10 knots**



**Fun Air inflatable pool, 5 x 6 meters  
(16' 5" x 19' 8")**



**Interior volume of 299 gross tons**



**High-end audio by Bowers & Wilkins**



**Japanese Teppanyaki on sundeck**



**Main saloon fireplace**





*GTT 135*





*GTT 135*





# MAIN SPEC

**GTT 135**



Length overall: 41 m / 135'  
 Beam: 8.2 m / 26' 11"  
 Draft: 1.8 m / 5' 11"  
 Material: Full aluminium, 5083 / 5383  
 Hull type: Round bilge, fast displacement  
 Tonnage: 299 GT

Main engines: 2x MAN V12-1650, 1,213 kW  
 Generators: 2x 70 kW, Kohler  
 Stabilisers: 2x Side Power fins VFS 1950, zero-speed fuction  
 Max speed: 21 knots  
 Range: 3,000 nm @ 12 knots

Fuel: 29,600 l / 7,820 US gallons  
 Fresh Water: 9,500 l / 2,245 US gallons  
 Grey and Black: 6,800 l / 1,797 US gallons

Guests: 11 in 5 cabins  
 Crew: 6 in 3 cabins

Class: RINA commercial, LY4 compliant  
 Notations: RINA Comfort Class, RINA Green Star

Naval architecture: Van Oossanen  
 Exterior design: Dobroserdov Design  
 Interior design: Giuseppina Arena / Dynamiq





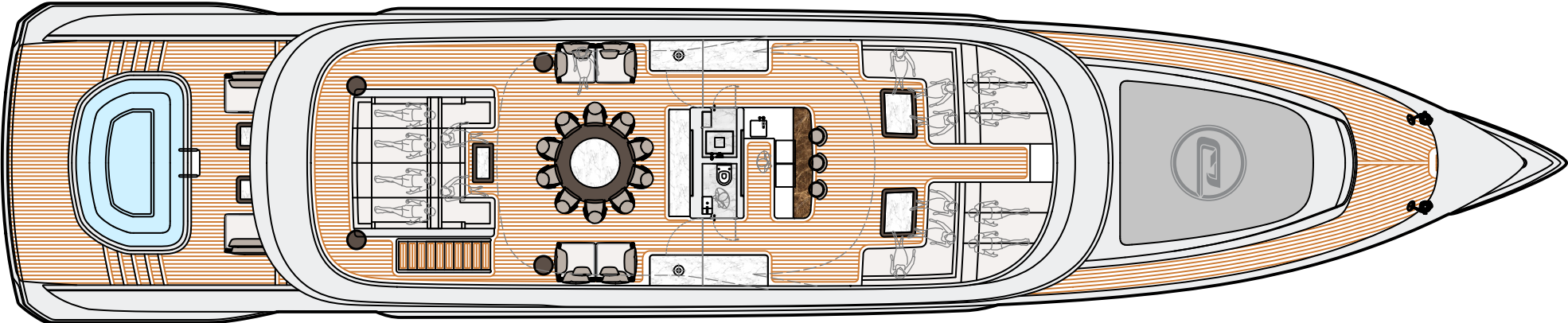
*GTT 135*



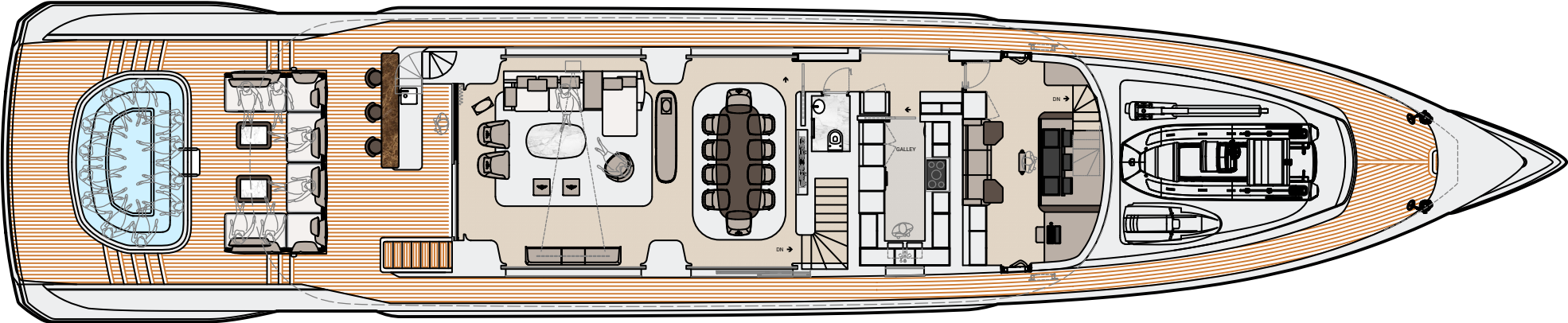


# DECK PLANS

*GTT 135*



Sun deck



Main deck (Layout A)

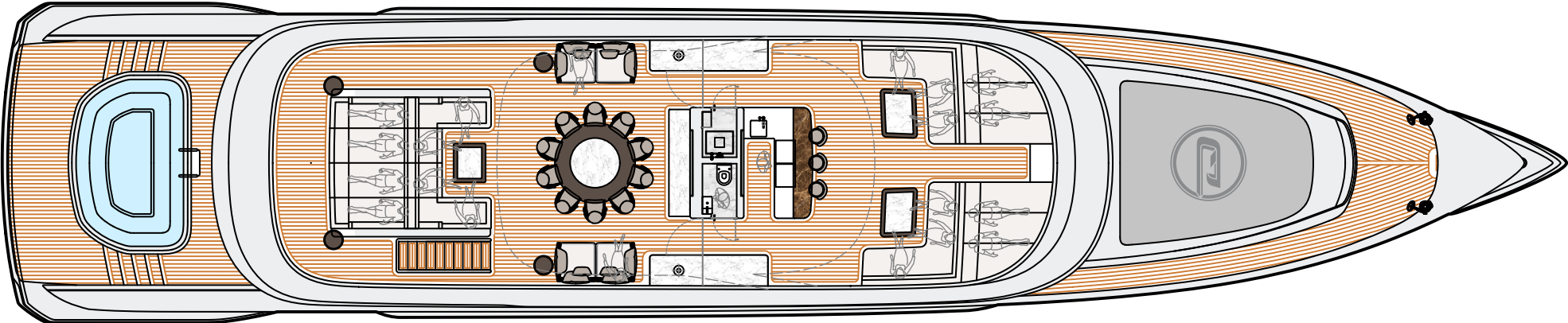
This drawing is the property of Dynamiq Yachts SARL and is not to be modified, used or reproduced in whole or part without written permission.



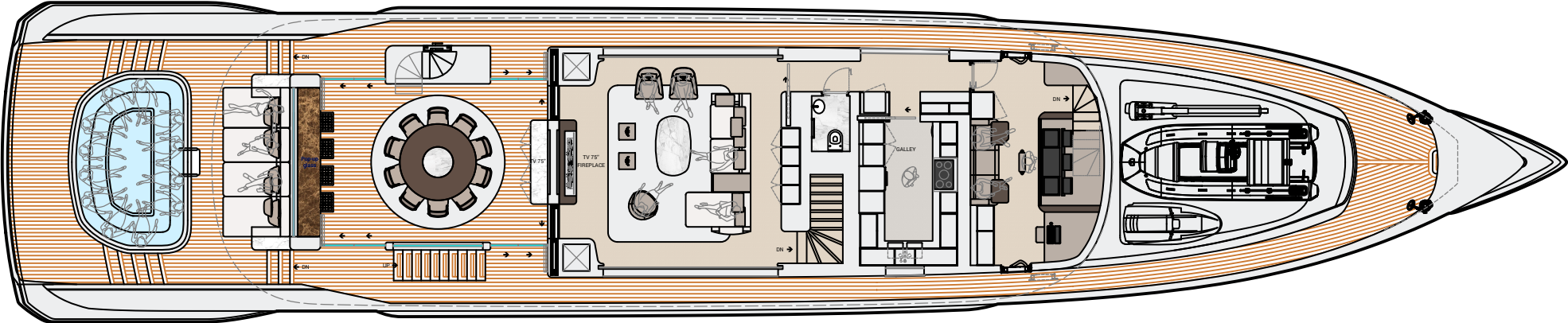


# DECK PLANS

*GTT 135*



Sun deck



Main deck (Layout B)

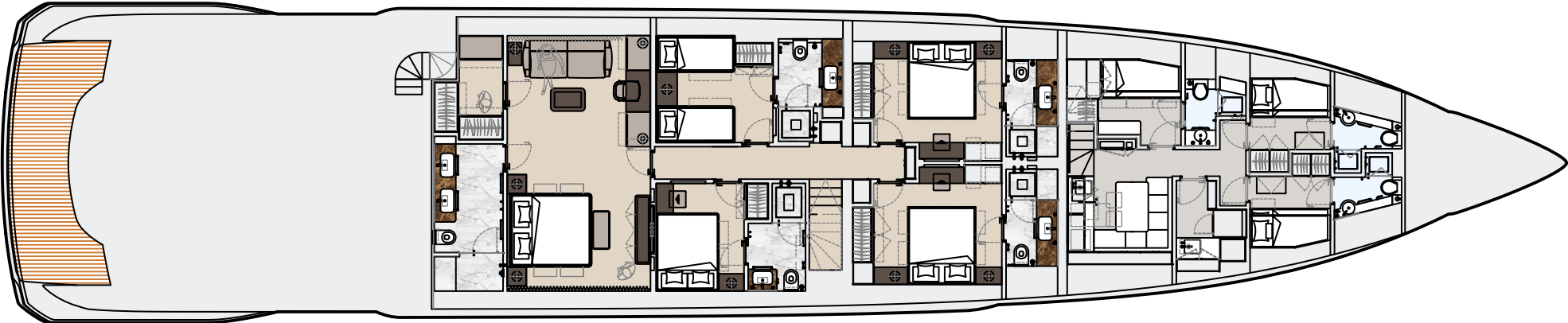
This drawing is the property of Dynamiq Yachts SARL and is not to be modified, used or reproduced in whole or part without written permission.



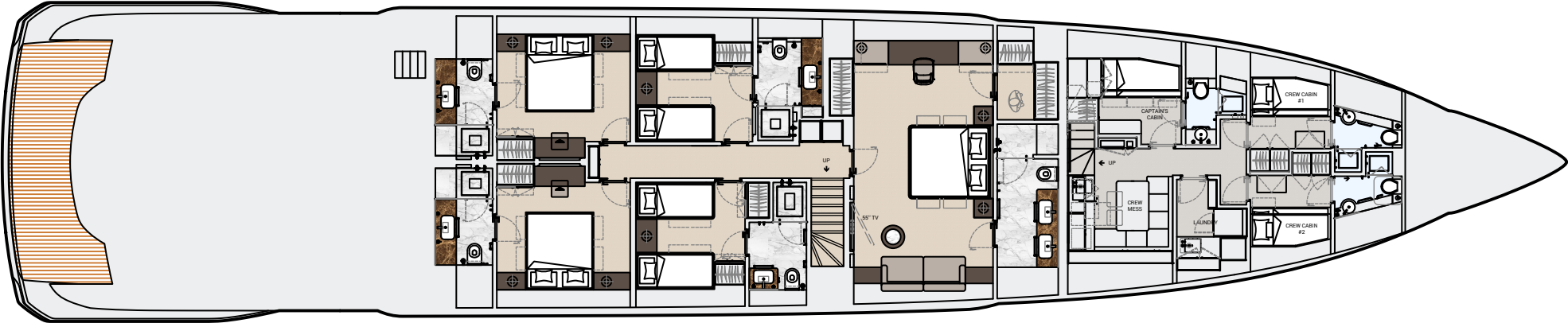


# DECK PLANS

*GTT 135*



Lower deck (layout A)



Lower deck (Layout B)

This drawing is the property of Dynamiq Yachts SARL and is not to be modified, used or reproduced in whole or part without written permission.





*GTT 135*





GTT 135





*GTT 135*





*GTT 135*





GTT 135





*GTT 135*





GTT 135





GTT 135





GTT 135





*GTT 135*





# PRICE, OPTIONS & PAYMENT TERMS

**GTT 135**

## BASE PRICE:

€ 16,500,000

## OPTIONS\*:

<input type="checkbox"/> Sport package	€ 270,000
<input type="checkbox"/> Hybrid package	€ 224,000
<input type="checkbox"/> Silent package	€ 135,000
<input type="checkbox"/> Hull Vane	€ 182,000
<input type="checkbox"/> Minotti package	€ 280,000
<input type="checkbox"/> Bowers & Wilkins package	€ 39,000
<input type="checkbox"/> Heated bathroom floors	€ 19,500
<input type="checkbox"/> Fine marbles in luxury areas	€ 100,000
<input type="checkbox"/> Bed linen, bath and deck towels by Pratesi	€ 55,000
<input type="checkbox"/> Interior scent diffusion	€ 4,500
<input type="checkbox"/> Sundeck cinema	€ 12,000
<input type="checkbox"/> Crew call buttons	€ 8,000
<input type="checkbox"/> Miele electric BBQ on sundeck	€ 4,500
<input type="checkbox"/> Ice dispenser and fridge in sun deck bar	€ 8,000
<input type="checkbox"/> 2 x Miele wine coolers on sundeck	€ 9,000
<input type="checkbox"/> Forward sunpad on main deck	€ 9,100
<input type="checkbox"/> Panasonic bow camera	€ 4,500
<input type="checkbox"/> Sundeck TV wall & bar	€ 55,000
<input type="checkbox"/> Sundeck pool Riviera Wave 255 Public	€ 29,900
<input type="checkbox"/> 9 Underwater lights	€ 24,000
<input type="checkbox"/> VSAT Intellian V60	€ 35,000
<input type="checkbox"/> Deluxe cushions	€ 24,000
<input type="checkbox"/> "All weather" package for main deck and sun deck (IR heating)	€ 9,500
<input type="checkbox"/> Ribbon 45 Reventon (chase boat)	€ 1,200,000

## PAYMENT TERMS:

Contract signature	20%
Keel laying	20%
Main engines at the yard	25%
Interior installation start	20%
Launch	10%
Delivery	5%

## BUILD TIME:

20 months

\* More options are available at [bedynamiq.com](http://bedynamiq.com)





*GTT 135*





*GTT 135*



Rhodium Silver Metallic





*GTT 135*



Bright Atlantic Blue Metallic / Rhodium Silver Metallic





*GTT 135*



Brown Sugar Metallic / Satin Pearl





*GTT 135*



D  
Y  
N  
A  
M  
I  
Q





*GTT 135*





GTT 135





*GTT 135*



D Y N A M I Q





*GTT 135*





*GTT 135*





# STRINGENT STANDARDS

***GTT 135***

In order to create a perfect yacht, from the outset Dynamiq decided to comply with the strictest requirements for comfort and safety. Every Dynamiq yacht is built in accordance with the latest Large Yacht Code (LY4) commercial regulations. This not only makes them ultra safe, but also means they can be chartered to provide an income for their owners.

Dynamiq and its partners are deeply aware of the need for sustainability. We strongly believe that eco-friendly yachts are a requirement for today's owners and their guests. That is why our yachts feature fuel-efficient hulls and reduced air-conditioning loads thanks to special XIR laminated glass.

We are genuinely committed to protecting the world's oceans, coastlines and the global ecology by reducing fuel consumption and emissions through innovative waste management solutions. All Dynamiq yachts are designed and built to meet the strict environmental standards of RINA's Green Star Plus notation.

Moreover, intensive research into reducing sound and vibration and the use of modern insulation materials create a near silent yacht with exceptional acoustic privacy between cabins. These elevated levels of comfort for passengers and crew have been rewarded with RINA's prestigious Comfort Class notation.





*GTT 135*





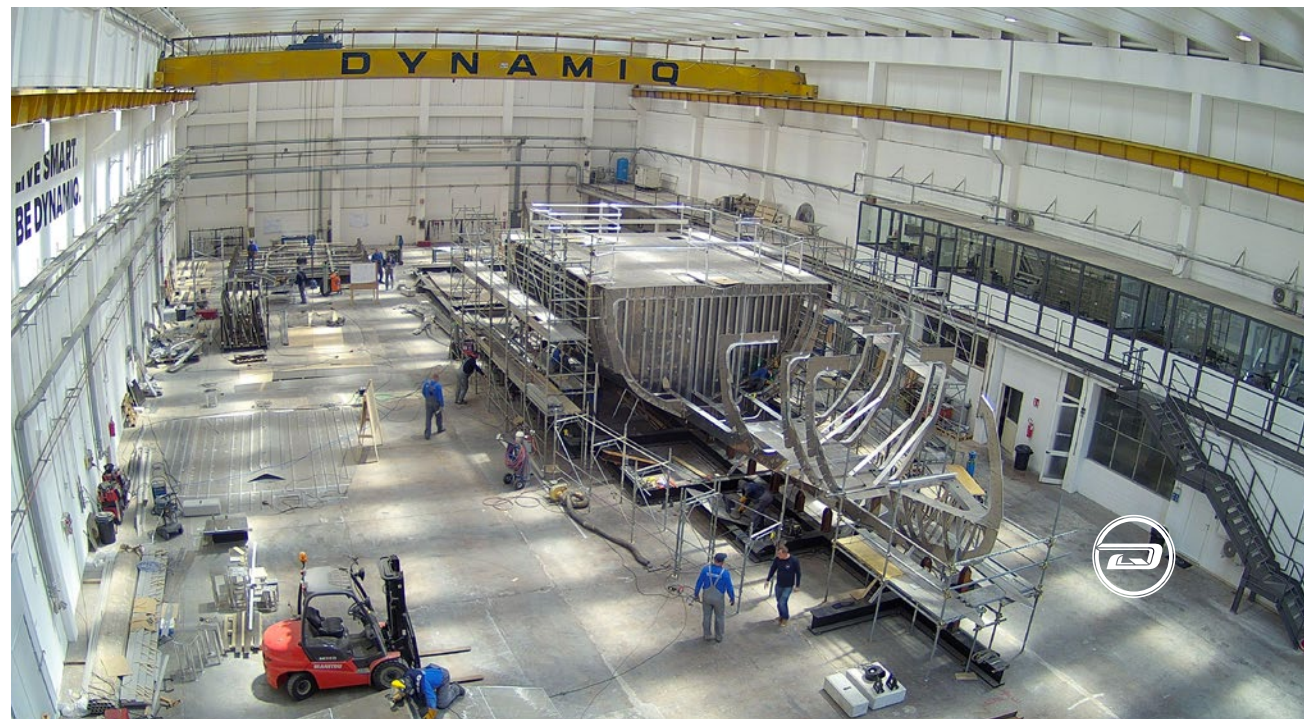
# THE SHIPYARD

Dynamiq is a private shipyard founded in 2011 and owned by yacht broker and designer Sergei Dobroserdov. His main strategy with Dynamiq was to create a well-organised and owner/broker-friendly facility where clients and their reps can enjoy a creative and transparent construction process.

Dynamiq is the only shipyard in Italy building yachts to North European standards that are 100% created by leading naval architects and structural or mechanical engineering companies in the Netherlands. Dynamiq production is located in the picturesque area of Massa on Italy's Tuscan coast. This modern and high-tech facility is fitted out for building the full range of Dynamiq superyachts up to 50 metres in length with various powertrain options, including hybrid technology. The Dynamiq Yachts production facility offers the highest standards of working environment and quality control.

Come to Dynamiq if you want:

1. Original contemporary design;
2. Top-quality full-aluminum construction;
3. Complete Dutch engineering with naval architecture by Van Oossanen;
4. Top-class contractors and leading brand partners from interior design to high-end audio-visual;
5. Competitive Italian prices.





*GTT 135*





# DYNAMIQ RANGE

## THE GRAN TURISMO TRANSATLANTIC SERIES



Model	GTT 115	GTT 135	GTT 160	GTT 165
LOA	35.5 m / 115'	41 m / 135'	49.5 m / 162'	50 m / 165'
Beam	7.1 m / 23' 3"	8.2 m / 26' 11"	8.7 m / 28' 6"	9 m / 29' 6"
Draft	1.45 m / 4' 9"	1.8 m / 5' 11"	2 m / 6' 6"	2 m / 6' 6"
Max speed	21 knots	21 knots	17 knots	19 knots
Range	3,400 nm @ 10 knots	3,000 nm @ 12 knots	4,000 nm @ 10 knots	4,000 nm @ 12 knots
Engines	2x MAN, 1,213 kW	2x MAN, 1,213 kW	2x MAN i6, 537 kW	2x MAN V12, 1,029 kW
Hull / superstructure	Aluminium, 5083	Aluminium, 5083	Aluminium, 5083	Aluminium, 5083
Tonnage	199 GT	299 GT	399 GT	450 GT
Guests	10 in 5 cabins	11 in 5 cabins	12 in 6 cabins	12 in 6 cabins
Crew	6 in 3 cabins	6 in 3 cabins	8 in 4 cabins	9 in 5 cabins
Build time	18 months	20 months	24 months	28 months
Price	starting at 11,500,000 €	starting at 16,500,000 €	starting at 19,900,000 €	starting at 24,750,000 €





# DYNAMIQ RANGE

## THE GLOBAL SERIES



Model	G 290 Jaeger	G 300	G 350	G 380	G 440
LOA	29 m / 95'	30.5 m / 100'	35 m / 114'	38 m / 125'	44 m / 144'
Beam	8 m / 26' 3"	7.5 m / 24' 7"	8.5 m / 27' 10"	8.5 m / 27' 10"	9.2 m / 30' 2"
Draft	1.7 m / 5' 7"	1.45 m / 4' 9"	1.8 m / 5' 3"	2.4 m / 7' 10"	2 m / 6' 6"
Max speed	16 knots	19 knots	16 knots	15 knots	17 knots
Range	3,500 nm @ 10 knots	3,000 nm @ 10 knots	3,100 nm @ 10 knots	4,500 nm @ 10 knots	5,000 nm @ 10 knots
Engines	2x MAN, 882 kW	2x MAN, 882 kW	2x MAN, 882 kW	2x MAN, 735 kW	2x MAN, 882 kW
Hull / superstructure	Aluminium, 5083	Aluminium, 5083	Aluminium, 5083	Steel / Aluminium	Aluminium, 5083
Tonnage	220 GT	200 GT	299 GT	385 GT	499 GT
Guests	10 in 5 cabins	10 in 4 cabins	10 in 5 cabins	10 in 5 cabins	10 in 5 cabins
Crew	4 in 2 cabins	4 in 2 cabins	6 in 3 cabins	7 in 4 cabins	7 in 4 cabins
Build time	22 months	22 months	22 months	24 months	28 months
Price	starting at 9,900,000 €	starting at 9,400,000 €	starting at 16,450,000 €	starting at 18,100,000 €	starting at 23,500,000 €








# LIVE SMART. BE DYNAMIQ.



Via Massa Avenza 85, 54100 Massa, Italy

[www.bedynamiq.com](http://www.bedynamiq.com)

 @bedynamiq