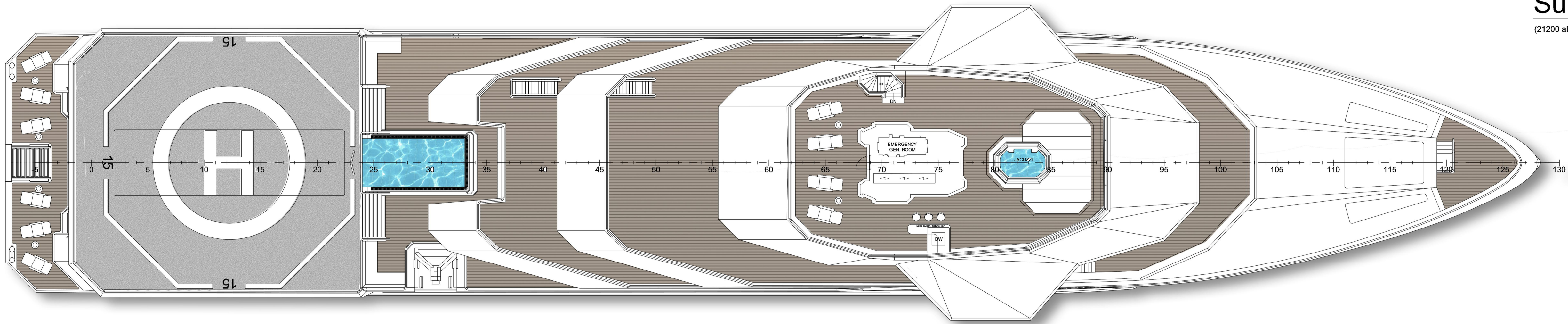


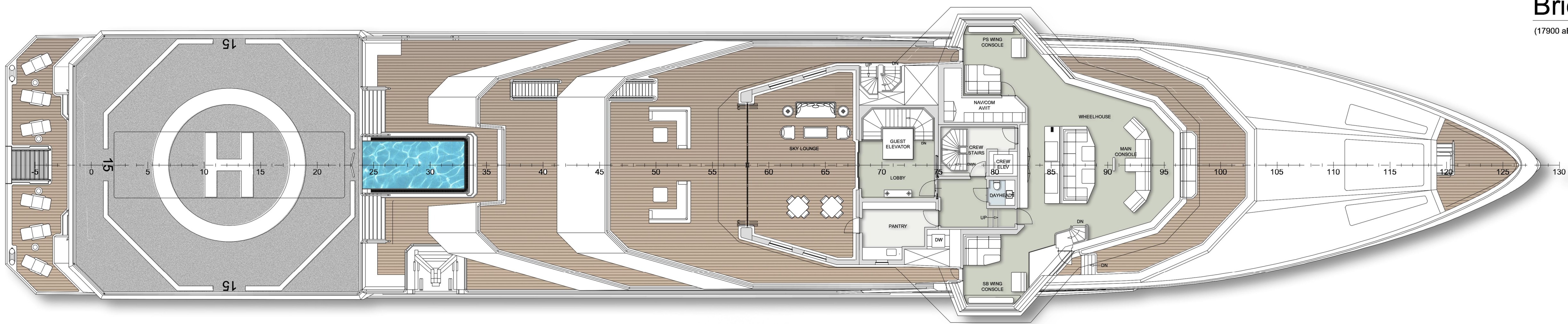
SB Profile



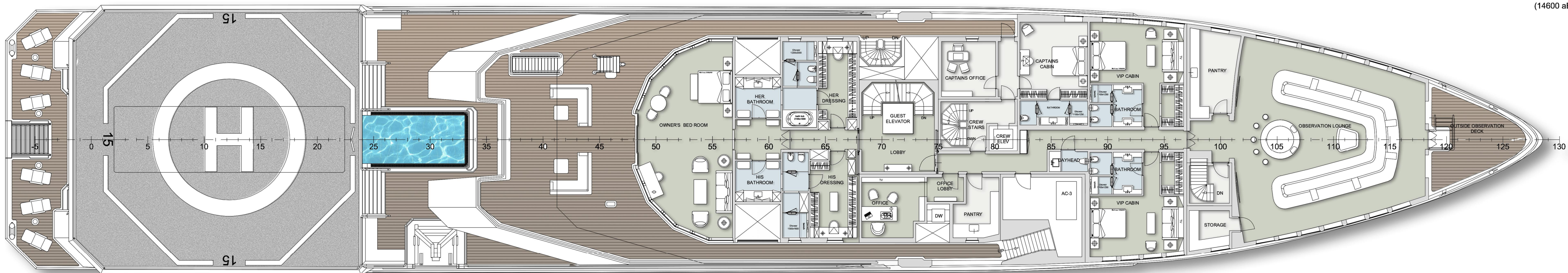
Sun Deck
(21200 aBL)



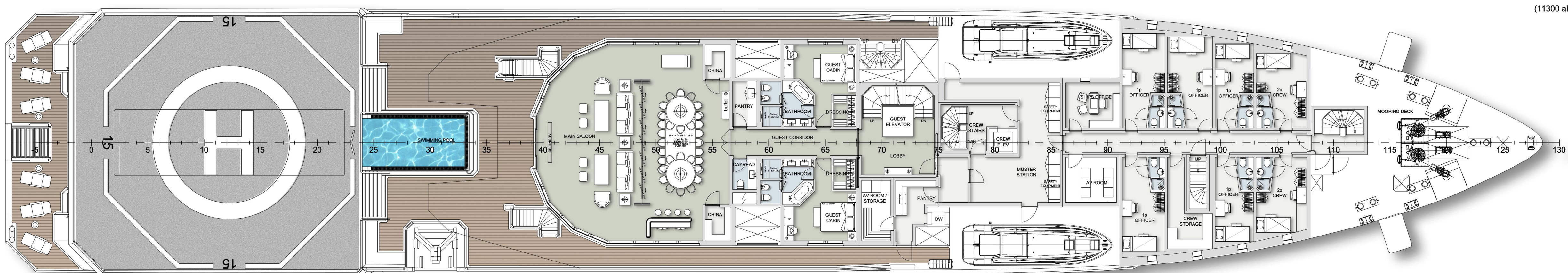
Bridge Deck
(17300 aBL)



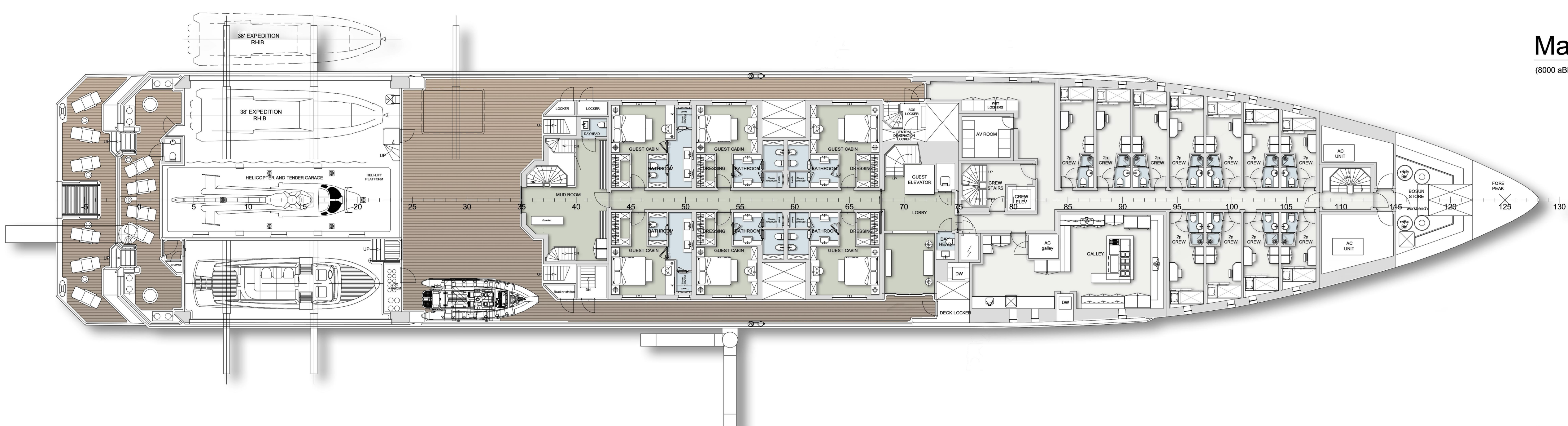
Owner's Deck
(14600 aBL)



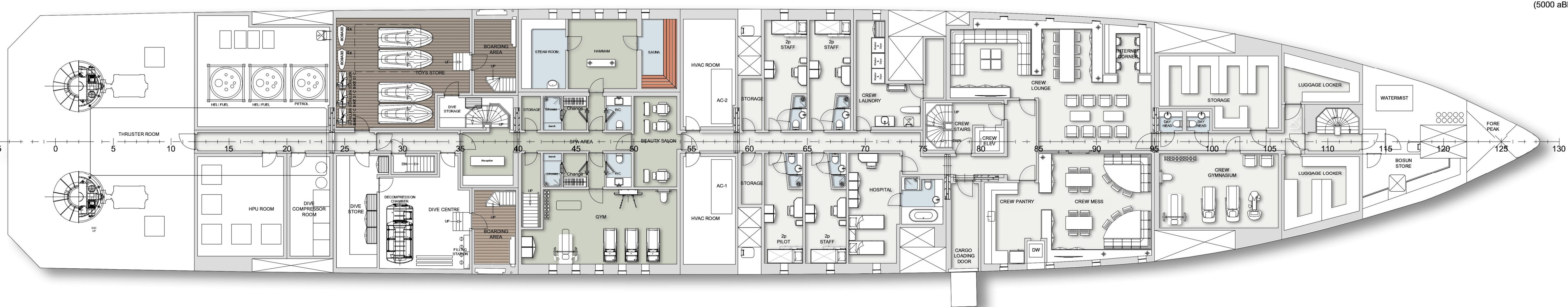
Upper Deck
(11300 aBL)



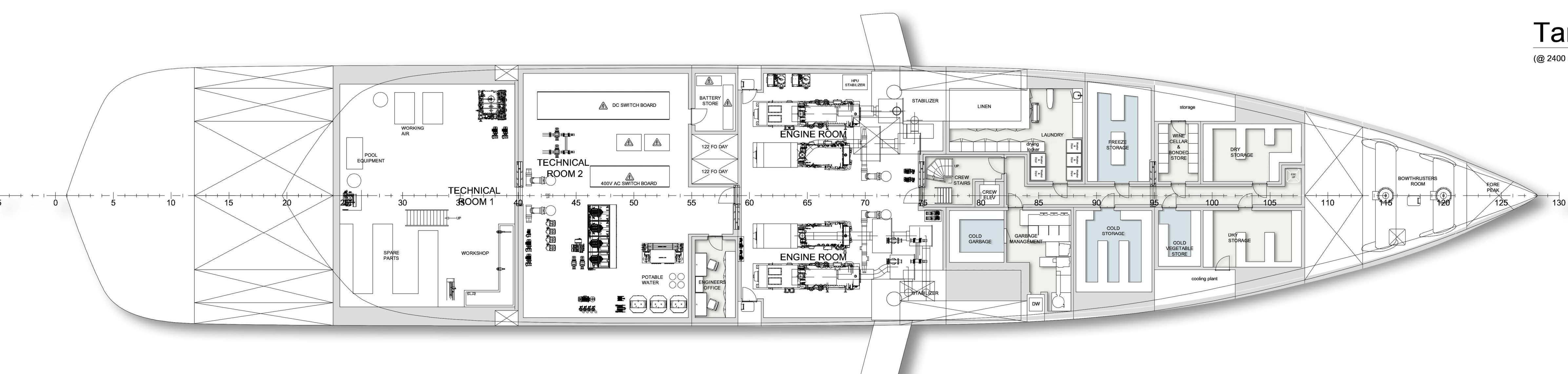
Main Deck
(8000 aBL)



Lower Deck
(5000 aBL)



Tank Deck
(@ 2400 aBL)



Main dimensions		
Length over all [LOA]		95.00 m
Length waterline [LWL]		94.85 m
Beam molded [Bm]		16.00 m
Draught design [T]		5.15 m
DAMEN DAMEN SHIPYARDS GORINCHEM		
<small>Industrieweg 10 P.O. Box 1 4201 AA Gorinchem Tel: +31 (0) 183 03 98 11 www.damen.nl 4202 MB Gorinchem Tel: +31 (0) 183 03 21 89</small>		
General Arrangement		
SeaXplorer 95		
Format	A0-2	Project ID
Scale	1:150	Sheet
Units	mm	Date
Drawn	SSp & MH	Plan
Checked	Standard Type	SX 95
Approved	S.C.No.	Project Shiptype
Drawing ID	2XXXXX - SX 95	GA
IFS Doc No.		001 2017.09.12
COPYRIGHT DAMEN SHIPYARDS GROUP		