

AMELS 

· MODERN ELEGANCE REDEFINED ·

AMELS 200



LIMITED EDITIONS ▶





# AMELS 200

*Tom Heywood*







## AMELS 200

# · MODERN ELEGANCE REDEFINED ·

The Amels 200 is a large volume and very comfortable 60-metre yacht. The design started with a comprehensive effort by our in-house naval architects and engineers, creating a hybrid power system and ground-breaking emission reductions. After unveiling the design, we delivered the first yacht, VOLPINI 2, in 2018. The design's next yacht is now under construction.

Enjoy beautiful views from sheltered decks, with elevator access from the Guest Suites to Sun Deck. Together with exterior designer Tim Heywood, we've introduced additional features including a larger Sun Deck, more outdoor space on Bridge Deck aft, full-height windows in the Owners Suite and a longer Swim Platform. We are very proud of the Amels 200, a collector's item for the next generation.



**Rose Damen**  
*Managing Director*

*Rose Damen*



# CONTENTS

05

▷ LIMITED EDITIONS

06

▷ EXTERIOR DESIGN

14

▷ CUSTOMISATION

15

▷ INTERIORS

31

▷ SHOWCASE - *VOLPINI 2*

39

▷ GENERAL ARRANGEMENT

43

▷ SPECIFICATIONS

49

▷ BUILDER







# LIMITED EDITIONS



*Rose Damen explains the Amels Limited Editions approach.*

Rose Damen  
Commercial Director

LIMITED EDITIONS ▶

## *Top Dutch quality, delivered faster*

The Amels 200 is an Amels Limited Editions yacht – the perfect balance between full custom and semi-custom. Since 2005 we have delivered 40 Limited Editions yachts from our yard, located in the Netherlands at the centre of Dutch shipbuilding excellence.

Why choose a Limited Editions yacht?

- Delivered much faster than full custom
- Enduring beauty created by the world's top designers
- The absolute highest Amels quality and finish
- Exceptional comfort, reliability and proven performance
- Your choice of interior designer
- Greater value, on time and on budget
- Designs from 60 to 83 metres







EXTERIOR DESIGN ▸

# The master of exteriors

British designer Tim Heywood created the Amels 200's beautiful, sweeping exterior lines. In his latest Limited Editions design collaboration with the Amels team, Tim accentuates his signature athletic structures and shapely curves with an original and modern character.

“The Amels 200 is inspired, like all my work, by nature. The design echoes a cruising swan ruffling her feathers. The sweeping profile lines are enhanced by the twists in the surfaces, which give her an enriched and interesting form with light and shade effects to each deck level. She is unique and original and exceeds my wildest expectations.”



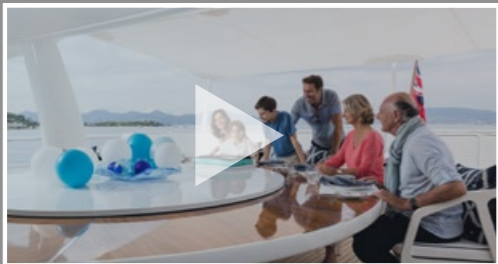
Award-winning British designer  
Tim Heywood

*“To create a great design, you have to deeply understand the essence of yachting.”*

*Tim Heywood*







Enjoying family life on board the design's first delivery, VOLPINI 2

Length: 60 metres (197 ft) | Beam: 10.6 metres (35 ft) | Gross Tonnage: 1,015

*Reflections shimmer across her surface, revealing the immaculate quality of her finishing.  
It's a testament to the level of Amels craftsmanship in every detail.*







*"Amels yachts are global, seagoing stable vessels in which you can place your trust unreservedly. And in doing so, you find freedom."*

Nathan McFadyen, Captain VOLPINI 2  
(the first delivery of the Amels 200 design)

# The great wide open

## Built for outdoor living, built to see the world

- Total 493 square metres of exterior deck spaces (5,307 sq ft)
- 4,500 nautical miles range @ 13 knots
- Top speed 15.5 knots
- 8.2-metre limo tender (27 ft)
- Compliant with the highest emissions regulations set by the International Maritime Organization and the United States Environmental Protection Agency

The generous beam and logical layout ensure your Amels 200 has plenty of outdoor spaces for sunning, swimming, dining and entertaining. The yacht is not only built for outdoor living, but she is also built to see the world with robust ocean-going engineering. So find your favourite spot on deck to watch the world's most beautiful coastlines and ocean vistas go by.







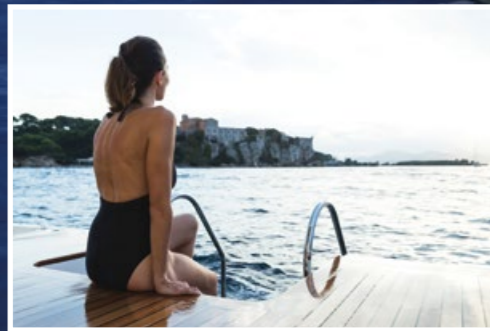
# High volume with lift

All four luxury decks have high ceiling heights while optimising the full 10.6-metre beam (35 ft). The result is a high-volume yacht (1,015 Gross Tonnage) for her length. All her space is brought together in masterly form by designer Tim Heywood and connected with a four-deck central elevator for easy access.





*The Beach Club is a multifunctional area that we can customise to your favourite ocean activities – for example diving, surfing, fitness, games or make it a dedicated space for children.*



*Optional integrated hydraulic swimming stairs on the Swim Platform.*

# Beach Club and Swim Platform

## *A newly extended exclusive space to enjoy the sea*

- Beach Club with sauna, steam shower room and changing room (26 square metres / 280 sq ft) and spacious 2-metre ceiling heights (almost 7 ft)
- Interior stair access from the Main Deck saloon ensures you can use the Beach Club while the yacht is underway and privately while in the marina
- Extended fixed stern 31 square-metre Swim Platform (329 sq ft) in teak, with removable swim ladder.







*Sunshine to share on the extended Bridge Deck aft and Swim Platform.*

# Sun Deck aft

## *Top deck luxury with Sky Lounge*

174 square metres of outdoor and indoor space (1,873 sq ft)

Four decks above the water, the Sun Deck offers spectacular views and privacy. The 36 square-metre air-conditioned Sky Lounge with bar, massage and lobby (388 sq ft) creates tantalising possibilities for relaxation, wellness and entertaining. With the concertina doors open, the Sun Deck is a welcoming mix of sunshine, shade and service. You can reach Sun Deck with the four-deck elevator and central stairs, as well as exterior stairs aft and crew stairs forward.







*"Our Customer Care team provides fast response to support you and your crew anywhere in the world. We are your partner not just for the 1 year warranty period (option of 2 years), but also for an enjoyable and trouble-free ownership experience."*

Onno Piesens, Manager Customer Care team



# Sun Deck forward

From the Sky Lounge lobby, the curved glass door slides open to reveal the outdoor bar, the 7-person Jacuzzi (2,300 litres / 603 US gallons) and sunbeds. The extended Sun Deck and glass railings celebrate exceptional views.

*The deck forward of the jacuzzi easily converts to a Touch-and-Go helipad for aircraft up to 3,000 kg Maximum Take Off Weight, such as the Airbus ACH135 pictured.*







# Owners folding balcony

Virtually the whole side of the full-beam Main Deck Owners Suite folds open to create a huge 12 square-metre balcony (130 sq ft).

Let the calming voice of the sea and fresh ocean air inside as you sleep and awaken to a private al fresco breakfast for two.

# Hybrid trendsetter

Our highly efficient hybrid electrical system with battery power uses smart, proven technology to manage the complex electrical demands of the yachting lifestyle (everything from jacuzzi heating to air-conditioning and lighting). As the system works 24/7 invisibly in the background, seamlessly improving every moment of life on board, you benefit from lower operating expenses while reducing the impact on the environment. Take a closer look at the Amels 200 hybrid electrical system and sustainability solutions on pages 47-48.







*New full height windows on Main Deck ensure there is no shortage of natural light and stunning views.*



## *Eyecatcher*

### **Create your personal palette**

Colours and finishes reflect your personal style and give your Amels 200 individual character. Together with exterior designer Tim Heywood, the Amels design team is ready to bring your colour scheme to life with the absolute highest quality Amels finish. Our paint managers are unrivalled in the industry, while our world-leading paint facilities include modern climate and humidity controlled covered drydocks.







INTERIOR INSPIRATION by  
*Luxury Projects*

---



*Liquid metal finish in the window frames adds a glossy touch, together with bronze profile detailing, and mirrored in the furniture selection.*

## Main Saloon

The Amels 200 offers a total luxury interior area of 382 square metres (4,112 sq ft) over four decks. The high volume (1,015 Gross Tonnage) reflects the generous ceiling heights of up to 2.2 metres (7 ft 2 inches) on all four guest decks. Luxury Project's light design for the 59 square-metre saloon (632 sq ft) explores LED technology. Indirect light from the ceiling dome and hidden sources creates unique ambiances with different settings.







# Dining

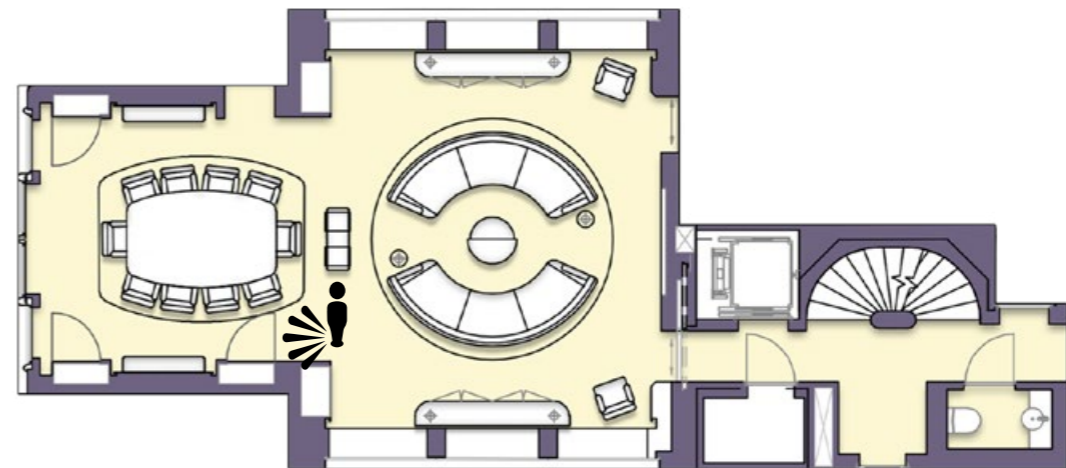


## Laura Pomponi

Since founding her Ancona-based atelier Luxury Projects in 2008, Italian designer Laura Pomponi has rapidly built up an impressive portfolio of yacht interiors for her clients. She has a strong background in superyacht construction, contributing to her deep understanding of design specifically for the yachting lifestyle. Today Luxury Projects has an impressive team of architects, designers and experts in lighting and construction, but Laura's fanatical attention to detail ensures she remains the driving force behind the studio's innovative and tailor-made interiors.

See pages 17 to 25 ▷ ▷

From Main Deck aft, your visitors enter through sliding glass doors to the dining area and saloon. This welcoming reception is the perfect space to combine business with pleasure.







*Luxury Project's concept elegantly incorporates the yacht's functionality – such as the door leading downstairs to the Beach Club/Gym, which provides for internal access while underway or in the marina.*







# Owners Suite

The Owners Suite continues the theme of natural surfaces and textures with a touch of liquid metal. The design offers space for clients to bring their own artworks for a personal touch. A total of 88 square metres (950 sq ft) comprises:

- Stateroom and lounge
- Bathroom and dressing
- Office







*A marble bathtub adorns the Owners Bathroom, gleaming with coloured glass and mirrors.*

*Natural woods, leather and fabric walls match panels of satin matt finish for a soothing and sophisticated ambiance.*







## Owners Office

Architectural forms and thoughtful lighting create a energetic space to focus in the 12.5 square-metre Owners Office (135 sq ft).

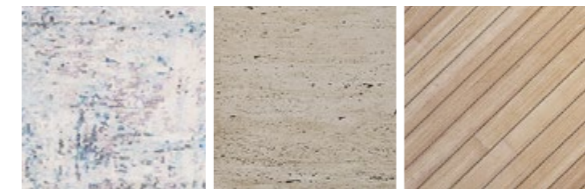
Natural coloured wood panels with backlit shelving meet sunlit fabrics and shining bronze details.







# Bridge Deck Lounge

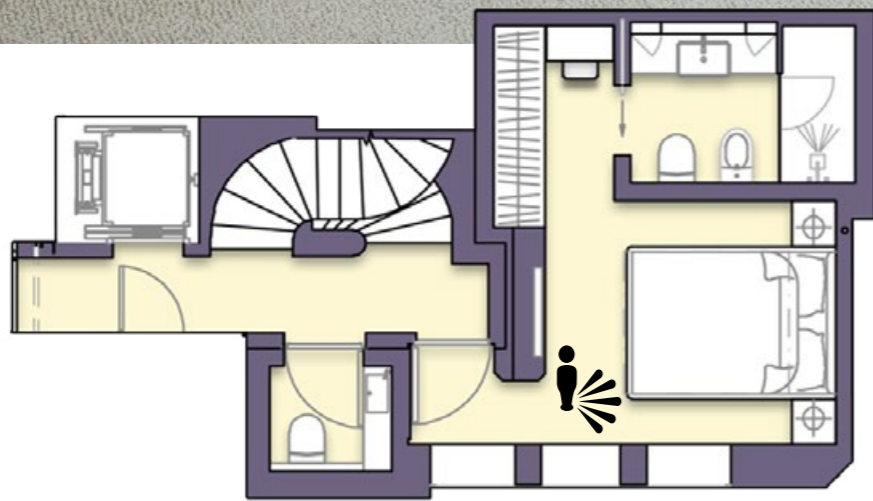


BRIDGE DECK  
LOUNGE  
DETAILS

- Wide-body 44 square metres (474 sq ft)
- 75 inch screen surrounded by travertine marble wall finish
- Intricate double dome ceiling lighting design
- Beautiful fishbone flooring and magnificent grand piano







## VIP SUITE

The VIP Suite is an exclusive guest accommodation on Bridge Deck. The dressing and vanity lead to the bathroom. Leather, wood veneer and soft carpets create a welcoming touch, personalised by the owner's artwork selection.







# GUEST SUITES

On Lower Deck there is no compromise on comfort and luxury. All four Guest Suites are bright and spacious with exceptional 2.2 metre ceiling heights (7 ft 2 inches). Moreover, your guests can make use of the central elevator and staircase to reach all the way up to Sun Deck.

- Two of the suites can be easily converted from doubles to twins.







*The Sky Lounge's special decorative wall finish frames the integrated screen. The lounge connects with the spacious aft deck with the bi-fold glass doors open. The top deck pool and indoor-outdoor feeling is enhanced with a starboard massage room.*

## SUN DECK SKY LOUNGE

Head to the top deck with the central elevator and staircase. The 36 square-metre Sky Lounge (388 sq ft) is a multifunctional air-conditioned area with massage, day head and lobby. Bi-fold glass panels open to the aft deck.







## BEACH CLUB

The 26 square-metre Beach Club (280 sq ft) has spacious 2-metre ceiling heights (almost 7 ft), with stairs leading up to the generous Swim Platform. The Beach Club offers a gym and fitness area, sauna, steam shower room and changing room – all accessible underway via the Main Deck Saloon stairs.







OUR EXPERIENCE WITH  
 INTERIOR DESIGNERS:  
 BONESTEEL TROUT HALL

CHRISTIAN LIAIGRE

DONALD STARKEY

ENZO ENEA

LAURA SESSA

**LUXURY PROJECTS**

MICHAEL LEACH

NUVOLARI LENARD

PETER HEUVELMANS

REDMAN WHITELEY DIXON

RÉMI TESSIER

**REYMOND LANGTON**

STUDIO INDIGO

TERENCE DISDALE

WETZELS BROWN

WINCH DESIGN



*The four-deck elevator and central staircase of dark walnut connects the Guest Suites right up to the Sun Deck. Reymond Langton's design of tonal leather panels on the staircase wall are divided by nickel inserts, and fronted by a four-deck artistic glass feature panel.*



INTERIOR INSPIRATION by  
*Reymond Langton*



The illustrious UK-based trio of Pascale Reymond, Andrew Langton and Jason Macaree is enthraling the international scene with designs that are as beautiful as they are functional. Their individual blend of skills and professional experience are complementary, resulting in a much sought-after design team.







## OWNERS SUITE

Forward on Main Deck, the 88 square-metre Owners Suite (950 sq ft) is a haven of sunlight and fresh breezes thanks to 6 floor-to-ceiling windows and the folding balcony.



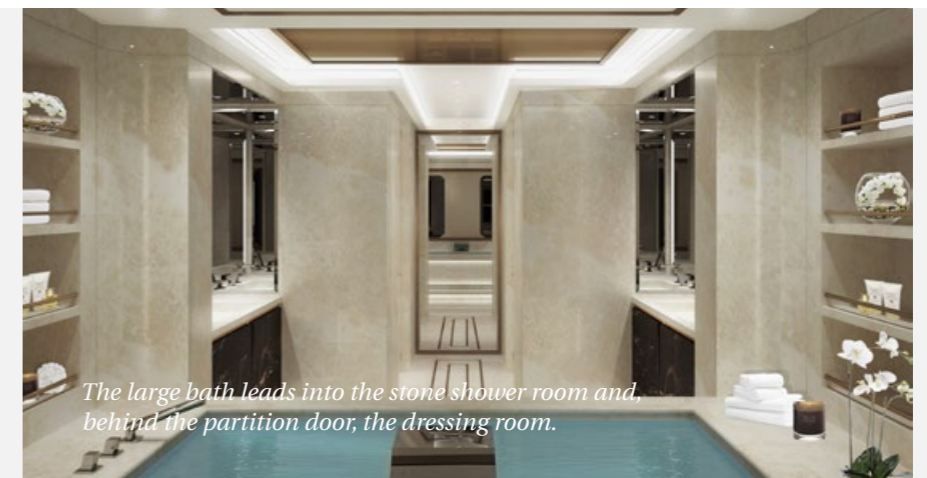




*The lounge area with folding balcony is a private space to begin the day together.*



*A light, modern design created with light Figured Tanganika and pale taupe leathers. Subtle artistic details offer a relaxed, inviting atmosphere.*



*The large bath leads into the stone shower room and, behind the partition door, the dressing room.*



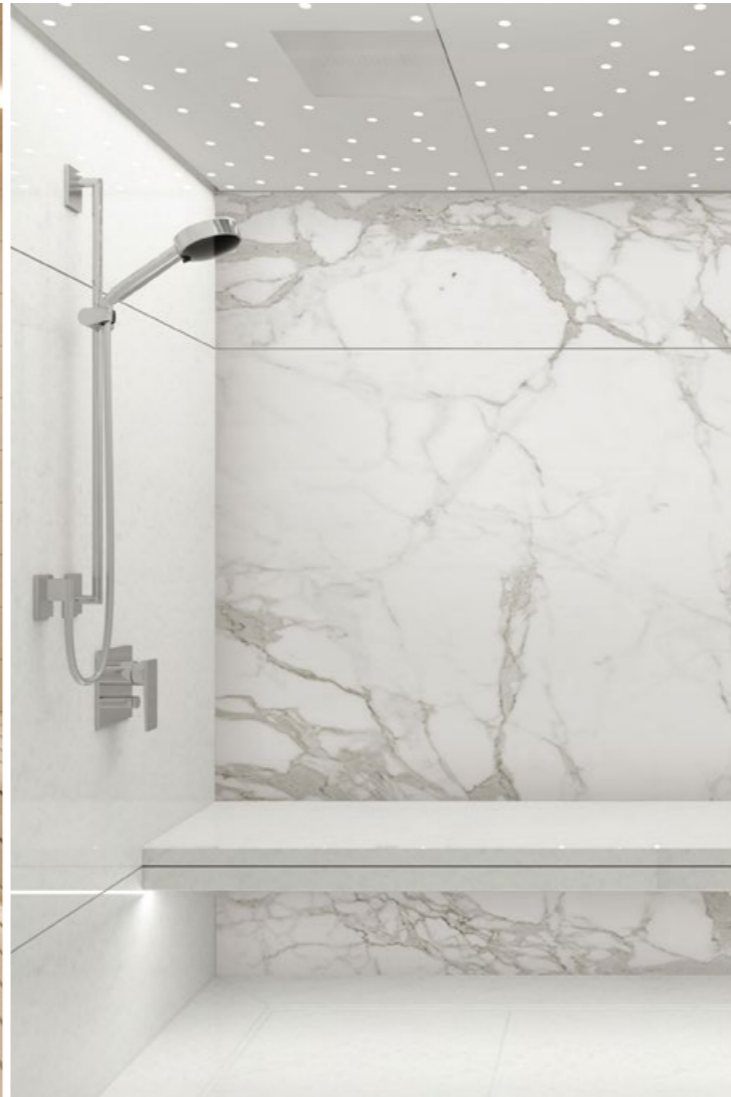


## BEACH CLUB

- 26 square-metre Beach Club (280 sq ft) and spacious 2-metre ceiling heights (almost 7 ft)
- Gym area, sauna, steam shower room and changing room
- Internal access via Main Deck







*From the Main Deck Saloon, stairs lead down to the Beach Club corridor. This internal access to the gym, sauna and steam shower is ideal for use underway or in the marina.*

The Beach Club on Lower Deck has light wood with mirror accents and a bright aqua blue artwork panel reflecting the sea beyond the large transom door. The spa area features a steam room in light marble with dynamic white and grey calacatta, and sauna in pale hemlock.







SHOWCASE ▶



# VOLPINI 2



Watch the video of VOLPINI 2

Delivered in 2018, VOLPINI 2 is a yacht of many 'firsts'. She is the first build of Tim Heywood's fabulous new design for our Limited Editions range (at 57.7 metres in length and known as the Amels 188, the design later changed to the 60-metre Amels 200). She is also the world's first IMO Tier III compliant new build yacht and the first Amels Hybrid Power yacht. The yacht is Amels' first collaboration with Reymond Langton who created the interior design. But regardless of all her firsts, we are most proud of VOLPINI 2 being second – the second Amels yacht for our client.







## VOLPINI 2

|                    |                       |
|--------------------|-----------------------|
| Length overall     | 57.70 metres (188 ft) |
| Beam               | 10.60 metres (35 ft)  |
| Gross Tonnage      | 970                   |
| Builder            | AMELS                 |
| Naval architecture | AMELS                 |
| Exterior design    | Tim Heywood           |
| Interior design    | Reymond Langton       |
| Delivery           | 2018                  |

SHOWCASE ▶







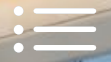
Reach the air-conditioned Sky Lounge gym and massage room on Sun Deck via the four-deck elevator and central staircase.



*“Enjoy sheltered sunshine and stunning views on Sun Deck aft.”*







VOLPINI 2's owners added many personal touches and their family style to Reymond Langton's interior concept for the Main Deck Saloon and Dining.







*“With the folding balcony open, the Owners Suite lounge is the perfect spot to start a new book as you listen to the gentle sound of the sea.”*







The Owners Suite on Main Deck with folding balcony includes the stateroom and lounge as well as a separate office and bathroom/dressing.

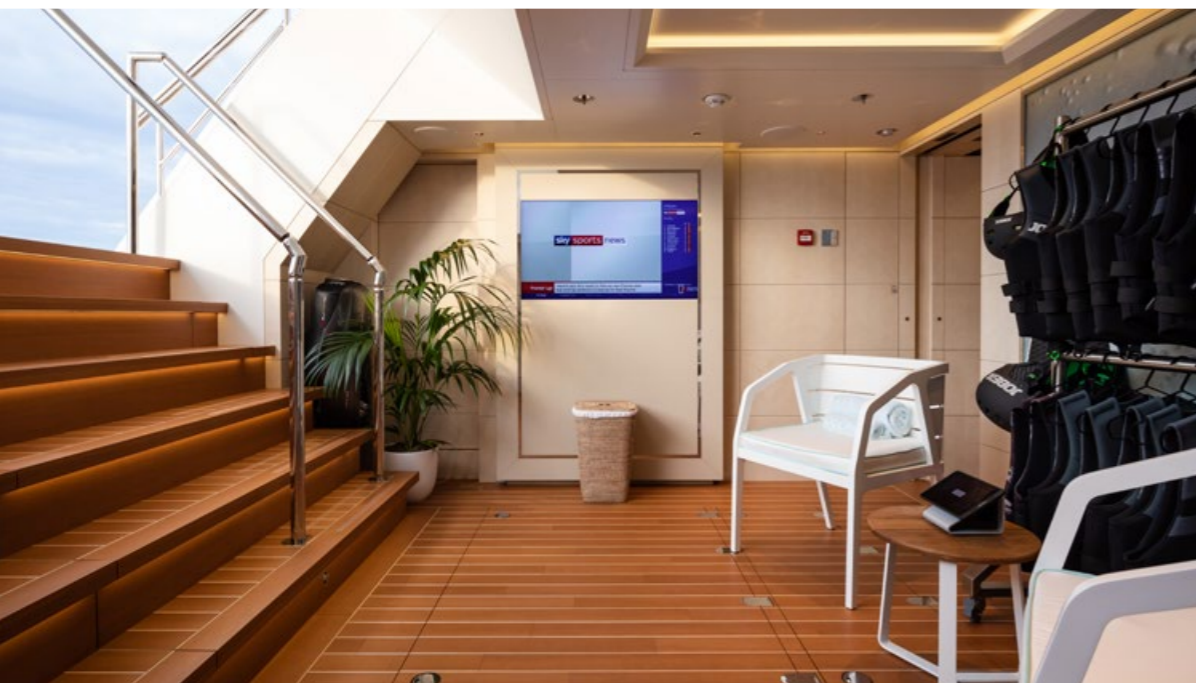


Accommodate your special guests in the Bridge Deck VIP Suite.





From the Beach Club with sauna, steam shower and changing area, step up to the Swim Platform, now stretched to almost double the size on the Amels 200. VOLPINI's 2 owners decided on an integrated swim stairs for easy access to the water.

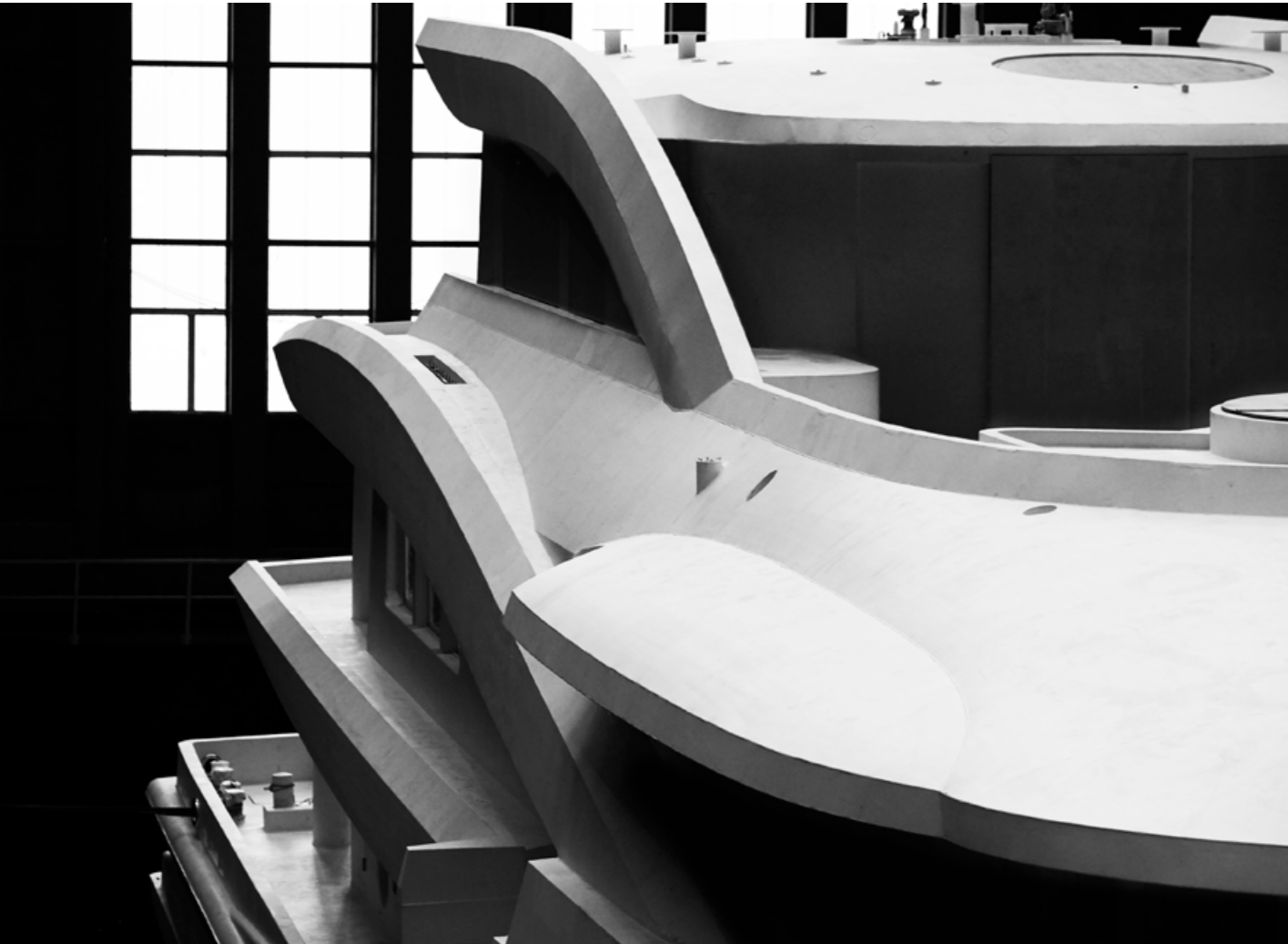


*“Arrive in style with the tender and step up the transom stairs to Main Deck.”*





SHOWCASE ▶



## UNDER CONSTRUCTION

The next Amels 200 takes shape in covered, climate-controlled facilities at our yard on the Dutch North Sea. Before her scheduled completion, hundreds of craftsmen and women work daily to transform her steel and aluminium into exterior and interior perfection.







# GENERAL ARRANGEMENT AND SPECIFICATIONS

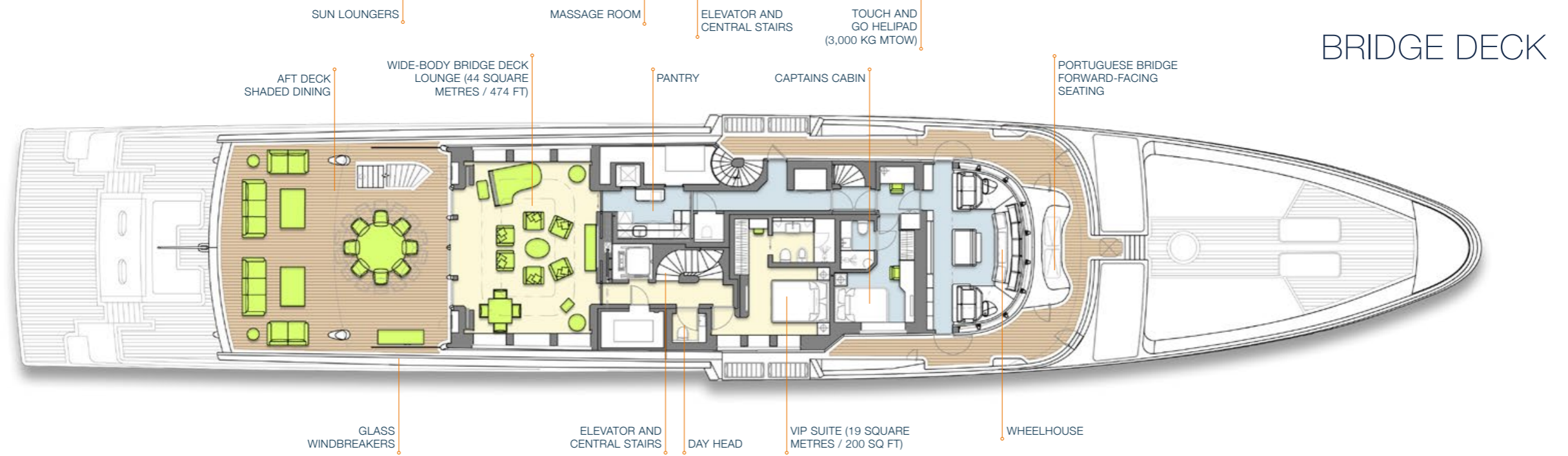
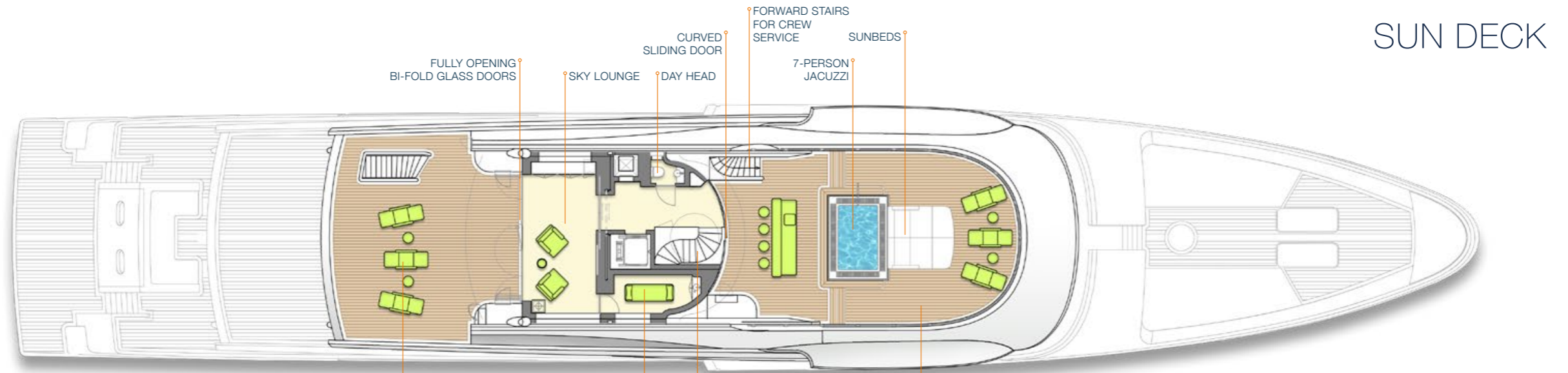






# • GENERAL ARRANGEMENT

- LUXURY INTERIOR
- OWNERS' SUPPLIED FURNITURE
- UPGRADED CREW INTERIOR



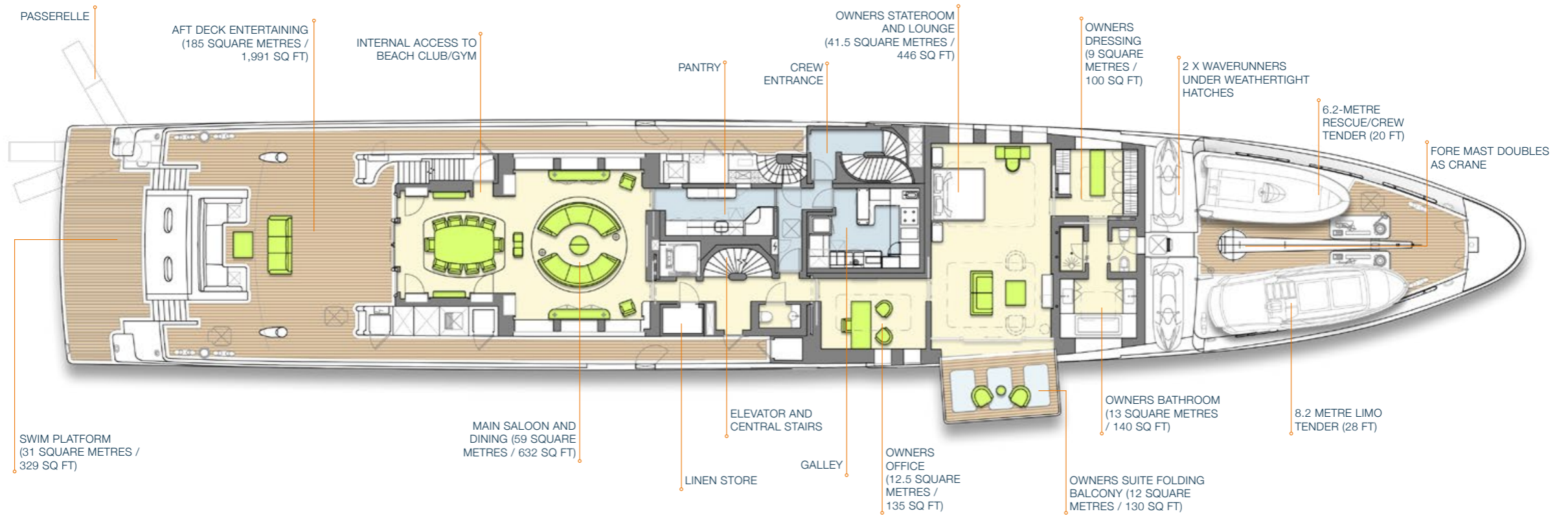




# GENERAL ARRANGEMENT

- LUXURY INTERIOR
- OWNERS' SUPPLIED FURNITURE
- UPGRADED CREW INTERIOR

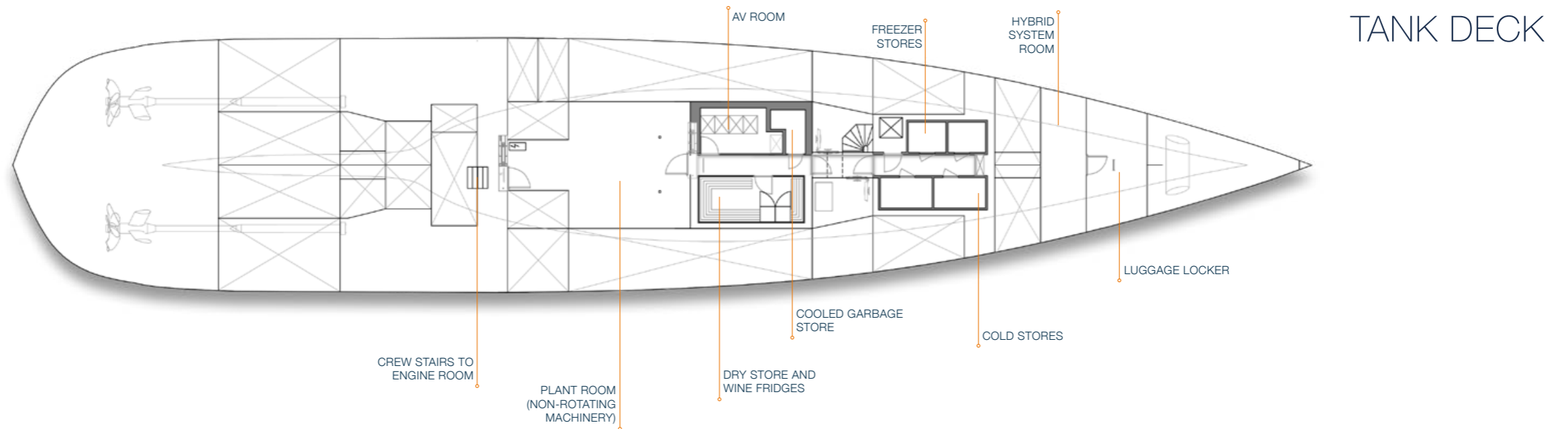
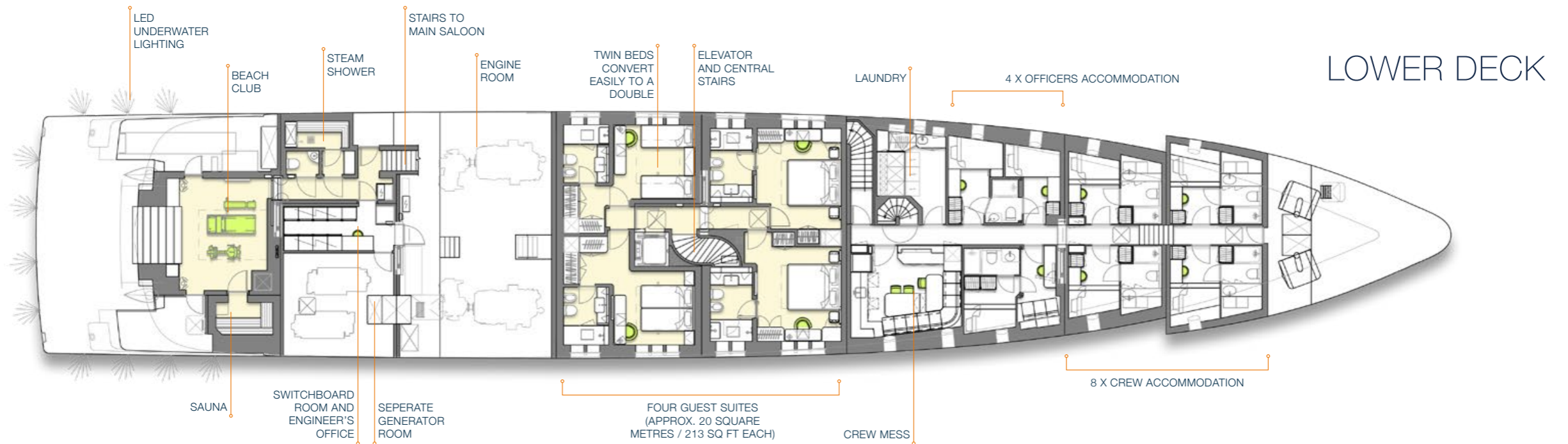
## MAIN DECK







- LUXURY INTERIOR
- OWNERS' SUPPLIED FURNITURE
- UPGRADED CREW INTERIOR





# • SPECIFICATIONS

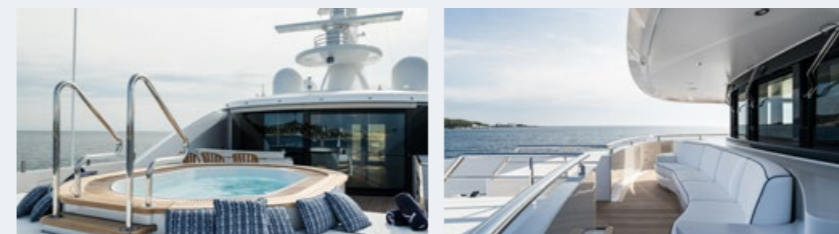
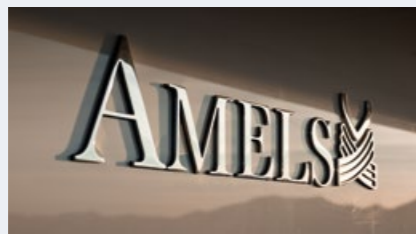
## CONSTRUCTION

The Amels 200 is a five deck, full displacement luxury yacht, completed in modern covered facilities with the highest standard materials and renowned Amels craftsmanship.



## MAIN DIMENSIONS

|                    |                              |
|--------------------|------------------------------|
| Length overall     | <b>60.00</b> metres (197 ft) |
| Length waterline   | <b>54.27</b> metres (178 ft) |
| Beam               | <b>10.62</b> metres (35 ft)  |
| Depth (midships)   | <b>5.20</b> metres (17 ft)   |
| Draught (midships) | <b>3.40</b> metres (11 ft)   |
| Gross Tonnage      | <b>1,015</b>                 |



## MATERIALS

- ✓ Steel hull with scantlings, welds, plating and stiffeners engineered by Amels for minimum noise and vibrations
- ✓ Aluminium superstructure
- ✓ Faired and painted to perfection with the highest acceptance criteria in modern, climate controlled facilities
- ✓ Teak decks with first class grade quarter sawn 55-mm wide teak
- ✓ Stainless-steel railing
- ✓ Tinted double-glazed windows

## SAFETY AND COMPLIANCE

- ✓ Classification Lloyd's Register 100A1, SSC, Yacht Mono G6 ✕ LMC, UMS, SCM, ECO, Green Passport
- ✓ Fully IMO Tier III compliant and US EPA Tier 4 compliant
- ✓ Flag state Cayman Islands (Ask about Marshall Islands or alternatives)
- ✓ Fully certified according to MCA LY3
- ✓ Certified SOLAS 6.2-metre rescue/crew tender (20 ft) deployed with foredeck crane
- ✓ Watertight integrity with one-compartment flooding stability and buoyancy in the event of collision or damage
- ✓ High-pressure water mist fire-fighting system, automatic fire doors, fire flaps, A60 fire-resistant escape routes, helipad fire-fighting and foam monitors, smoke and fire detection
- ✓ Emergency generator on board, powering all primary safety and navigations systems
- ✓ GMDSS Area 3, EPIRB and radar transponders
- ✓ Ship security system







## PERFORMANCE

Our Amels design team, in cooperation with our Damen Research Laboratory, invested heavily in the Amels 200's naval architecture to ensure outstanding seakeeping and manoeuvrability.



### SPEED AND RANGE

- 15.5 knots maximum at 100% MCR engine power
- 13 knots cruising
- 4,500 nautical miles range @ 13 knots
- 152,000 litres fuel capacity (40,154 US gallons)

### PROPULSION AND POWER

- 2 x MTU 12V4000 M53 diesels, 1,380 kW @ 1,800 rpm each, resilient mounts
- IMO Tier III and US EPA Tier 4 compliant, slashing harmful emissions by 70 percent
- Selective Catalytic Reduction (SCR) filters
- Exhaust acoustic silencers and seawater cooling / below-waterline discharge
- Reintjes WAF 763 gearboxes
- Rubber Design shaft line arrangement
- Fixed-pitch five-blade CuNiAl propellers

### NAVIGATION, MOORING AND ANCHORING

- Integrated ECDIS bridge, 5 x TFT display screens, wing stations
- Bow thruster electrically driven 130 kW
- 2 x galvanised steel HHP fully balanced anchors with brushed stainless steel anchor pockets in the bow
- 2 x reversible foredeck two-speed vertical anchor winches with polished stainless steel warping head
- 2 x capstans on aft deck with polished stainless steel warping head

### HOTEL POWER

- 2 x generator sets in primary-secondary configuration, housed in a separate generator room (1 x Scania D19 / 250 kW, 1 x Scania D19 / 203 kW) 3-phase 230/400 VAC, 50 Hz
- Hybrid electrical power system with battery bank (2 x 28 kWh / peak 84 kW) for high efficiency and lower emissions
- IMO Tier III and US EPA Tier 4 compliant, slashing harmful emissions by 70 percent
- Selective Catalytic Reduction (SCR) filters and soot filters
- Emergency generator set 109 kW
- 250 kVA shorepower converter for global power input

### WATER CAPACITY

- Fresh water tank capacity of 24,500 litres (6,470 US gallons)
- 2 x reverse-osmosis watermakers 9,000 litres per day each (2,378 US gallons)
- 3 x greywater tanks with total 22,000 litres capacity (5,811 US gallons) for cruising in no-discharge zones





## ACCOMMODATION AND SERVICE

The Amels design team set out to create a luxury experience way beyond your expectations, supporting your crew every step of the way for exceptional service at sea.



### Luxury suites for up to 12 guests

- ✓ Full beam Owners Suite with stateroom, dressing, bathroom, office and lounge with folding balcony (total area 88 square metres / 950 sq ft)
- ✓ 1 x VIP Suite on Bridge Deck
- ✓ 4 x Guest Suites on Lower Deck (approx. 20 square metres / 213 sq ft each) with optional extra Pullman beds

### Luxury guest spaces

- ✓ 493 square metres total luxury exterior spaces (5,307 sq ft)
- ✓ 382 square metres total luxury interior spaces (4,112 sq ft)
- ✓ Generous 2.2-metre ceiling heights (7 ft 2 inches) in luxury spaces
- ✓ Main Deck Saloon and Dining (approx 59 square metres / 632 sq ft) sliding doors to aft deck and interior stairs to Lower Deck Beach Club and wellness centre
- ✓ Wide-body Bridge Deck Lounge (44 square metres / 474 sq ft) and aft deck shaded dining
- ✓ Foredeck Portuguese bridge seating under the wheelhouse brow
- ✓ Sun Deck Sky Lounge, massage, lobby (36 square metres / 388 sq ft) with foredeck jacuzzi and sunbeds, aft deck sun loungers
- ✓ Central guest elevator, serving four decks from Lower Deck to Sun Deck
- ✓ Central staircase serving four decks
- ✓ Luxury LED lighting
- ✓ Heated stone bathroom floors and mirrors

### COMFORT

- 2 x stabiliser fins with active roll damping for at anchor (zero speed) and underway
- Bilge keels for passive roll damping
- Amels full displacement hull form for maximum comfort
- Ventilation and air-conditioning Heinen & Hopman HVAC system designed for (summer) conditions of outside air 35°C @ 75% relative humidity / Inside 22°C @ 55% relative humidity
- Floating ceilings, walls and floors for maximum sound insulation

### NOISE LEVELS

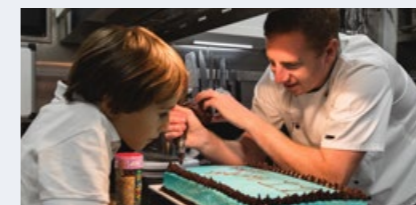
|                            | AT ANCHOR | UNDERWAY AT SPEED<br>80% MCR ENGINE POWER |
|----------------------------|-----------|---|
| • Bridge Deck Lounge       | 47 dB(A)  | 50 dB(A)                                  |
| • VIP Suite on Bridge Deck | 47 dB(A)  | 50 dB(A)                                  |
| • Owners Suite             | 47 dB(A)  | 50 dB(A)                                  |
| • Owners Office            | 47 dB(A)  | 50 dB(A)                                  |
| • Main Saloon              | 47 dB(A)  | 55 dB(A)                                  |
| • Guest Suites, Lower Deck | 47 dB(A)  | 53 dB(A)                                  |
| • Crew cabins, Lower Deck  | 50 dB(A)  | 54 dB(A)                                  |

### ENTERTAINMENT, DOMOTICA AND COMMUNICATIONS (OWNERS OPTIONS)

- Satellite TV/audio, telephone, intercom
- 4K video and audio on demand, party mode
- 4G Internet in luxury areas
- Blind and curtain control
- Lighting and light scene control
- Steward call system

### SERVICE

- 12 crew + Captain
- Crew staircases serving all decks
- Dedicated crew entrances, crew workstation
- Laundry and linen store, luggage locker
- Main Deck galley and pantry, Lower Deck mess for the complete crew to eat together





## ACTIVITIES

Whether relaxing in quiet shade with spectacular views, enjoying a culinary masterpiece with friends or satisfying your thrill-seeking side, there is always lots to do on board.

### Beach Club, jacuzzi and wellness

- ✓ Lower Deck Beach Club with sauna, steam shower (26 square metres / 280 sq ft)
- ✓ Spacious 2-metre ceiling heights (almost 7 ft) and internal stairwell to Main Deck saloon (for Beach Club use underway or in the marina)
- ✓ Top-hinged Beach Club transom door with built-in shower (thermostatic mixing)
- ✓ Fixed stern 31 square-metre Swim Platform (329 sq ft) in teak, removable swim ladder
- ✓ Option of integrated underwater stairs in the Swim Platform
- ✓ Jacuzzi (7-person, 2,300 litres / 603 US gallon) on Sun Deck with sunbeds
- ✓ Sun Deck air-conditioned Sky Lounge (option as gym / fitness)
- ✓ Sun Deck air-conditioned massage room



### Watersports, tenders and toy storage

- ✓ 8.2-metre luxury tender (28 ft) stowed on foredeck (ask about tender options and deployment)
- ✓ 2 x waverunners stored on foredeck under weathertight hydraulically operated hatches
- ✓ Petrol store for 15 x 10-litre jerry cans
- ✓ Foredeck crane with 3,000 kg capacity (doubles as fore mast for navigation lights)
- ✓ Seabobs, slides, inflatables
- ✓ Dive equipment, wetsuits
- ✓ Boat whips

### Stern passerelle

- ✓ 5.5 metres (18 ft), teak, illuminated on both sides, retractable with electric hydraulic power
- ✓ Telescoping and adjustable vertical and horizontal position (up to 60 degree swing portside)

### Helicopter

- ✓ For example: Leonardo AW109, Airbus H135, Bell 407
- ✓ Sun Deck landing area strengthened for maximum take-off weight of 3,000 kg
- ✓ Lashing points for temporary sea fastening
- ✓ Removable railings
- ✓ Heli locker with fire-fighting system and foam tanks

### Fine dining and provisioning

- ✓ Outdoor dining on Bridge Deck aft
- ✓ Indoor dining on Main Deck
- ✓ Bar, cocktail and lounge areas on Sun Deck, Bridge Deck and Main Deck
- ✓ Dumb waiter food lift from Main Deck to Sun Deck
- ✓ Main Deck galley, pantry and china store (27 square metres / 294 sq ft)
- ✓ Tank Deck stores (total 18 square metres / 190 sq ft)
  - ✓ Dry store with 2 x wine fridges for 232 bottles in controlled temperature zones (7.3 square metres / 79 sq ft)
  - ✓ 2 x cold stores (total 5 square metres / 54 sq ft)
  - ✓ 2 x freezer stores (total 3.5 square metres / 38 sq ft)
  - ✓ Cooled garbage store (1.8 square metres / 19 sq ft)

### Business

- ✓ Owners Office for private meetings (12.5 square metres / 135 sq ft)
- ✓ Full global AV/IT communications systems with 4K video display (flush in cabinet) - owners options







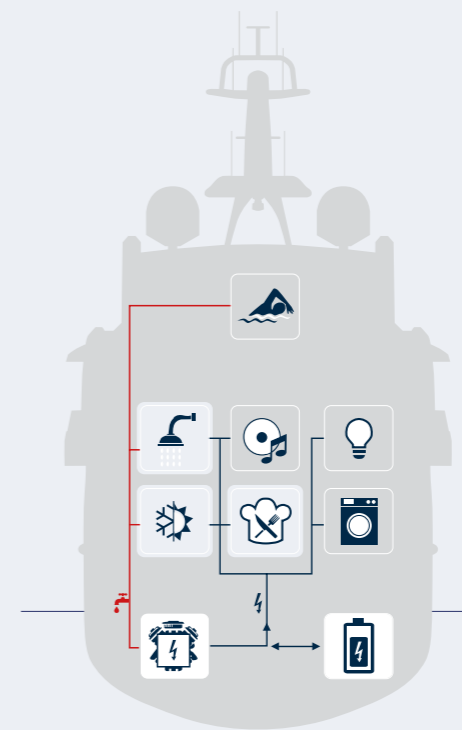
## HOW DOES HYBRID POWER BENEFIT YOU?

We are leading a new generation of engineering best practice to manage electrical power on board responsibly and use energy more efficiently. It's a holistic approach that seamlessly improves every moment of the yachting experience.

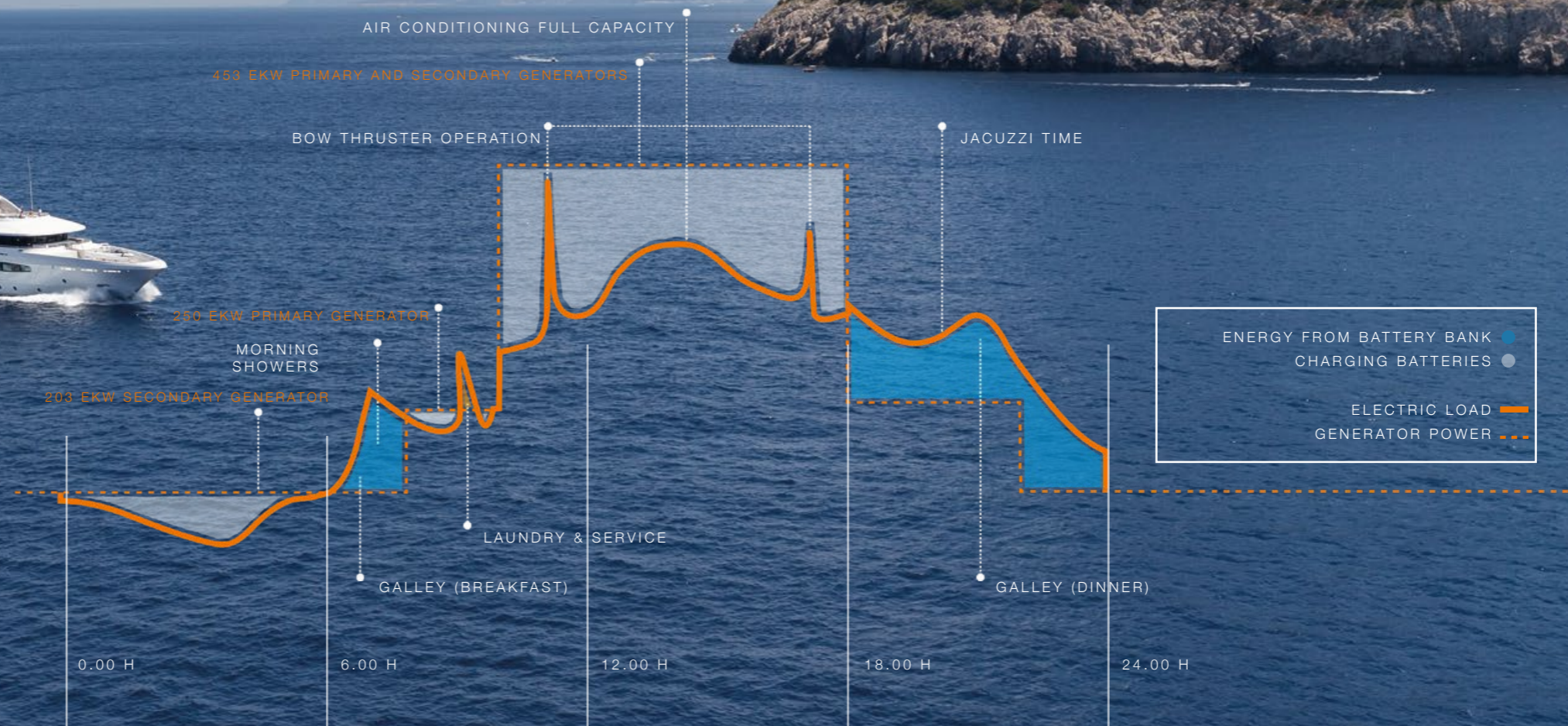
The Amels Hybrid Power switchboard combines energy from three sources – battery banks, generator power and engine heat recovery. Throughout the day and night, a smart power management system automatically adjusts the balance of engine and battery power to meet the fluctuating hotel electrical load demands with optimal efficiency.

The result is lower fuel consumption, lower emissions and potential operating cost savings of €100,000 or more a year, based on our extensive fleet analysis and research programme.

- Battery banks (2 x 28 kWh / peak 84 kW) for peak shaving and managed load shedding
- 2 x generator sets in primary-secondary configuration, housed in a separate generator room (1 x Scania DI9 / 250 eKW, 1 x Scania DI9 / 203 eKW) 3-phase 230/400 VAC, 50 Hz
- Additional heat exchangers in the engine cooling water system recover energy for the hot water system, HVAC reheating and jacuzzi heating



## A DAY IN THE LIFE OF YOUR AMELS HYBRID ELECTRICAL POWER SYSTEM



*VOLPINI 2, delivered in 2018, has proven the technology behind our highly efficient hybrid electrical power system.*







## FIRST TO REACH NEW ENVIRONMENTAL MILESTONE

In 2018 Amels was the first yacht builder in the world to deliver an International Maritime Organization Tier III compliant superyacht. The regulations require yachts to slash harmful emissions by 70 percent. We took the lead in collaboration with our subcontractors to custom engineer a holistic solution, integrating the diesel engines, Selective Catalytic Reduction systems, silencers and soot filters into the engine room without sacrificing luxury spaces or compromising low noise and vibrations.

- Minimum range on SCRs @ 13 knots  
1,700 nautical miles
- Urea capacity 2,000 litres (528 US gallons)

## Sustainability and efficiency

- Lower fuel consumption thanks to the highly efficient hull designed with Computational Fluid Dynamics analysis
- Calculated insulation package for hull and superstructure to reduce HVAC power demands
- Careful specification of double glass outer panes with heat reflection layer to reduce heat dissipation from sunlight into the interior
- Energy saving LED lighting for both interiors and exteriors
- Drinking water purification system (remineralisation) for pleasant tasting and safe water, saving up to 5,000 plastic bottles a year
- Waste water treatment plant: effluent quality as per IMO MARPOL MEPC.159 and US Coast Guard approved (type II) for foreign vessels visiting US coastal waters
- Chilled garbage store on Tank Deck, garbage management plan and recycling
- Bio friendly anti-fouling paint certified TBT free
- Lloyd's Register Green Passport, rigorously documenting materials for recycling and disposal
- Lloyd's Register ECO notation







*Located directly on the North Sea, Vlissingen City is the largest superyacht building facility in the Netherlands with the world's best superyacht supply chain on our doorstep.*

# WE DELIVER WHAT WE PROMISE

The heart of our Amels superyacht production is our famous Vlissingen City yard in the Netherlands, which is also the head office of Damen Yachting.

## INHOUSE DESIGN AND ENGINEERING



*“What drives us? It's the challenge of creating the yacht envisioned in the client's imagination, bringing the designer's artistry to life, while applying the technical insight and innovation that sets an Amels yacht apart.”*

**Adriaan Roose**, Product Manager Amels



## PROJECT MANAGEMENT



*“You have an entire shipyard of people who share the same work ethos, dedication and desire to ensure that each and every project absolutely meets and exceeds the client's wishes. It forms an unwavering motivation that steers us all to deliver complete client satisfaction.”*

**Sjoerd van den Broek**, Manager Projects







# CUSTOMER CARE

Our job as builder doesn't end at delivery. Wherever you are in the world, the industry's best Customer Care team is standing by. They manage any warranty points and provide advice and services. They know our yachts inside out and can quickly source original spare parts and suppliers. Contact the team directly at: [customer care@damenyachting.com](mailto:customer care@damenyachting.com)



*"It's about being proactive, working with captains and crews to ensure the uninterrupted Amels and Damen Yachting experience for our clients. Basically, we want to do everything we can to create the highest standard experience. That's what Customer Care means to us."*

**Onno Piesens**, Head of Customer Care



*"The team provided exceptional ground support on the way to Gibraltar. On board they continued to help us enormously with all manner of items. It's a very talented team. Whenever we have a question, they are always easy to reach."*

**Simon Ladbrooke**, Captain ELIXIR



*"I had a great experience with after-sales, and on the last boat as well. They're a great team there and they do a good job. It's proactive. We've had non-stop support from the team. It's an essential part of a new build."*

**Simon Truelove**, Captain PLVS VLTRA







# *True collectors' items*

We have delivered 65 new yachts including Amels Full Custom yachts and yachts from our Amels Limited Editions range. Even the Amels yachts built in the 1980s and 1990s are all sailing successfully to this day – beautiful examples of the finest yacht building that will still be admired 100 years after they were built.







Damen Yachting Portfolio

# YOUR WORLD IN RANGE

Create the most unforgettable luxury yachting experiences with our market-leading portfolio. At Damen Yachting, the yacht building division of the Damen Shipyards Group, we build Amels yachts, SeaXplorer yachts as well as specialist Yacht Support vessels. Which yacht suits your yachting lifestyle?

“As Damen Yachting we apply our talents across a wide portfolio of yachts and services to create the absolute top luxury yacht experiences for you. I’m very proud to lead such a dedicated team of yacht builders.”



Rose Damen  
Managing Director

AMELS 

**DAMEN**  
yachting



*Enjoy your finest moments*

## LIMITED EDITIONS

Our Limited Editions yachts are world-renowned. Our innovative business model of upfront investment in engineering and construction, while maximising customisation for owners, represents the perfect balance between full custom and semicustom – and reduces delivery time from several years to as little as a few months.





## YACHT SUPPORT

### *Maximise the moment*

Owners take vessels from our purpose-built Yacht Support range all over the world to support superyacht operations and make the best use of precious time at sea. Enjoy exotic destinations and dive spots with less developed infrastructure without turning the mother yacht into a cargo and equipment carrier.



## SEAXPLORER

### *Discover your world beyond limits*

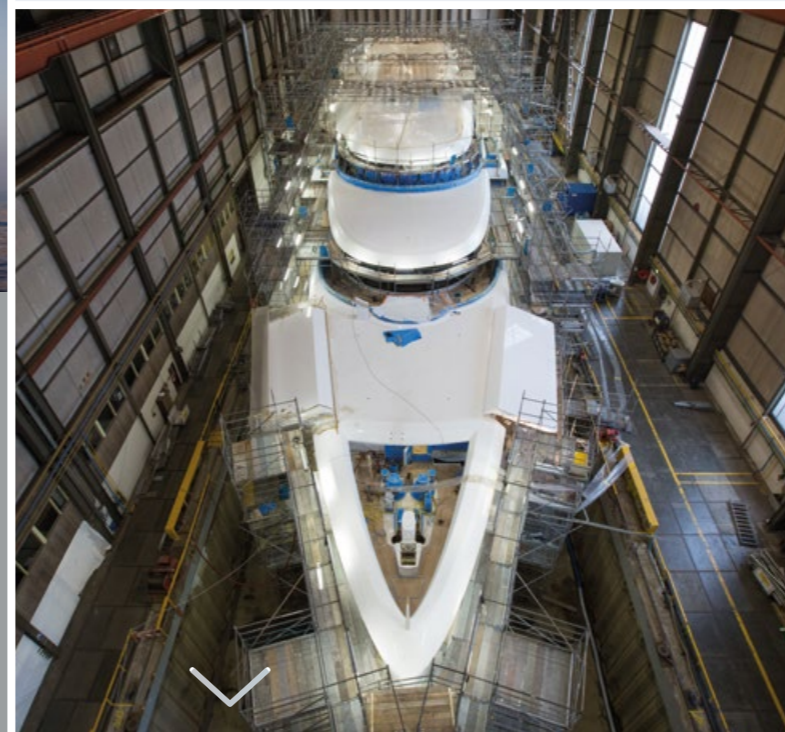
Our SeaXplorer premiere expedition yachts offer serious global exploring capability, combined with luxury refinement at home in any marina. These yachts are the ultimate crossover of high-volume luxury accommodation with a true expedition platform designed to take you anywhere in the world in complete safety, comfort and style.



## FULL CUSTOM

### *The art of yacht building*

For a complete custom yacht with your own exterior and interior designers, we offer Full Custom. There's a lot of pedigree behind our custom building, including 35 Amels Full Custom yachts. Our top team of yacht building experts has long experience collaborating with world-renowned designers and architects.

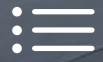


## REFIT

### *We breathe new life into your yacht*

With Amels and Damen Yachting Refit we offer owners of both our fleet of yachts and other brands comprehensive yacht refit services. From planned maintenance to complete transformations, we have an impressive track record.

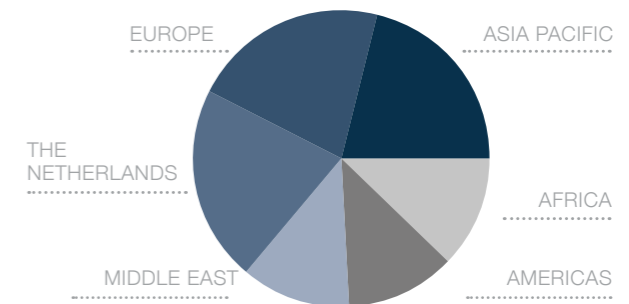




# The Damen family

An icon of modern Dutch industrial entrepreneurship, the Damen family is not only a committed 100% owner of the Amels brand but also very much involved in the day-to-day business at Damen Yachting. Since acquiring Amels in 1991, the Damen family has continued to invest in its yacht building business, which is today a cornerstone of its iconic shipbuilding group.

Taking over his father's shipyard in 1969 with six employees, Chairman Kommer Damen has grown the business into Damen Shipyards Group, the world's leading specialist shipbuilder with 12,000 employees and 35 shipyards around the globe. Damen builds an incredible portfolio of high-tech vessels – from sophisticated navy combatants to high-speed Coast Guard craft and deep-sea research vessels.



**DAMEN**

35  
YARDS  
WORLDWIDE

6,000  
VESSELS  
DELIVERED

12,000  
DAMEN  
EMPLOYEES

ANNUAL  
TURNOVER  
€2 BILLION

ACTIVE IN  
100+  
COUNTRIES







# A shipbuilding heritage stretching back centuries

For centuries our hometown of Vlissingen has been the heart of Dutch shipbuilding. Before it officially became a city in 1315, Vlissingen was a thriving fishing port on the North Sea. From the 14th Century it became increasingly important as a centre for building warships for the Dutch Admiralty and trading vessels for the Dutch West India Company. Around 1688, the shipyard complex was expanded – the foundation of the Damen Yachting headquarters today. We are proud to continue the tradition of local shipbuilding expertise. We like to show first-time visitors our historic Royal Schelde headquarters at the yard. The history of Dutch shipbuilding is embodied in the great halls of this magnificent building.



*“The ground beneath our feet is steeped in shipbuilding tradition, a maritime DNA that has shaped our docks and locks, but also the working lives of generations of craftsmen and women. It’s a heritage that we are proud to continue.”*

**Roeland Berrevoets**, Director Operations











AMELS 200 - MODERN ELEGANCE REDEFINED

DAMEN YACHTING  
Koningsweg 2  
4381 NA Vlissingen  
The Netherlands  
+31 118 485 002  
[team@damenyachting.com](mailto:team@damenyachting.com)  
[damenyachting.com](http://damenyachting.com)



DISCLAIMER

All information, specifications, descriptions and images in this brochure are considered preliminary, non-binding and subject to change by Damen Yachting. No images herein may be reproduced in any form without written permission of Damen Yachting.