

## 95 Pearl - CATs



### 2020 PEARL MOTOR YACHTS 95

<b>LOA:</b>	95' (28.96m)	<b>Build Year/Model Year:</b>	2019 / 2020
<b>Beam:</b>	22' (6.71m)	<b>Builder:</b>	PEARL MOTOR YACHTS
<b>Max Draft:</b>	7' 9" (2.36m)	<b>Type:</b>	
<b>Speed:</b>	Cruising 20 Knots Max 24 Knots	<b>Price:</b>	approx. (€6,557,499 EUR) \$7,995,000 USD
<b>VAT Paid:</b>	No Duty Paid	<b>Location:</b>	DANIA BEACH, Florida United States

**NOT AVAILABLE FOR SALE TO U.S RESIDENTS WHILE IN U.S. WATERS.**

---

**95 Pearl - CATs**

### Additional Specifications For 95 Pearl - CATs:

<b>LOA:</b>	95' (28.96m)	<b>Delivery/Model</b>	2020
<b>Beam:</b>	22' (6.71m)	<b>Year:</b>	
<b>Max Draft:</b>	7' 9" (2.36m)	<b>Year Built:</b>	2019
<b>Hull Material:</b>	Fiberglass	<b>Builder:</b>	PEARL MOTOR YACHTS
<b>Tonnage:</b>		<b>Model:</b>	95
<b>Range At Cruise</b>	328	<b>Engines:</b>	1925 HP, Twin, Inboard, Diesel, Caterpillar, C32,
<b>Speed:</b>		<b>Staterooms:</b>	4
<b>Speed:</b>	Cruising 20 Knots	<b>Sleeps:</b>	8
	Max 24 Knots	<b>Heads:</b>	5
<b>Fuel Capacity:</b>	10,000.00 L (2,641.72 Gal)	<b>Crew Quarters:</b>	2
<b>Water Capacity:</b>	1,600.00 L (422.68 Gal)	<b>Crew Berths:</b>	5
<b>Holding Tank:</b>	700.00 L (184.92 Gal)	<b>Classifications:</b>	
<b>Location:</b>	DANIA BEACH, Florida United States	<b>MCA:</b>	<b>ISM:</b>
<b>Price:</b>	approx. (€6,557,499 EUR) \$7,995,000 USD		
<b>Tax Status:</b>	No Duty Paid		

## **Standard Features**

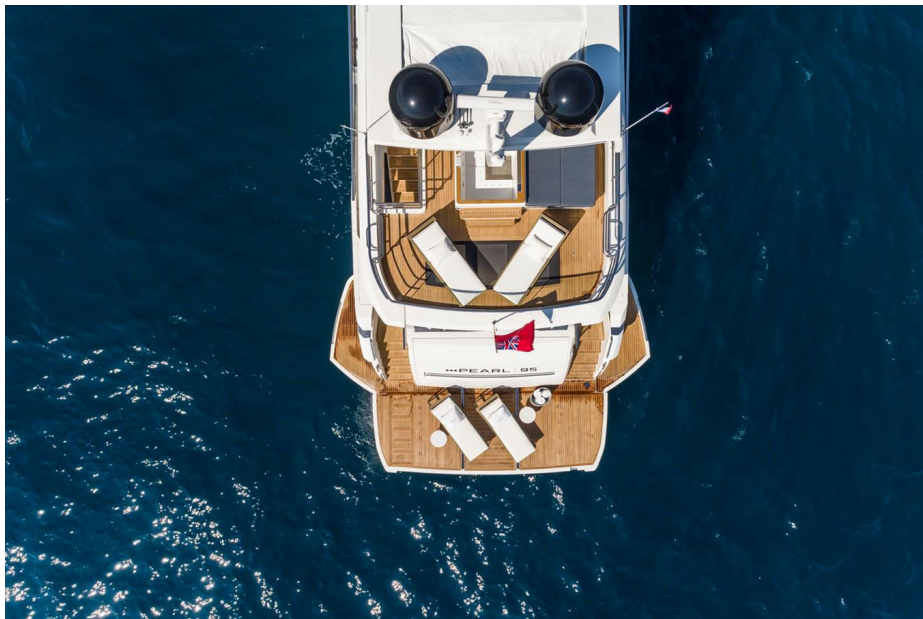
- 4 Guest Staterooms accommodate 8 Owner/Guests (including full beam owners cabin on main deck with panoramic view, a large VIP cabin aft, and 2 Guest Cabins to port and starboard with twin berths)
- Additionally, Crew accommodations for 5 crew forward (including crew mess, captain cabin with head, and 2 bunk cabins which share a head)
- Kelly Hoppen interior design
- Opening portholes throughout
- Sprung mattresses throughout
- **Beach club/garage with fold down buttresses**
- Swimming shower on beach club
- Aft deck seating with adjustable table
- Hydraulically operated bathing platform
- Stainless steel swimming ladder
- Foredeck seating and sunbathing area
- Open cell foamed external upholstery
- Opening patio doors to side decks
- Electrically operated stainless steel framed patio door
- **Hydraulic passerelle**
- Teak cockpit, flybridge and side decks
- Flybridge bar with sink, BBQ, Fridge and ice maker
- Aft Cockpit wetbar with sink, ice maker and fridge
- Glass bridge with integrated navigation and vessel control systems
- Aft deck, flybridge and screen cover set
- Kahlenberg dual trumpet horn
- Remote control spotlight
- LED lighting throughout
- Glendenning cable master
- Side Power bow and stern thrusters
- Humphries interceptor trim tabs
- Tideseal packless shaft seals
- Lewmar V8 hydraulic anchor winch
- Lewmar C6 hydraulic capstan mooring winches

- Integrated AC/DC elec control system
- Reverse cycle air-conditioning
- Twin holding tanks with pumpout system
- FM200 automated fire extinguishing system
- Central vacuum system
- Washing machine and tumble dryer by Miele
- Galley by Siematic
- LCD TVs throughout
- Pearl crockery, cutlery and towel suite

### **Upgraded Features**

- Flybridge GRP hard top with electric sunroof and lighting
- Hot Tub on flybridge with built in sunbathing area
- Retractable flybridge aft sun awning
- Rise and fall waterproof 55" TV on flybridge
- Foredeck sun awning with carbon fibre poles
- Garage wet bar
- Deck furniture package
- Underwater lights (pair)
- Custom light weight fenders
- Stainless steel anchors in lieu of standard
- Strengthen aft mooring cleats
- Seakeeper SK 35 Gyro stabilizer
- Generator upgrade to 2 x 35 kw Kohler
- Upgrade air conditioning to Tropical (ambient temperature 40 degrees)
- Upgrade guest head toilets to Headhunter system
- Headhunter sewage treatment system
- Sea Recovery XL2200 water maker
- Aventics joystick
- **ASEA frequency converter and 220v socket circuit**

- Upgrade AV system to Crestron
- FLIR M364C camera
- Axis Q35 CCTV system
- 3/4G onboard Wi-Fi
- Powered bed sliders to port and starboard guest cabin
- Electrically operated blinds throughout
- RPH blinds pack
- Fit electric drapes to salon windows and patio door
- Fit Hastens mattresses to Master and VIP cabin
- Upgrade salon TV to Samsung 65" LED TV
- Fit internal dehumidifiers to salon and guest cabins
- Captain and crew cabin TV/DVD pack
- Fit heated towel rails to guest cabin heads
- Kelly Hoppen collection interior design accessories
- Artwork













---

**95 Pearl - CATs**







---

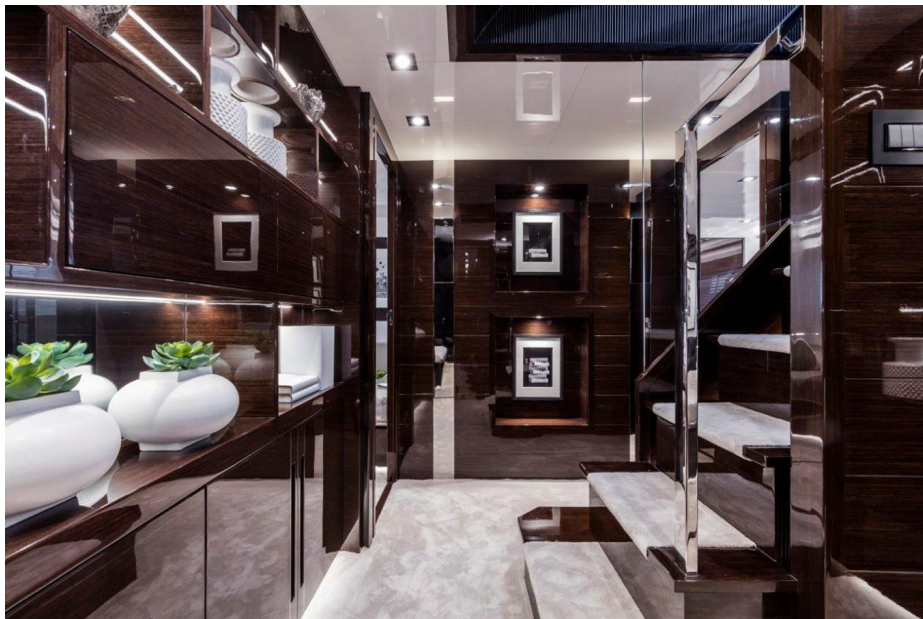
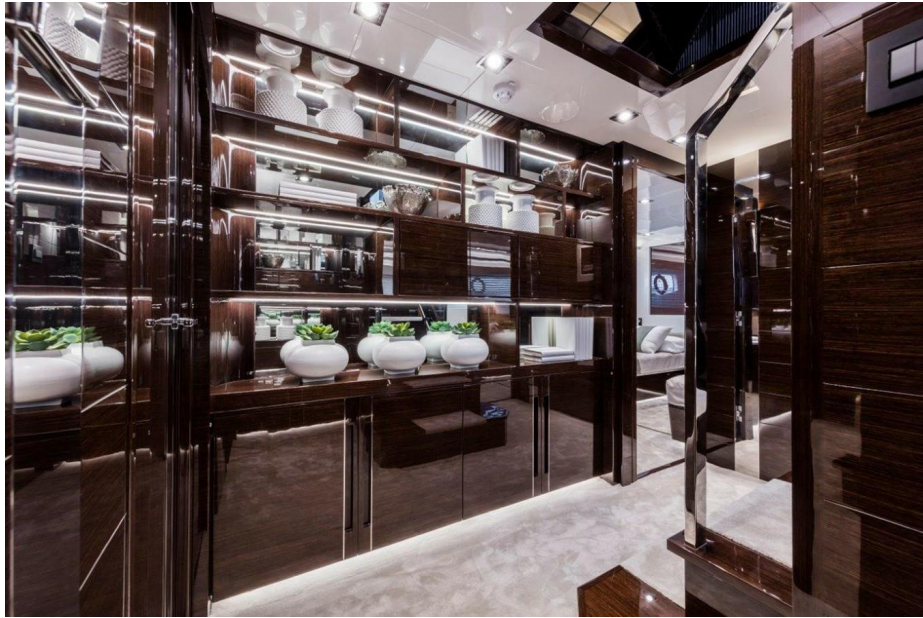
**95 Pearl - CATs**

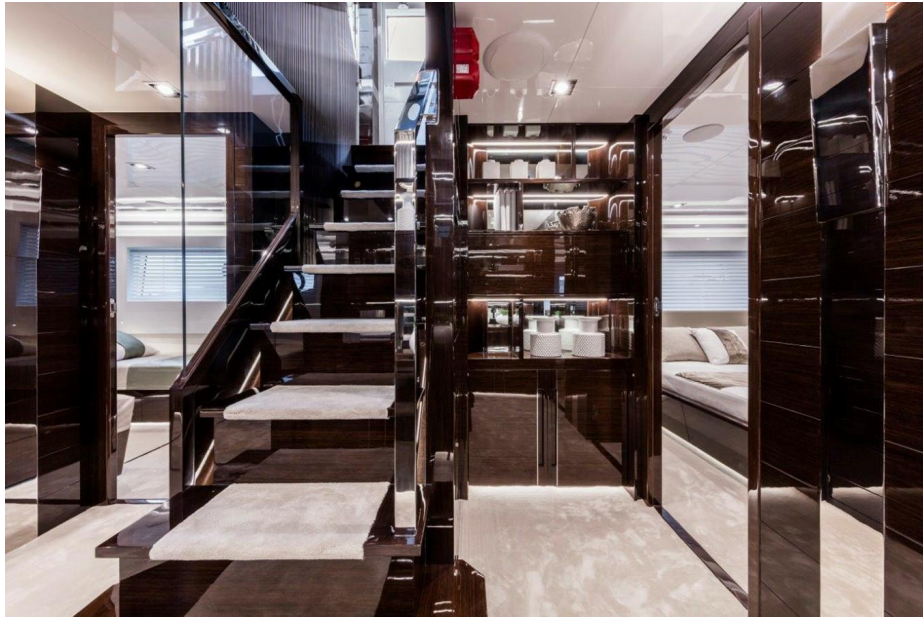


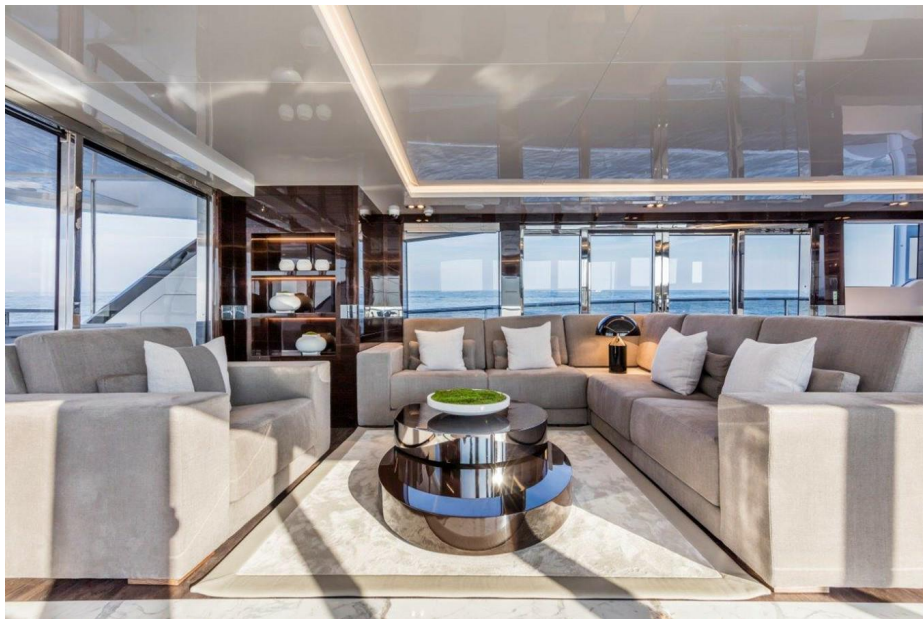


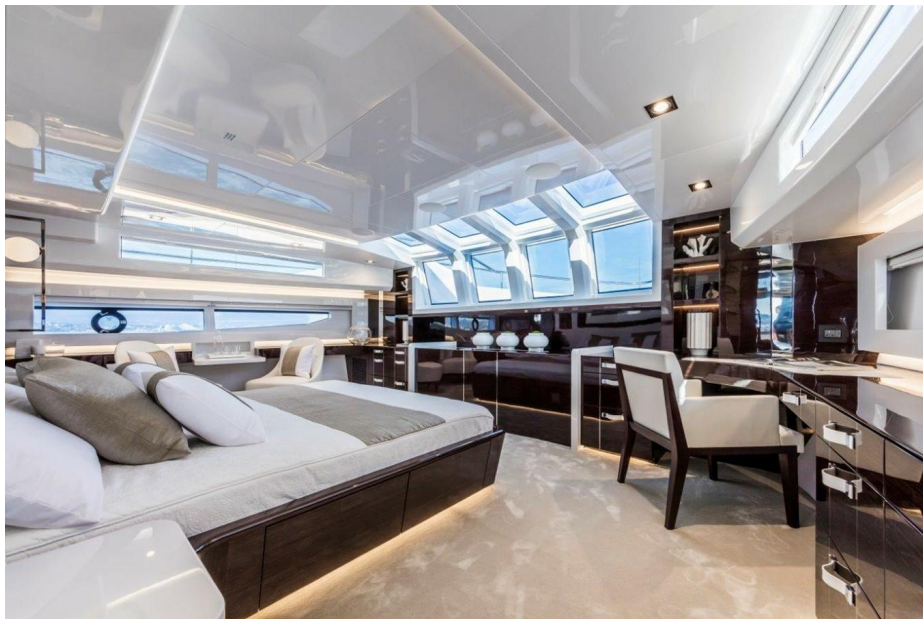


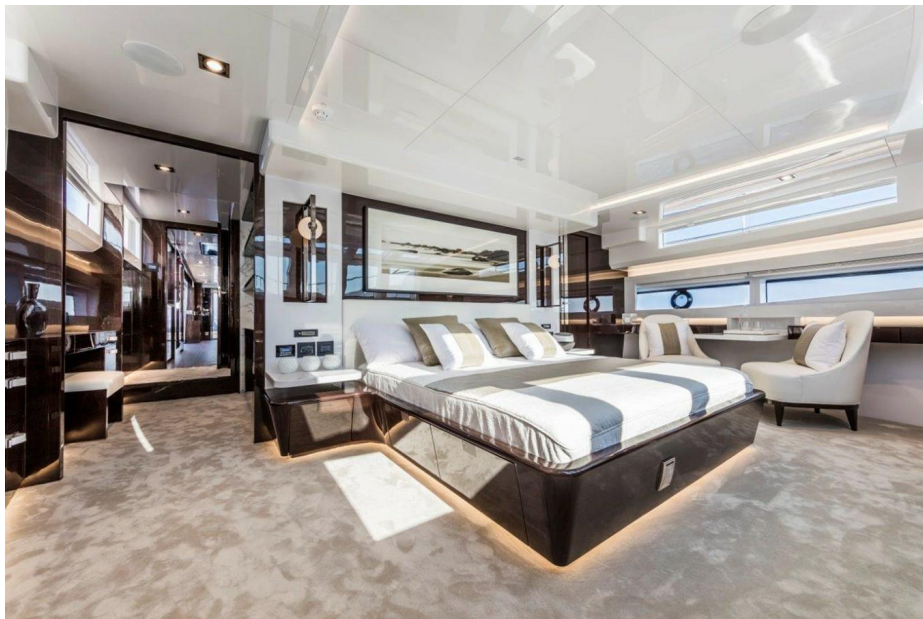


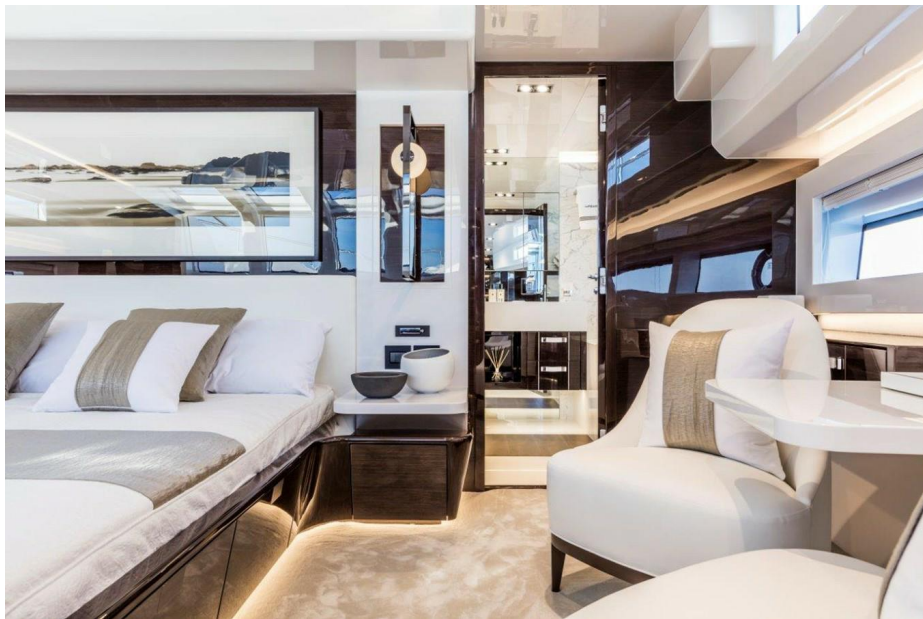








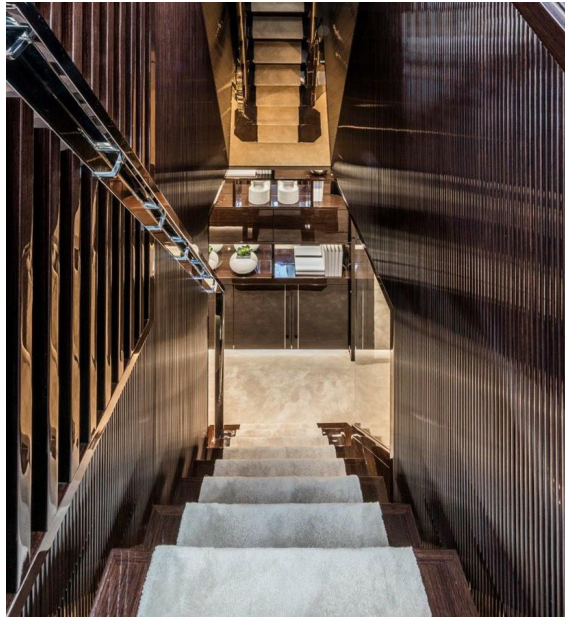


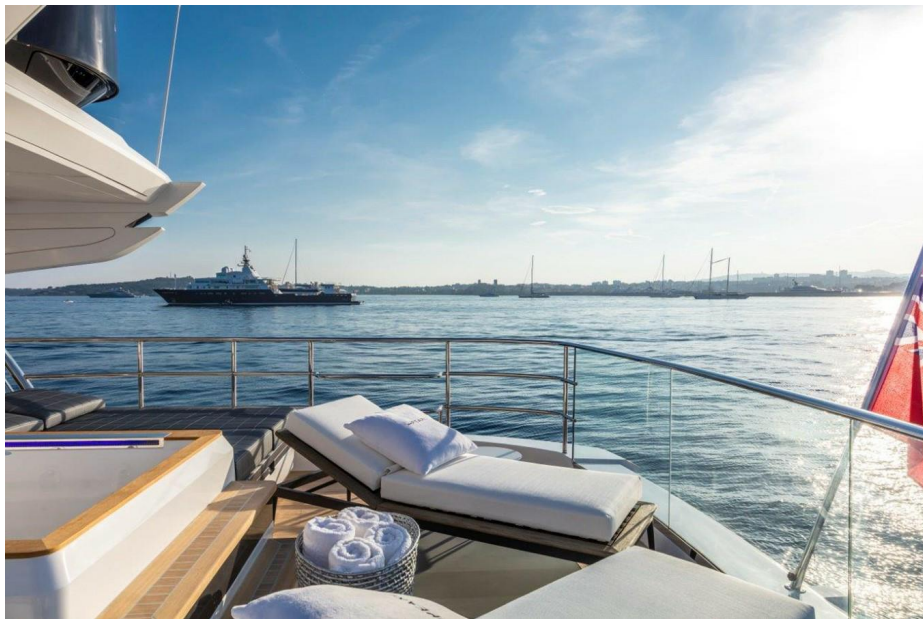








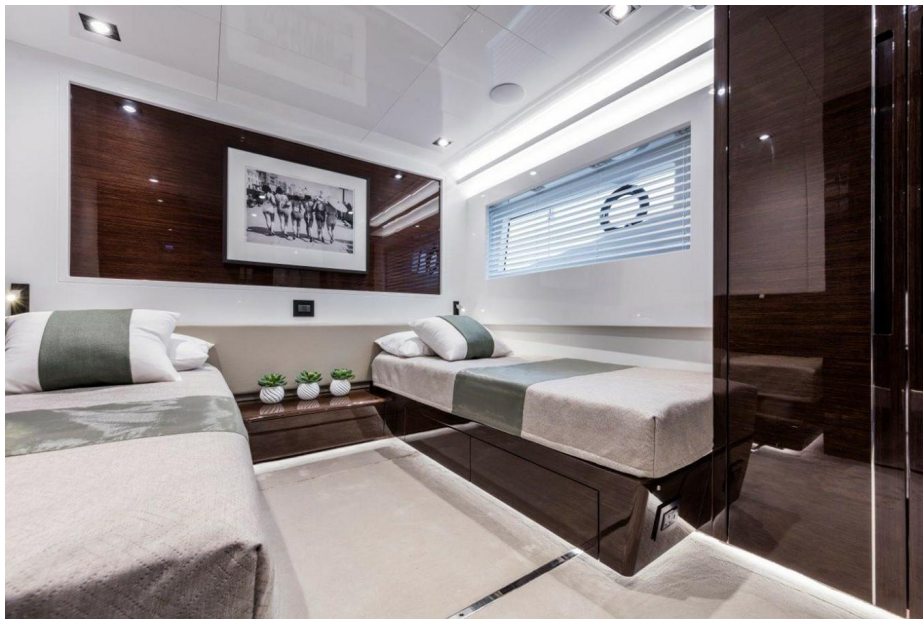




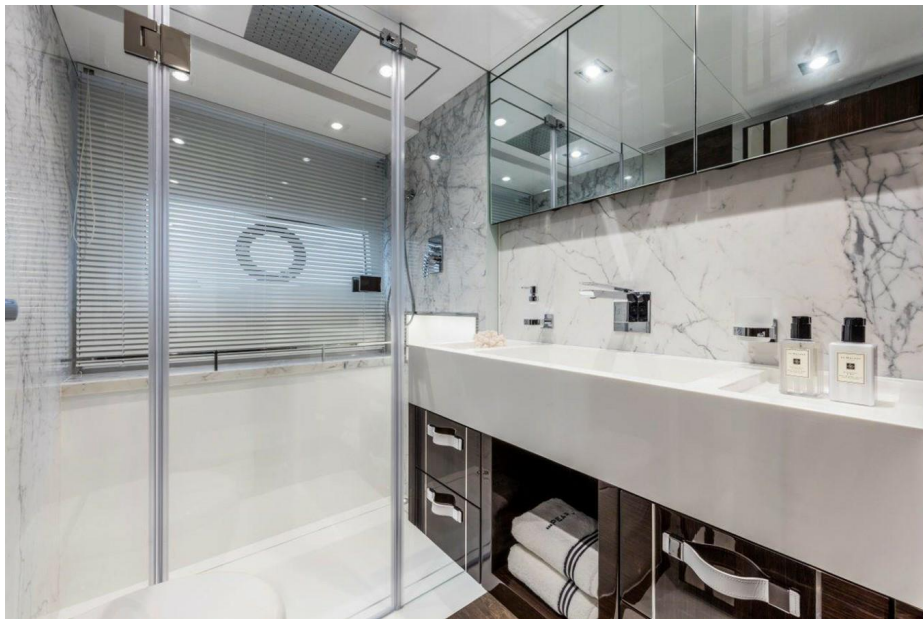
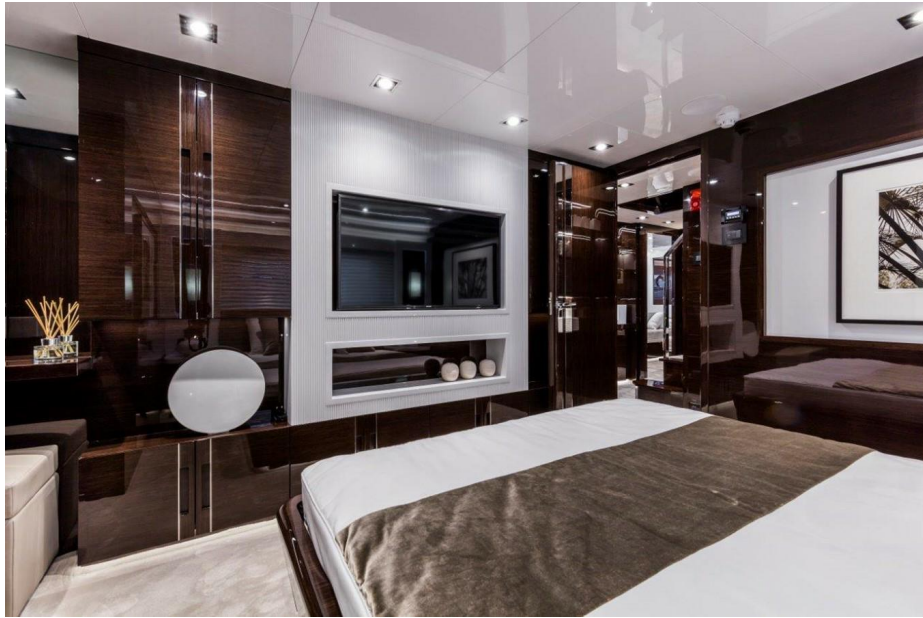




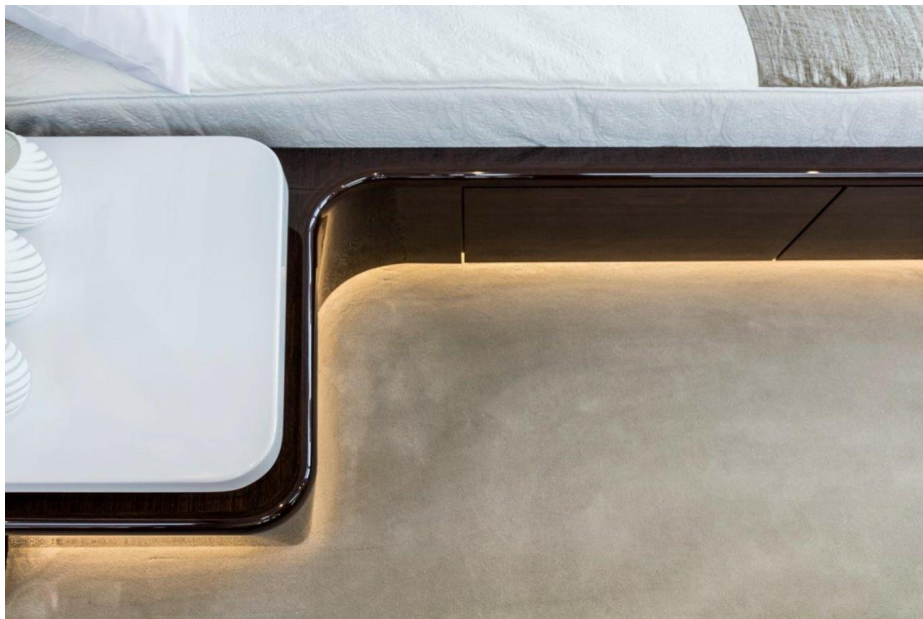
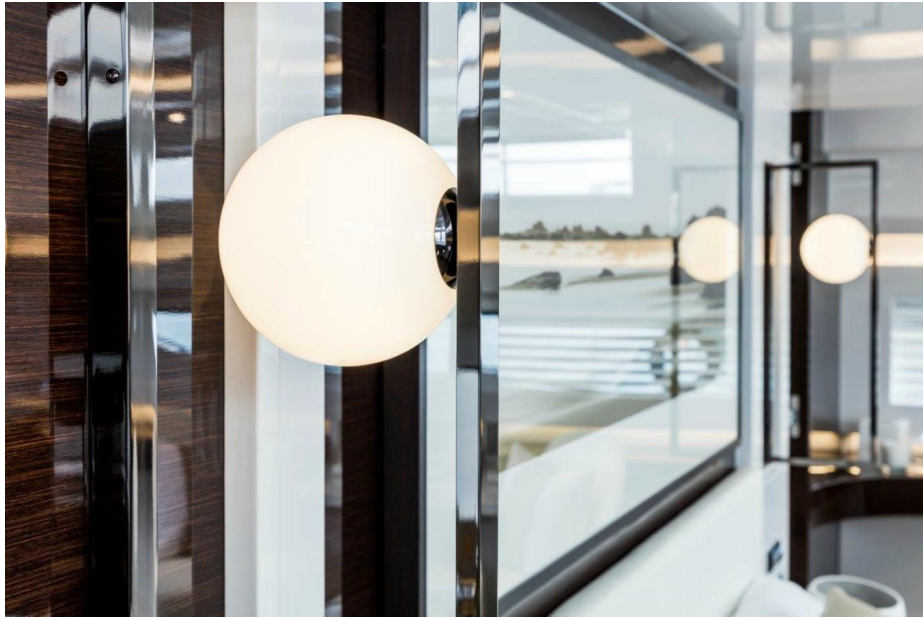


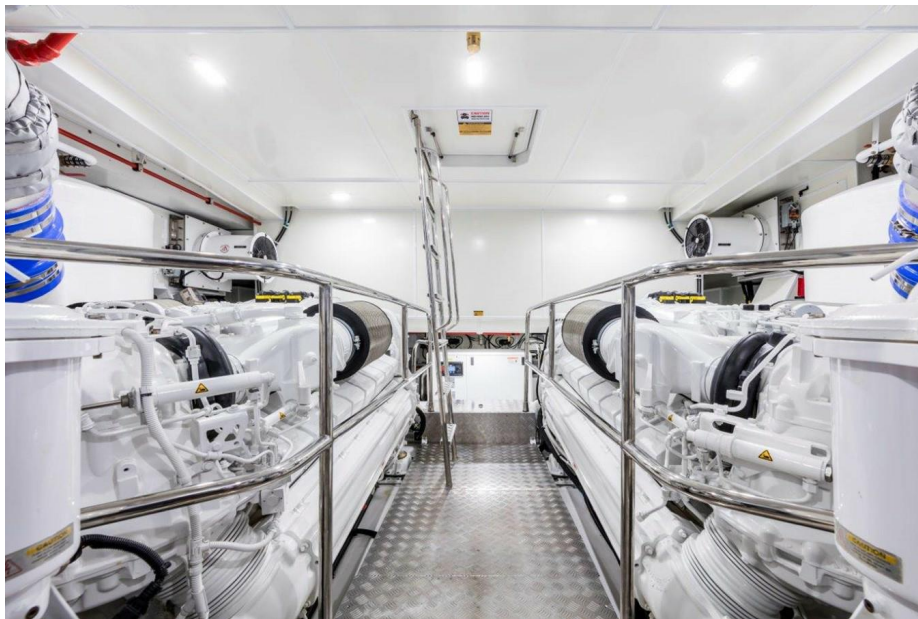










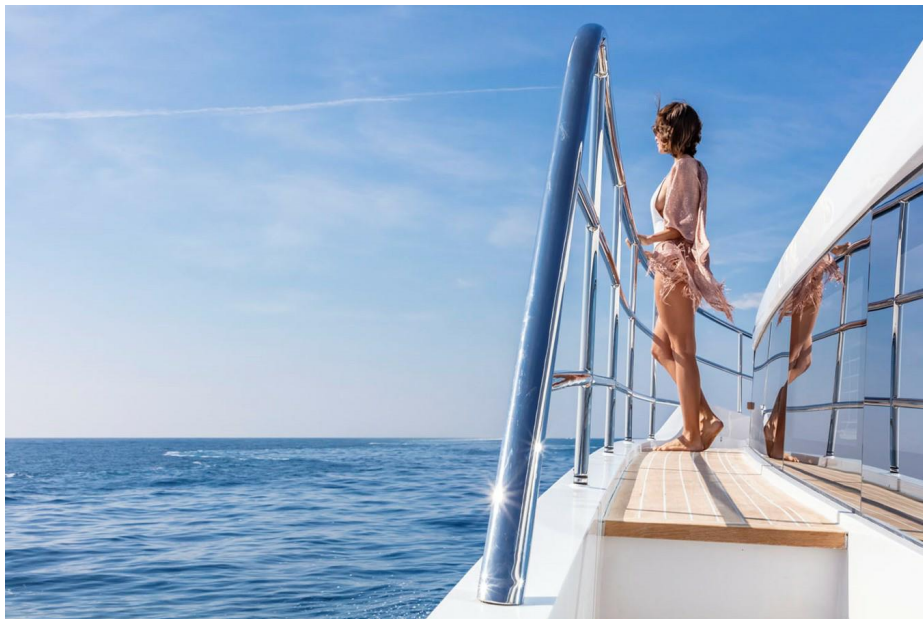






---

**95 Pearl - CATs**















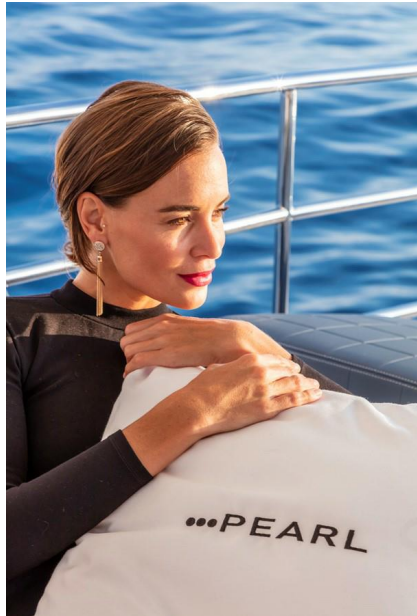




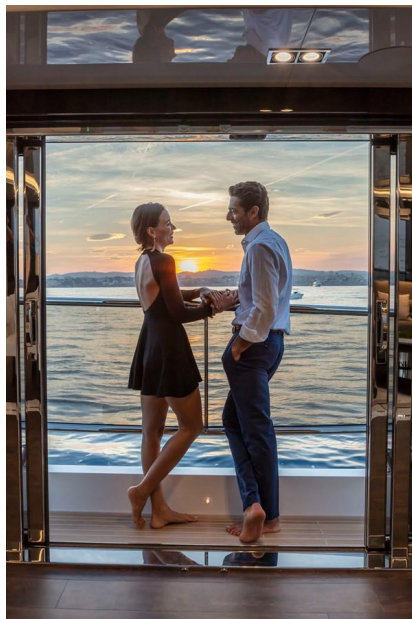


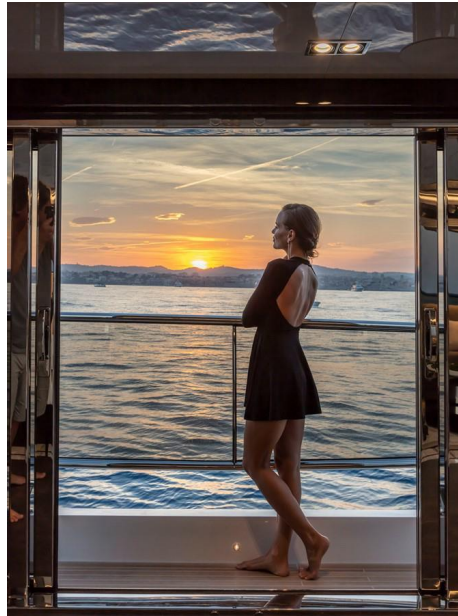












**profile new**



# Pearl 95 Dimensions\_Page\_1



A	Overall Length:	95' 10" (29.2m)
B	Waterline Length:	76' 1" (23.2m)
C	Beam:	22' 11" (6.7m)
D	Draught:	4' 6" (1.36m)
E	Draught inc. Props:	6' 9" (2.06m)
F	Air Draught:	26' 11" (7.9m)
G	Hull Length:	89' 2" (27.2m)
H	Platform Length:	9' 6" (2.9m)



<small>© 2016 DIXON YACHT DESIGN. ALL RIGHTS RESERVED. THIS DOCUMENT IS THE PROPERTY OF DIXON YACHT DESIGN. IT IS TO BE USED ONLY FOR THE PROJECT AND NOT TO BE REPRODUCED OR TRANSMITTED IN ANY FORM OR BY ANY MEANS, ELECTRONIC OR MECHANICAL, INCLUDING PHOTOCOPYING, RECORDING, OR BY ANY INFORMATION STORAGE AND RETRIEVAL SYSTEM.</small>	PROJECT	FILE	<b>DIXON</b> YACHT DESIGN
	Pearl 95	Overall Dimensions	

## P95-002 Layout

